



**Flat 19, Seaview Court Hillfield Road, Selsey**

Guide Price **£150,000**

# Flat 19

Seaview Court Hillfield Road, Chichester

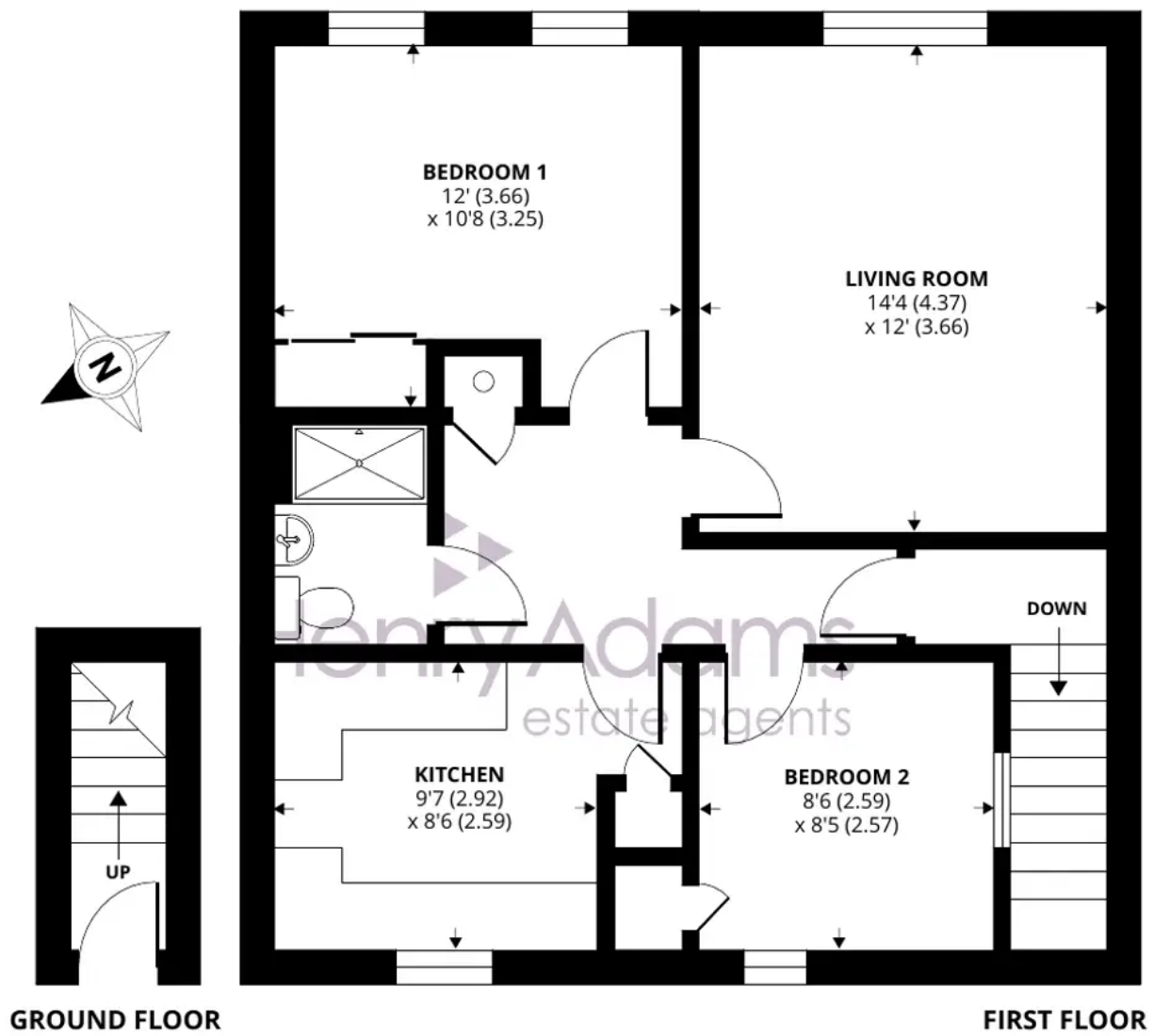
This charming first-floor retirement apartment offers a rare opportunity to settle into tranquil seaside living. Boasting two spacious double bedrooms complete with ample built-in storage space in both, residents will enjoy a comfortable and practical layout. A modern, updated kitchen with some white goods included and a storage cupboard provides convenience and functionality, while recently replaced double glazed windows flood the home with natural light throughout. Not to be missed are the stunning sea views visible from the living room, providing a constant reminder of the beauty that surrounds this coastal gem.

Externally, the property further benefits from access to communal grounds and facilities, creating a vibrant community atmosphere for residents to enjoy to their hearts content. Parking is provided in a communal car park with spaces afforded on a first come, first serve basis. Enjoy the best of seaside living in this delightful apartment, where both indoor comfort and outdoor tranquillity converge seamlessly.

Council Tax band: C, Leasehold, EPC: C

- Two Bedroom First-Floor Retirement Apartment
- Two Double Bedrooms with Built in Storage Space
- Updated Kitchen with White Goods and Storage Cupboard
- Recently Replaced Double Glazed Windows Throughout
- Communal Grounds and Facilities
- Sea Views from the Living Room





Approximate Area = 677 sq ft / 62.9 sq m  
For identification only - Not to scale





## Henry Adams - Selsey

Henry Adams LLP, 122 High Street, Selsey - PO20 0QE

01243 606789

[selsey@henryadams.co.uk](mailto:selsey@henryadams.co.uk)

[www.henryadams.co.uk/](http://www.henryadams.co.uk/)

Agents Note - Our particulars are for guidance only and are intended to give a fair overall summary of the property. They do not form part of any contract or offer, and should not be relied upon as a statement or representation of fact. Measurements, areas and distances are approximate only. Photographs may include lifestyle shots and pictures of local views. No undertaking is given as to the structural condition of the property, or any necessary consents or the operating ability or efficiency of any service, system or appliance. Please ask if you would like further information, especially before you travel to the property.