



28 Coventry Street, Stoke, Coventry CV2 4LZ

Guide Price £140,000



28 Coventry Street

Stoke, Coventry

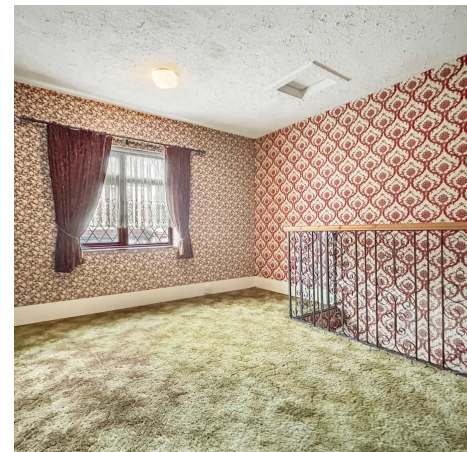
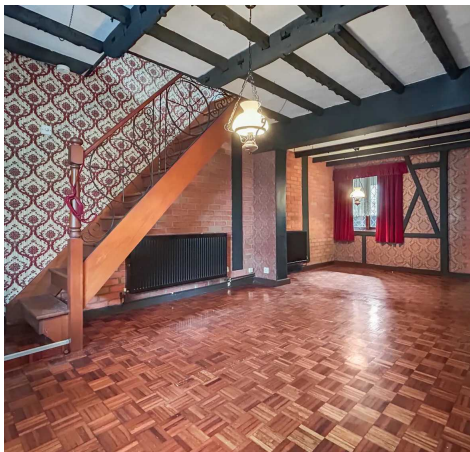
Unusually designed two bedroom end terraced property priced to reflect the need for some updating.

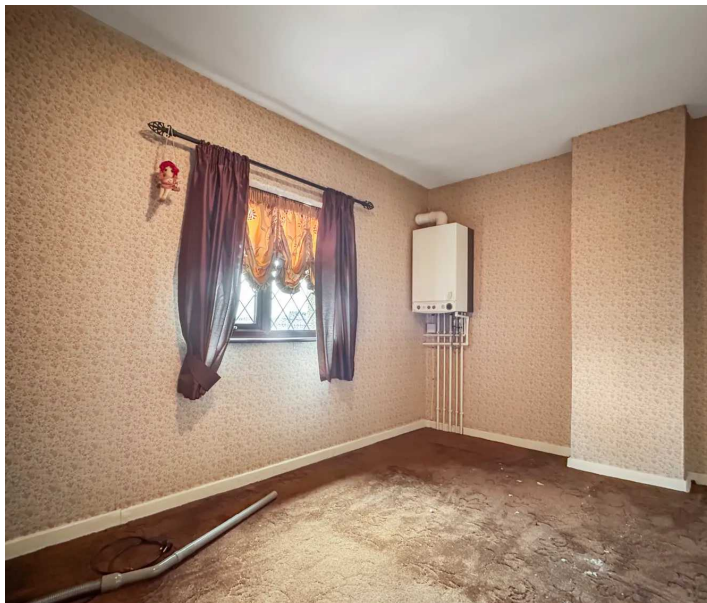
Council Tax band: A

Tenure: Freehold

EPC rating E

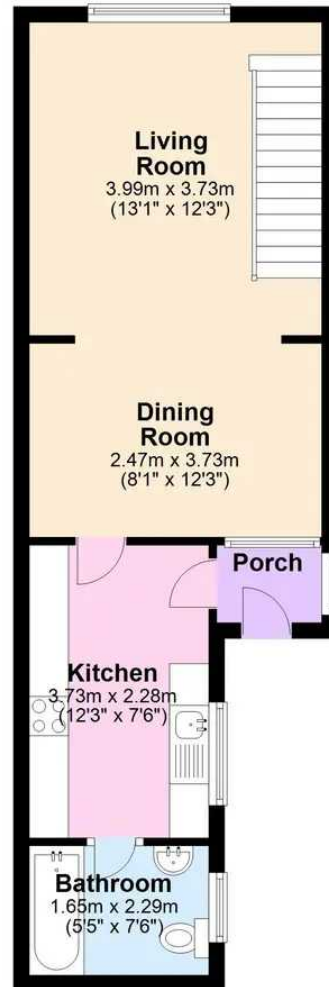
- Unusually designed end terraced property
- Living room
- Kitchen and bathroom
- Two double bedrooms
- Gardens to front and rear
- Priced to reflect the need for some upgrading





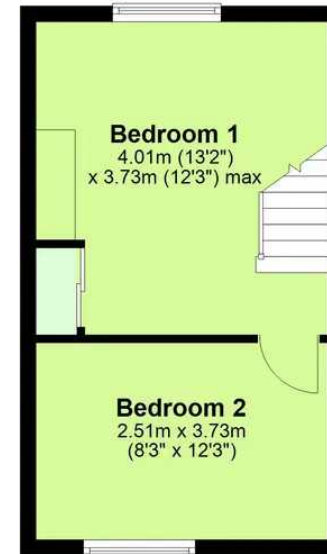
Ground Floor

Approx. 38.8 sq. metres (417.4 sq. feet)



First Floor

Approx. 24.6 sq. metres (265.3 sq. feet)



Total area: approx. 63.4 sq. metres (682.7 sq. feet)

This floor plan is for illustrative purposes only and should be used as such by any prospective purchaser. Whilst every attempt has been made to ensure the accuracy of this plan, measurements of doors, windows, rooms and other items are approximate and no responsibility is taken for any error, omission or misstatement.

Plan produced using PlanUp.

Coopers Estate Agents

Coopers, 22 New Union Street - CV1 2HN

024 7655 2841 • sales@coopersestateagents.com • www.coopersestateagents.com/

Coopers Chartered Surveyors Ltd, 22 New Union Street, Coventry, West Midlands

CV1 2HN, 024 7655 2841, sales@coopers-cov.com. Company Registration

Number: 6725089 / VAT number: 940 3555 34