



Redhill Cottage, Morchard Bishop, EX17 6RL

Guide Price £575,000

HELMORES
SINCE 1699

Redhill Cottage

Morchard Bishop

- Fantastic detached semi-rural house
- Set in a half-acre plot
- Stunning countryside views
- Beautiful gardens, garage and parking
- 4 bedrooms and 3 reception rooms
- Plenty of character
- Walking distance from village

Morchard Bishop is one of the larger Mid Devon villages and boasts a great pub, shop and a thriving community. There's a regular bus service too plus nearby train stops on the Tarka line so it's a well connected village with a truly Devon feel.

This property can be found just outside the village, located on a quiet single track country lane which is walkable to the village and amenities. It's not been on the market in 30 years so it's a great opportunity to make a wonderful home for a new buyer. There's plenty of room inside and out as it sits in a half acre plot which is private and the gardens are full of beautiful plants and trees, plus it backs onto open countryside so there are views in most directions from many windows.





Internally, the house has a spacious layout, a cosy sitting room with inglenook fireplace is ideal for those colder winter nights whilst the light garden room with doors out onto the garden provides a wonderful flexible space for entertaining or hobbies. It would make an ideal studio or home office too. Central in the house is a dining room, again with a large fireplace and the kitchen is well fitted and has the benefit of a utility room which also acts as a rear porch, as is often the case, this door to the utility tends to be the day to day entrance. Upstairs are 4 bedrooms and a family bathroom. Although some may prefer to update the décor and fittings, the house has been very well maintained both inside and out. There's oil fired central heating and double glazing.

Outside, the front garden gives a buffer to the country lane and leads to the official front door. To the side is a small (occasional) gated parking space and a pathway to the side leads to the main gardens, in total the plot is half an acre. It's a wonderful space, well planted and with various areas of lawn, pond, utility space and cleverly zoned to add to the feeling of space and enjoyment. There's a couple of sheds and a greenhouse too. A lane runs between Redhill and the lower neighbour and this provides vehicle access for both properties in order to reach their respective parking/garages.



Please see the floorplan for room sizes.

Current Council Tax: F (Mid Devon 2022/23 - £3084.06)

Utilities: Mains electric, water, telephone and broadband, plus modern oil tank

Fastest broadband speed within this postcode: Up to 63Mbps (Money Supermarket)

Drainage: Private drainage (septic tank)

Heating: Oil-fired central heating

Listed: No

Tenure: Freehold

DIRECTIONS : From Crediton High Street, head west towards Copplestone. Go through Copplestone, bearing right at the end of the traffic lights and continue on the A377. After approx. 1.9 miles, turn right by the Devonshire Dumpling pub. Continue for approx. 2.3 miles and enter Morchard Bishop. At the fork, bear left down Fore Street and head out of the village. After approx. 500m, take a right turn and Redhill Cottage will be found on the right as you rise up the hill.

what3words: ///beak.apron.belonging



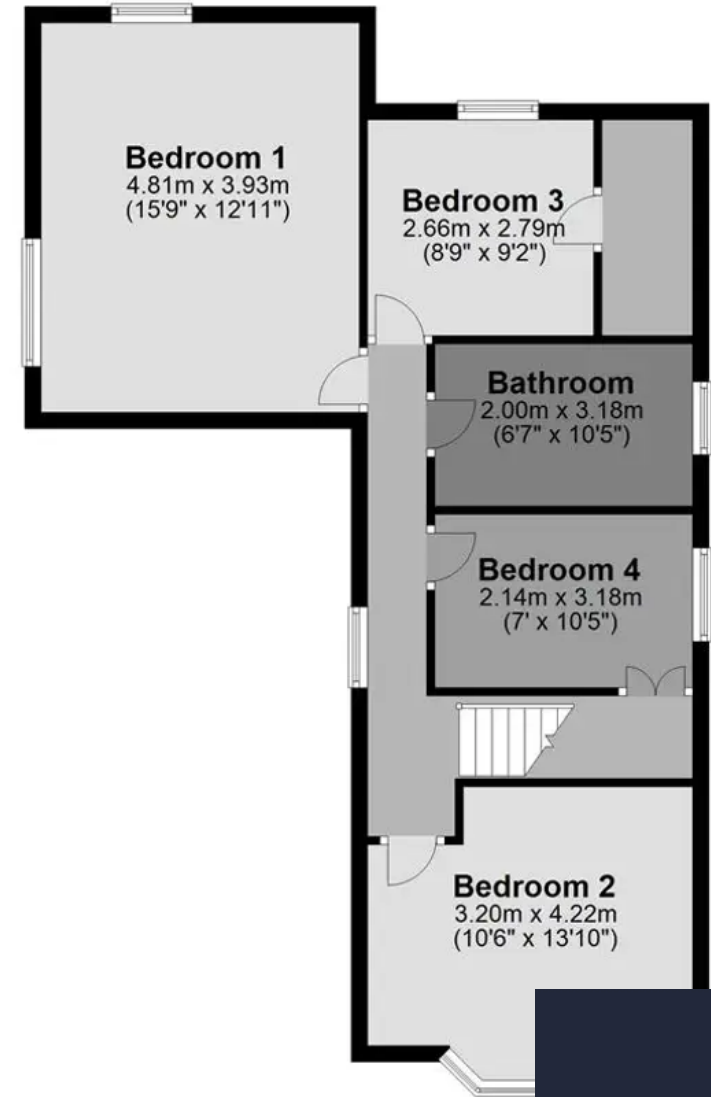
Ground Floor

Approx. 104.4 sq. metres (1123.5 sq. feet)



First Floor

Approx. 65.3 sq. metres (703.3 sq. feet)



Total area: approx. 169.7 sq. metres (1826.8 sq. feet)

HELMORES
SINCE 1699



Helmores

Helmores, 111-112 High Street - EX17 3LF

01363 777 999

property@helmores.com

helmores.com/

HELMORES
SINCE 1699

These particulars are intended to give a fair and reliable description of the property but no responsibility for any inaccuracy or error can be accepted and do not constitute an offer or contract. We have not tested any services or appliances (including central heating if fitted) referred to in these particulars and the purchasers are advised to satisfy themselves as to the working order and condition. If a property is unoccupied at any time there may be reconnection charges for any switched off/disconnected or drained services or appliances - All measurements are approximate.