

LET



Spilsby Close, Cantley
£850 pcm


MARTIN & CO



Spilsby Close, Cantley

Semi-Detached House,
3 bedroom, 1 bathroom

£850 pcm

Date available: 8th April 2024

Deposit: £980.76

Unfurnished

Council Tax band:

- Modern Kitchen.
- Family Bathroom.
- Conservatory.
- Detached Garage,
- Three Bedrooms.
- Quiet Cul-De-Sac Location.
- Semi-Detached.



Martin&Co are pleased to offer this three bedroom semi-detached home which is situated on a quiet cul-de-sac in the highly sought after area of Cantley. Briefly comprising of a Kitchen/Diner, Living Room, Conservatory on the Ground Floor. Two Double Bedrooms, a Single Bedroom and Family Bathroom on the First Floor. Also benefits from a Rear Garden, Off Road Parking and Detached Garage. Call now to arrange a viewing!

KITCHEN/DINER With a range of wood effect wall and base units complimented with black worktops. Also benefits from an integrated gas oven, hob and extractor fan. There is also plumbing for a washing machine.

CONSERVATORY Leading from the kitchen, a spacious conservatory with patio doors leading to the rear garden. Perfect for entertaining!

LIVING ROOM A light and bright front facing Living Room.

BEDROOM A double bedroom situated on the first floor.

BEDROOM A second double bedroom situated on the first floor.

BEDROOM A single bedroom situated on the first floor.

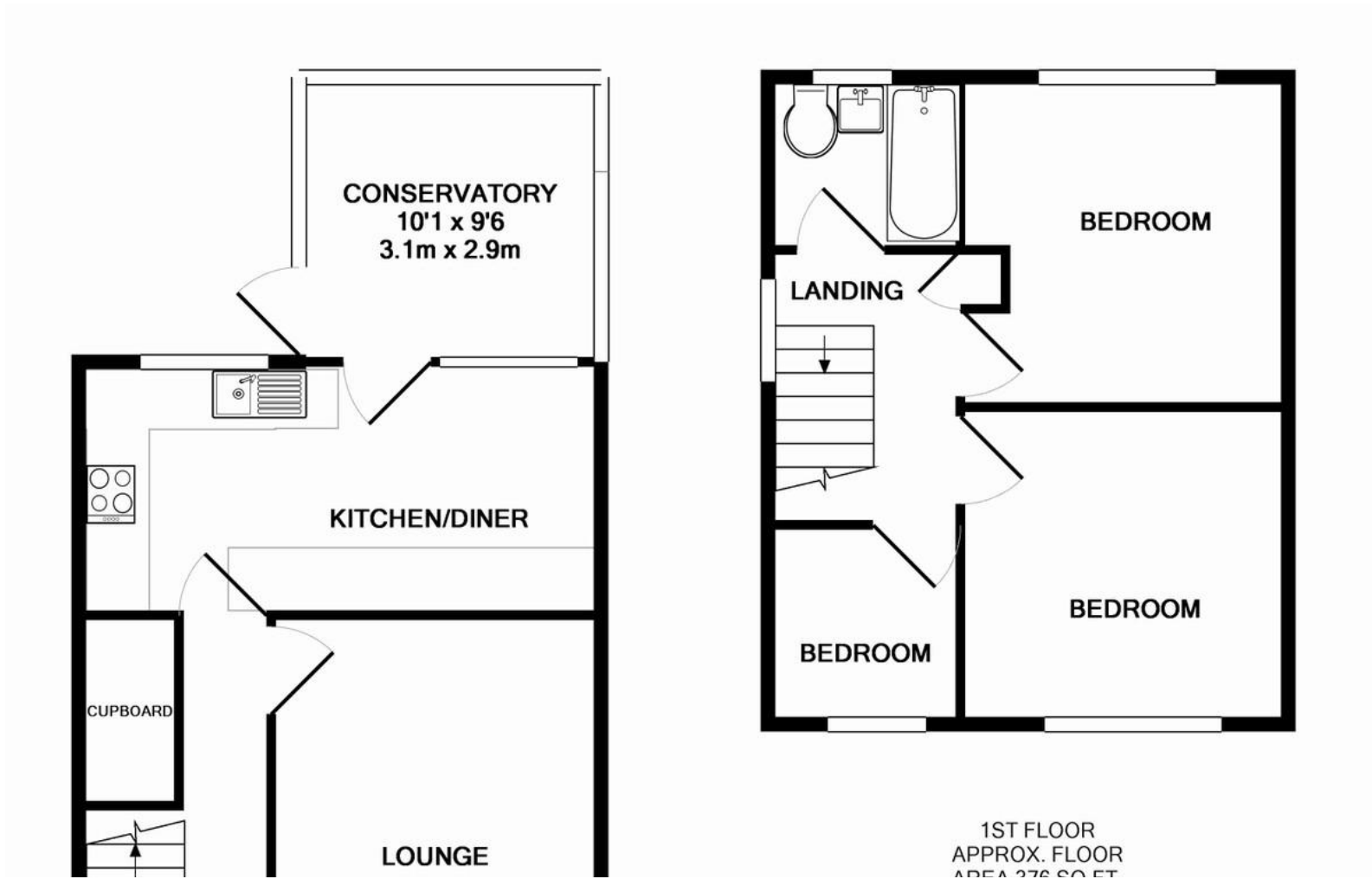
BATHROOM A family bathroom fitted with white three piece suite and over bath shower.





%epcGraph_c_1_544%





Martin & Co Doncaster

38 Hall Gate • Doncaster • DN1 3NR
 T: 01302 343 494 • E: doncaster@martinco.com

01302 343 494

<http://www.martinco.com>



Accuracy: References to the Tenure of a Property are based on information supplied by the Seller. The Agent has not had sight of the title documents. A Buyer is advised to obtain verification from their Solicitor. Items shown in photographs including but not limited to carpets, fixtures and fittings are not included unless specifically mentioned within the sales particulars. They may however be available by separate negotiation. Buyers must check the availability of any property and make an appointment to view before embarking on any journey to see a property. No person in the employment of the agent has any authority to make any representation about the property, and accordingly any information given is entirely without responsibility on the part of the agents, sellers(s) or lessors(s). Any property particulars are not an offer or contract, nor form part of one. **Sonic / Laser Tape:** Measurements taken using a sonic / laser tape measure may be subject to a small margin of error. **All Measurements:** All Measurements are Approximate. **Services Not tested:** The Agent has not tested any apparatus, equipment, fixtures and fittings or services and so cannot verify that they are in working order or fit for the purpose. A Buyer is advised to obtain verification from their Solicitor or Surveyor.