

# THE IRWELL WHITEFIELD BROOK



2 | 

1 | 

1 | 

## KEY FEATURES:

- Two double bedrooms
- Separate kitchen
- Living/dining area
- Integrated kitchen appliances
- Patio doors to rear garden
- Downstairs WC

## WHITEFIELD DRIVE, KIRKBY, LIVERPOOL L32 4TD

A range of bespoke two, three and four-bedroom homes.



### The Irwell

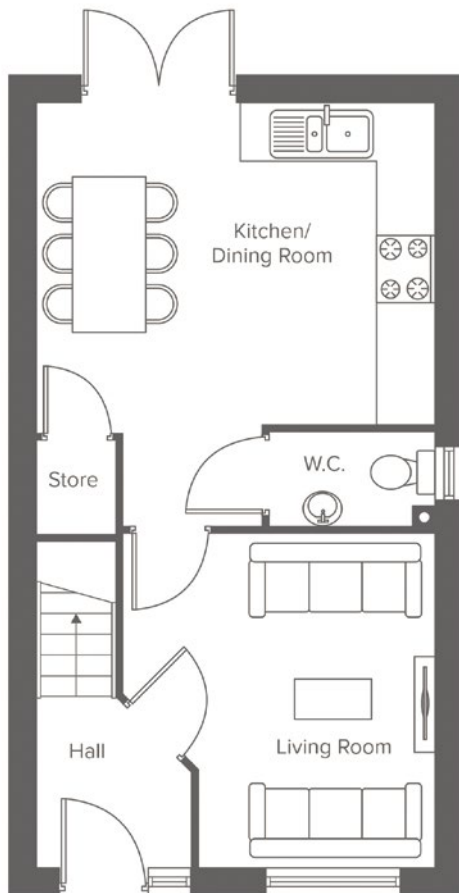
Shared Ownership plots

118, 120, 122, 155, 160,  
162, 164, 166, 168

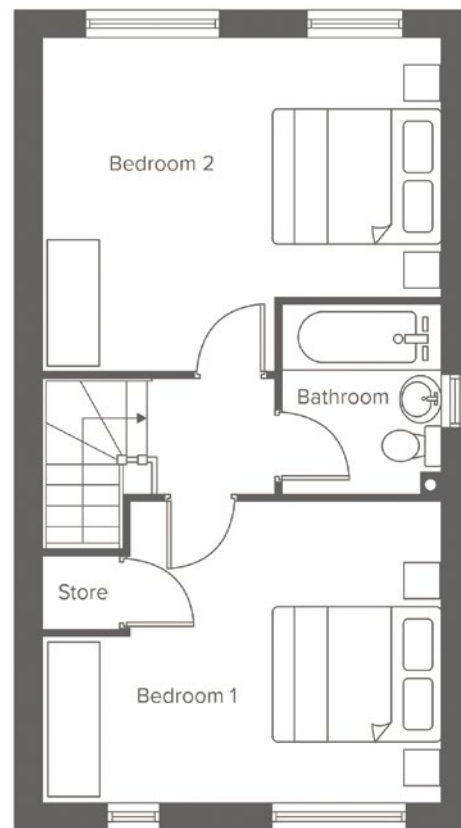
Rent to Buy plots

33, 35, 37, 126, 153, 235,  
239, 243

# THE IRWELL WHITEFIELD BROOK




| Ground Floor    | Metric    | Imperial      |
|-----------------|-----------|---------------|
| Kitchen         | 3.4 x 4.3 | 11'1" x 14'1" |
| Living / Dining | 3.6 x 3.3 | 11'9" x 10'9" |
| W.C.            | 1.0 x 1.8 | 3'3" x 5'10"  |





| First Floor | Metric    | Imperial      |
|-------------|-----------|---------------|
| Bedroom 1   | 3.2 x 4.3 | 10'5" x 14'1" |
| Bedroom 2   | 3.5 x 4.3 | 11'5" x 14'1" |
| Bathroom    | 2.0 x 1.7 | 6'6" x 5'6"   |


CONTACT OUR TEAM

 0151 601 8934

 [yourhousinggroup.co.uk](http://yourhousinggroup.co.uk)

 @yourhousinggroup

 @Your\_Housing

 @yourhousing