

# TROY COURT

KENSINGTON W8







## TROY COURT

KENSINGTON W8

A rare opportunity to purchase a south west facing, split level, penthouse apartment (120.6 sq m/1,298 sq ft approx.) in this highly sought after building in the heart of Kensington. Arranged over the sixth and seventh floors and boasting enviable views across Kensington and the new Design Museum, this superb property offers the exciting opportunity for further modernisation.

Furthermore this unique property is flooded with natural light and boasts two balconies, a terrace, lift access and excellent portorage. Troy Court is prestigiously situated along Kensington High Street, moments to the numerous shopping, transport and local amenities, and the green spaces of Holland Park making the property an ideal city home, pied a terre or long term investment.





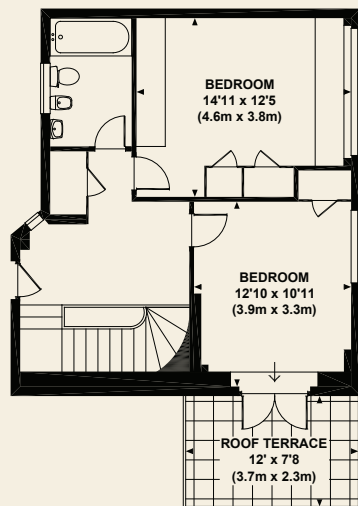
# TROY COURT

KENSINGTON W8

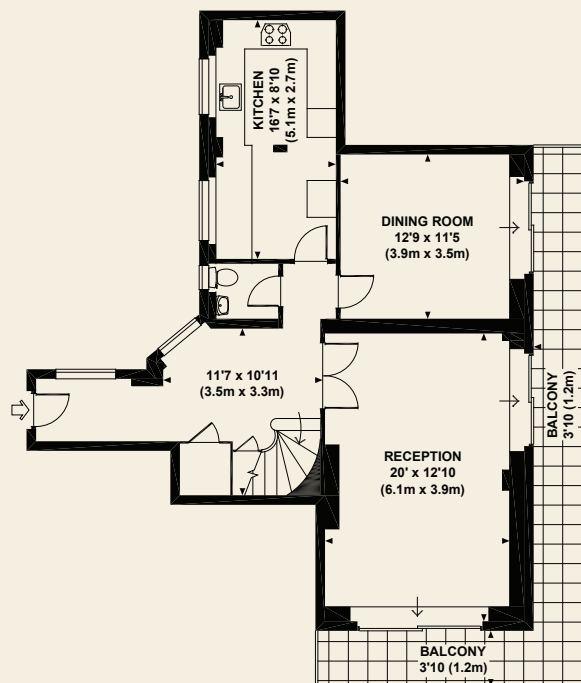
MISREPRESENTATION ACT 1967. THIS BROCHURE AND THE DESCRIPTIONS AND MEASUREMENTS HEREIN DO NOT CONSTITUTE REPRESENTATION AND WHILST EVERY EFFORT HAS BEEN MADE TO ENSURE ACCURACY, THIS CANNOT BE GUARANTEED.

**PRICE:** £2,150,000  
**TENURE:** LEASEHOLD  
(179 YEARS REMAINING APPROX.)  
**SERVICE CHARGES:** £9,180 PA APPROX.  
**GROSS INTERNAL AREA:** 120.6 SQ M / 1,298 SQ FT APPROX.  
**LOCAL AUTHORITY:** THE ROYAL BOROUGH OF KENSINGTON & CHELSEA  
**ENERGY RATING:** E

2 BEDROOMS, BATHROOM, RECEPTION ROOM,  
DINING ROOM, KITCHEN, GUEST CLOAKROOM,  
2 BALCONIES, LIFT, PORTER.



SEVENTH FLOOR



SIXTH FLOOR

KENSINGTON

T 020 7795 4288

10 HORNTON STREET LONDON W8 4NW

E KENSINGTON@BECTIVE.CO.UK

WWW.BECTIVE.CO.UK

**BECTIVE**  
-LESLIE MARSH-