

# THE GATLEY WHITEFIELD BROOK



3 | 

1 | 

1 | 

## KEY FEATURES:

- Two double bedrooms and one single bedroom
- Spacious lounge
- Patio doors to rear garden
- Driveway parking
- Integrated kitchen appliances

## WHITEFIELD DRIVE, KIRKBY, LIVERPOOL L32 4TD

A range of bespoke two, three and four-bedroom homes.



### The Gatley

Shared Ownership plots

117, 119, 121, 154, 156,  
159, 161, 163, 165, 167

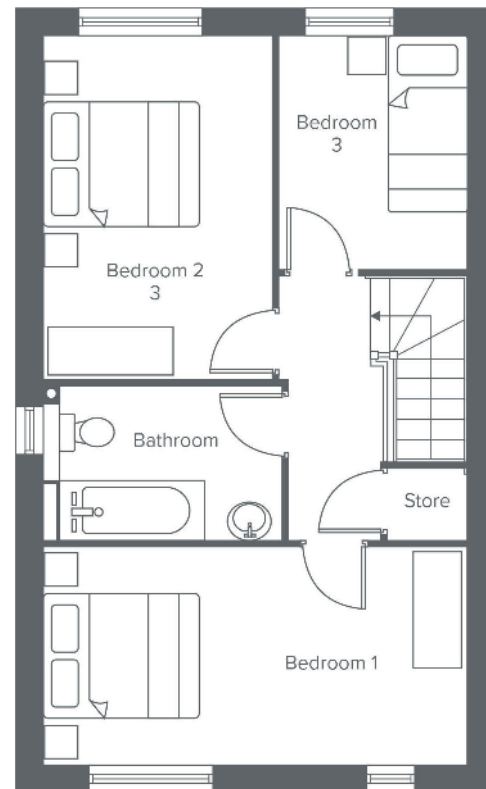
Rent to Buy plots

38

# THE GATLEY WHITEFIELD BROOK





Ground Floor	Metric	Imperial
Kitchen / Dining	3.0 x 4.7	9'10" x 15'5"
Living Room	4.0 x 2.9	13'1" x 9'6"
W.C.	1.0 x 1.8	3'3" x 5'10"





First Floor	Metric	Imperial
Bedroom 1	2.5 x 4.7	8'2" x 15'5"
Bedroom 2	3.9 x 2.5	12'9" x 8'2"
Bedroom 3	2.6 x 2.1	8'6" x 6'10"
Bathroom	1.7 x 2.6	5'6" x 8'6"


CONTACT OUR TEAM

 0151 601 8934

 [yourhousinggroup.co.uk](http://yourhousinggroup.co.uk)

 @yourhousinggroup

 @Your\_Housing

 @yourhousing