



Ladywell Point, Pilgrims Way

Salford



£160,000

Ladywell Point

Salford

Just a stone's throw from Ladywell tram stop is this **SPACIOUS, THREE BEDROOM APARTMENT!** Just a short walk from Salford Royal Hospital, amenities and transport links throughout Manchester, this would be great for professionals, first time buyers and investors!

Council Tax band: B

Tenure: Leasehold

- Modern three bedroom apartment
- Located just a stone's throw from Ladywell tram stop, with direct access into Salford Quays, Media City and Manchester City Centre
- Situated just a short walk from Salford Royal Hospital
- Open plan kitchen, living and dining area with plenty of natural light
- Three double bedrooms
- Ensuite shower room to the main bedroom
- Benefits from a utility cupboard
- Modern three piece bathroom
- Allocated parking space
- Viewing is highly recommended!



HILLS



Entrance Hallway

Complete with two ceiling light points, electric radiator and carpet flooring.

Living / Kitchen / Dining Room

16' 10" x 14' 10" (5.13m x 4.53m)

Featuring complementary fitted units with integral hob and oven. Complete with three ceiling light points, double glazed windows and electric radiator. Fitted with cushioned and carpet flooring.

Utility Cupboard

Complete with a ceiling light point and cushioned flooring.

Bedroom One

12' 0" x 10' 6" (3.66m x 3.19m)

Complete with a ceiling light point, double glazed window and electric radiator. Fitted with carpet flooring.

Bedroom Two

14' 11" x 8' 5" (4.54m x 2.56m)

Complete with a ceiling light point, double glazed window and electric radiator. Fitted with carpet flooring.

Bedroom Three

11' 5" x 8' 7" (3.47m x 2.61m)

Complete with a ceiling light point, double glazed window and electric radiator. Fitted with carpet flooring.

Bathroom

7' 9" x 5' 6" (2.36m x 1.68m)

Featuring a three-piece suite including a bath with shower over, hand wash basin and W.C. Complete with a ceiling light point, part tiles walls and cushioned flooring.

En-suite

7' 9" x 4' 3" (2.36m x 1.30m)

Featuring a shower cubicle, hand wash basin and W.C. Complete with a ceiling light point, part tiled walls and cushioned flooring.

External

Lift access.



Entrance Hallway

Complete with two ceiling light points, electric radiator and carpet flooring.

Living / Kitchen / Dining Room

16' 10" x 14' 10" (5.13m x 4.53m)

Featuring complementary fitted units with integral hob and oven. Complete with three ceiling light points, double glazed windows and electric radiator. Fitted with cushioned and carpet flooring.

Utility Cupboard

Complete with a ceiling light point and cushioned flooring.

Bedroom One

12' 0" x 10' 6" (3.66m x 3.19m)

Complete with a ceiling light point, double glazed window and electric radiator. Fitted with carpet flooring.

Bedroom Two

14' 11" x 8' 5" (4.54m x 2.56m)

Complete with a ceiling light point, double glazed window and electric radiator. Fitted with carpet flooring.

Bedroom Three

11' 5" x 8' 7" (3.47m x 2.61m)

Complete with a ceiling light point, double glazed window and electric radiator. Fitted with carpet flooring.

Bathroom

7' 9" x 5' 6" (2.36m x 1.68m)

Featuring a three-piece suite including a bath with shower over, hand wash basin and W.C. Complete with a ceiling light point, part tiles walls and cushioned flooring.

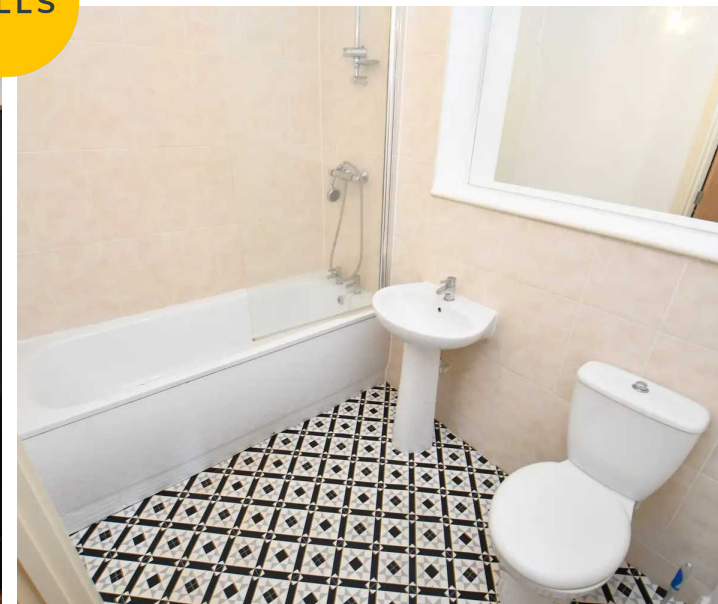
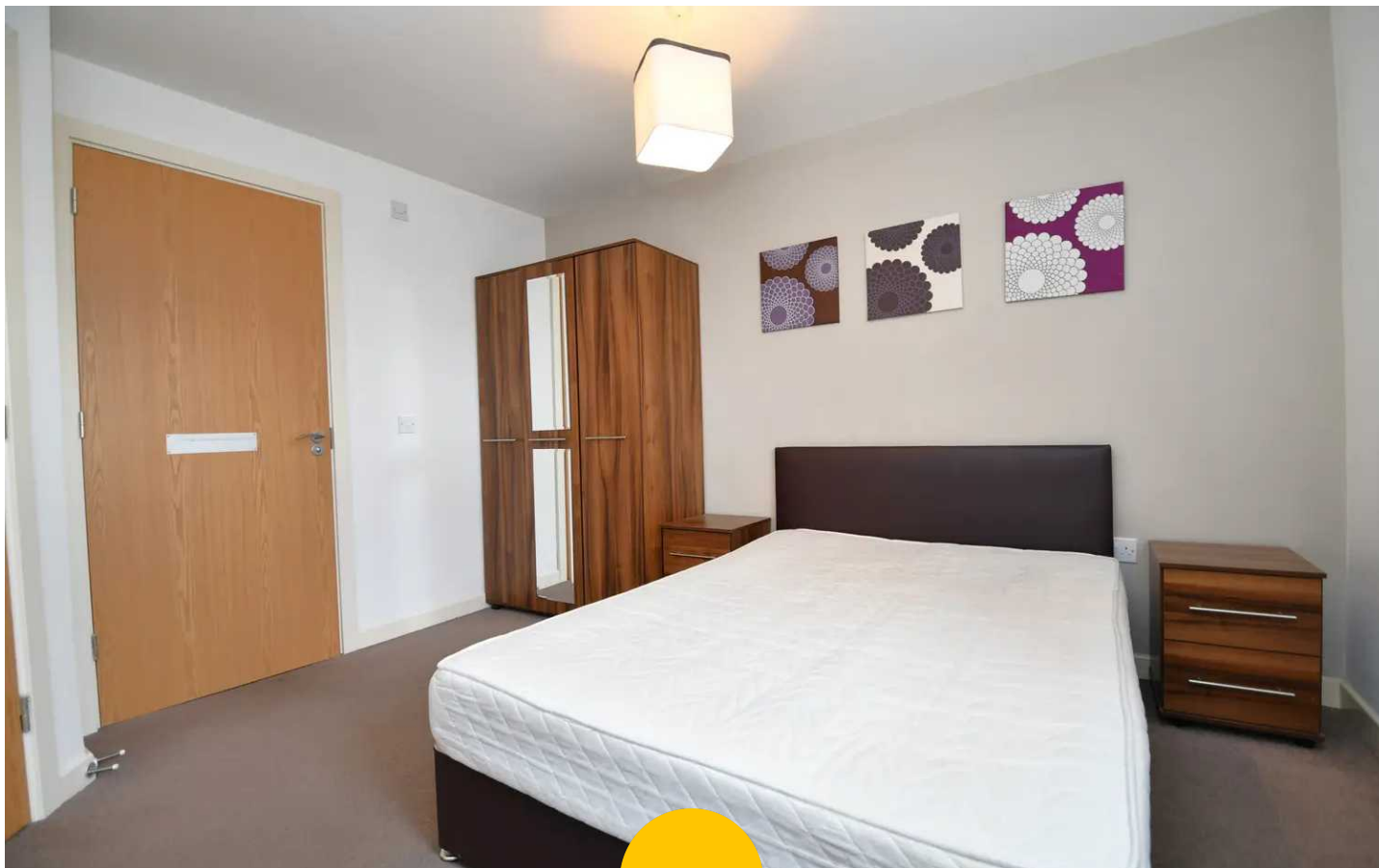
En-suite

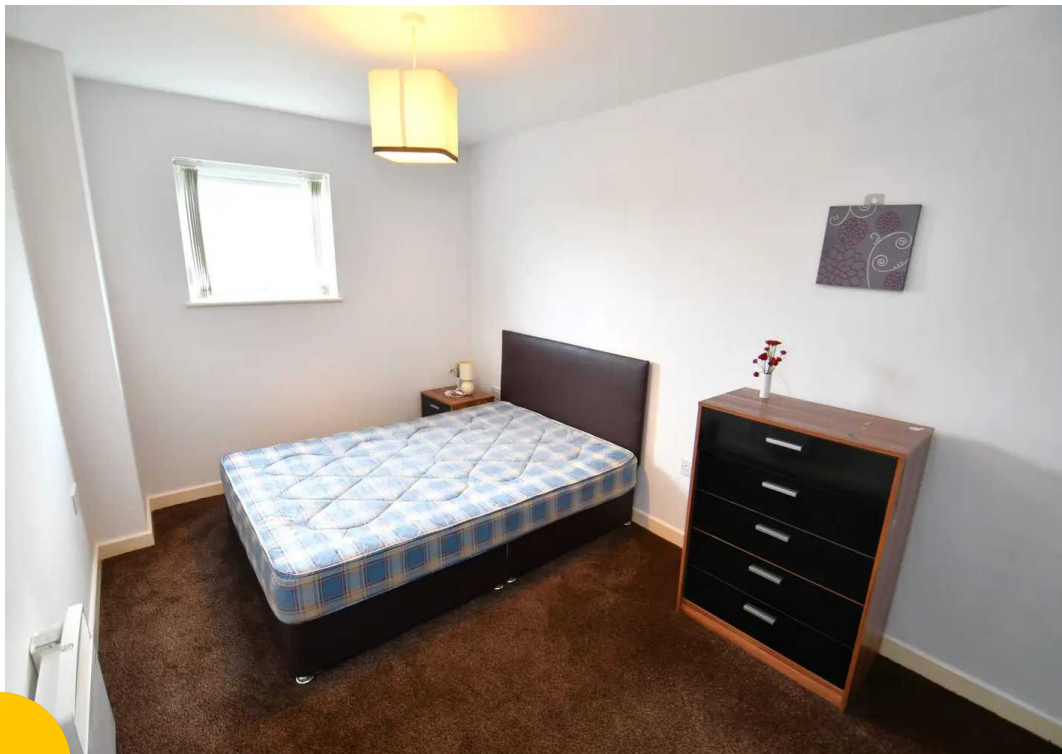
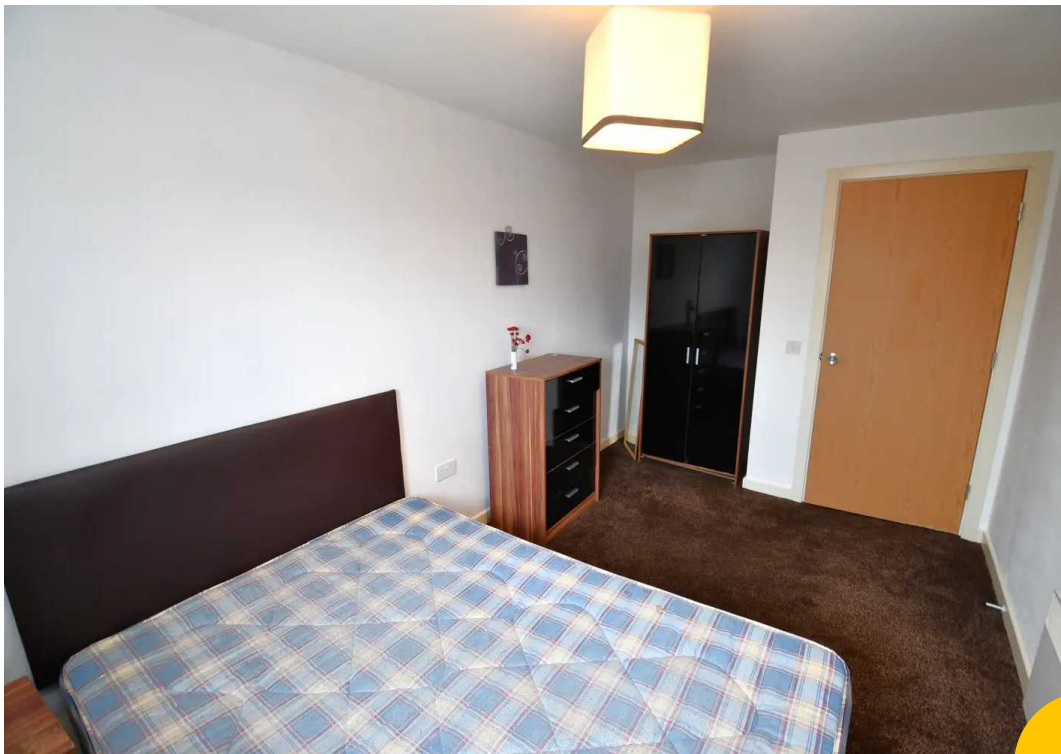
7' 9" x 4' 3" (2.36m x 1.30m)

Featuring a shower cubicle, hand wash basin and W.C. Complete with a ceiling light point, part tiled walls and cushioned flooring.

External

Lift access.





HILLS







Hills | Salfords Estate Agent

Hills Residential, Sentinel House Albert Street – M30 0SS

0161 707 4900

sales@hills.agency

www.hills.agency/



THE PROPERTY MISDESCRIPTIONS ACT 1991 The Agent has not tested any apparatus, equipment, fixtures and fittings or services and so cannot verify that they are in working order or fit for the purpose. A Buyer is advised to obtain verification from their Solicitor or Surveyor. References to the Tenure of a Property are based on information supplied by the Seller. The Agent has not had sight of the title documents. A Buyer is advised to obtain verification from their Solicitor. You are advised to check the availability of this property before travelling any distance to view. Every effort and precaution has been made to ensure these particulars are correct and not misleading but their accuracy is not guaranteed nor do they form part of any contract. If there is any point which is of particular importance to you, please contact us and we will provide any information you require. This is advisable, particularly if you intend to travel some distance to view the property. The mention of any appliances and services within these details does not imply that they are in full and efficient working order. These particulars are in draft form awaiting Vendors confirmation of their accuracy. These details must therefore be taken as a guide only.