



# *Glenview*

*Longridge*

*Offers in the Region of: £495,000*



**Pendle Hill  
Properties**



*Glenview, Longridge*  
**£495,000 Offers in the**  
*Region of*

A great opportunity to purchase this six-bedroom property, briefly comprising a lounge, kitchen/breakfast room, study, second lounge, wc, utility room, master bedroom with en-suite, five further bedrooms, bathroom, rear garden, and driveway.



## LOUNGE

A spacious lounge briefly comprises laminate wood flooring, radiator, ceiling light point, and two double glazed windows overlooking the side and back of the property.

## KITCHEN / BREAKFAST ROOM

A fully fitted kitchen with a range of base and wall-mounted units with complimentary laminate worktops briefly comprises a Rangemaster with a five-ring gas hob and oven with overhead extractor, ceramic sink with drainers, and mixer tap, tiled splashback, space for a fridge freezer, dishwasher, breakfast bar, stone flooring, and ceiling spotlights.

## DINING ROOM

Located at the back of the property the dining room briefly comprises laminate wood flooring, ceiling spotlights, a radiator, and double-glazed doors to the rear.

## STUDY/RECEPTION

Located at the front of the property the study briefly comprises stone flooring, electric fire, a radiator, ceiling spotlights, and a large, double-glazed window to the front.

## SECOND LOUNGE

The second lounge briefly comprises carpeted flooring, wall-mounted and ceiling light points, a log burner with a stone mantle, a radiator, and two double-glazed windows with one overlooking the front and side of the property.

## MASTER BEDROOM WITH EN-SUITE

A spacious double bedroom with double-glazed windows overlooking the front and side of the property briefly comprises carpeted flooring, a ceiling light point, and a radiator.

The en-suite boasts tiled flooring, a low-level WC, a pedestal sink, a bath with overhead shower attachment, a towel warmer, ceiling spotlights, and a frosted window to the side.

## BEDROOM TWO

A second double bedroom with a double-glazed window overlooking the front briefly comprises carpeted flooring, an electric fireplace, a ceiling light point, and a radiator.

## BATHROOM

A family bathroom briefly comprises a bath with overhead rainfall shower attachment, low-level WC, pedestal sink, towel warmer, tiled flooring, ceiling spotlights, and a Velux window.

## BEDROOM THREE

The third bedroom boasts carpeted flooring, a double-glazed window to the rear of the property, a ceiling light point, and a radiator.

## BEDROOM FOUR

The third bedroom boasts carpeted flooring, a double-glazed window to the front, a ceiling light point, and a radiator.

## BEDROOM FIVE

The fifth bedroom briefly comprises laminate wood flooring, ceiling light point, eaves storage, and a double-glazed window to the rear.

## BEDROOM SIX

Bedroom six boasts carpeted flooring, a radiator, a ceiling light point, and a double-glazed window to the side of the property.

## EXTERNAL

To the rear is a patio with a large garden.

To the side of the property is a gravel drive.

## ADDITIONAL INFORMATION

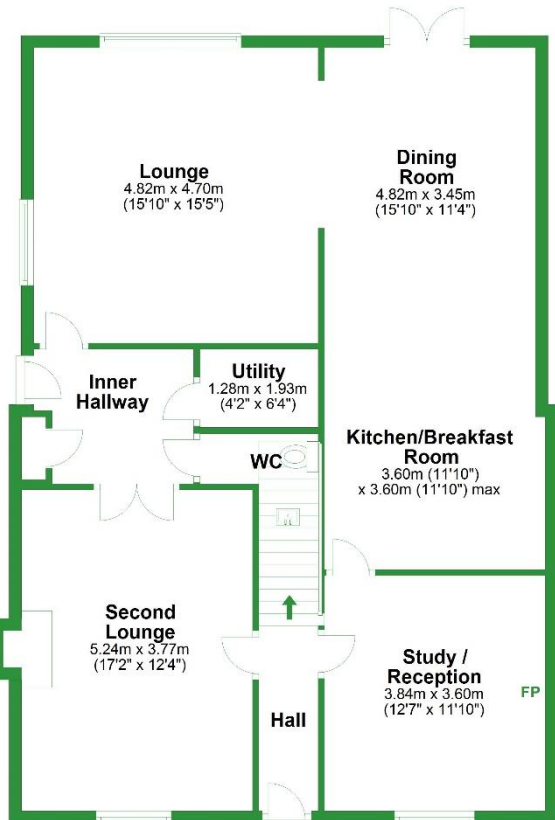
Tenure = Freehold

Council Tax Band = D



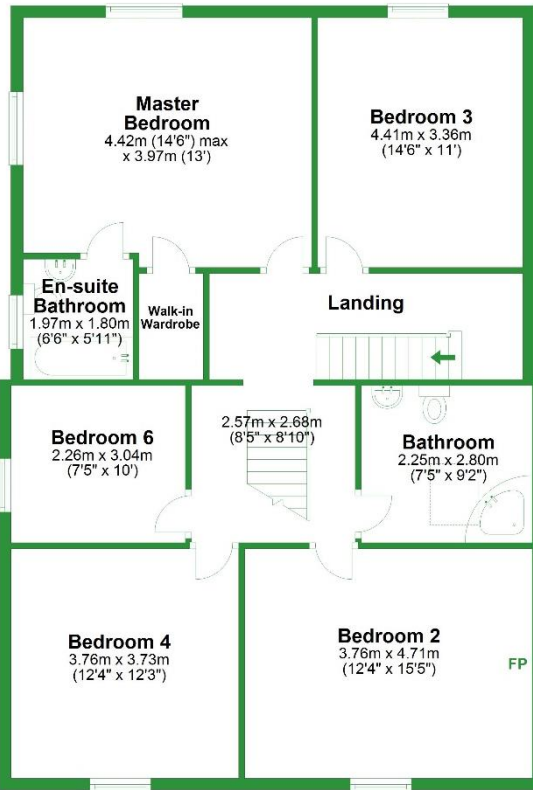
### Ground Floor

Approx. 103.9 sq. metres (1118.9 sq. feet)



### First Floor

Approx. 103.6 sq. metres (1115.6 sq. feet)

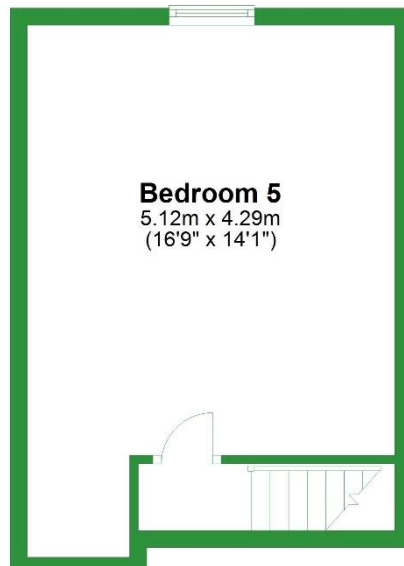


Total area: approx. 233.4 sq. metres (2512.2 sq. feet)

For illustrative purposes only. Not to scale. All sizes are approximate.  
Plan produced using PlanUp.

### Second Floor

Approx. 25.8 sq. metres (277.7 sq. feet)



Important: We would like to inform prospective purchasers that these sales particulars have been prepared as a general guide only. A detailed survey has not been carried out nor the services, appliances, and fittings have been tested. Room sizes should not be relied upon for furnishing purposes and are approximate. Floor plan measurements are for guidance only, and may not be to scale. Particulars included have been signed off by the vendor(s).



**Pendle Hill Properties**

Read: 154 Whalley Road Read BB12 7PN 01282 772048

Longridge: 74 Berry Lane Longridge PR3 3WH 01772 319421

e. [info@pendlehillproperties.co.uk](mailto:info@pendlehillproperties.co.uk)

w. [www.pendlehillproperties.co.uk](http://www.pendlehillproperties.co.uk)