



A spacious two-bedroom flat located on Teignmouth Sea front. The property benefits from stunning sea views and an allocated parking space. The building itself has grade two listing status on the front of the terrace and there is a communal lift providing access to all floors.

[Powderham Terrace | Teignmouth | TQ14 8BL](#)





PROPERTY TYPE

Apartment



SIZE

769 SQ FT



LOCATION

Teignmouth



AGE

Victorian



BEDROOMS

2



RECEPTION ROOMS

1



BATHROOMS

1



WARMTH

Central Heating



PARKING

Allocated Parking



OUTSIDE SPACE



EPC RATING

32 F



COUNCIL TAX BAND

C



in a nutshell...

- Sea Views
- Seconds Walk to The Beach
- Close to Town Centre
- Allocated Parking
- Two Double Bedrooms
- Spacious Lounge Diner
- Desirable Location
- Lift Access
- Chain Free



the details...

THE PROPERTY

Located on Teignmouth sea front is this spacious two bedroom flat. Situated in a characterful building that has grade two listing status on the front of the terrace. The property has a communal staircase to each floor as well as a communal lift also providing access to each floor.

STEP INSIDE

As you walk through the front door there is a large hallway that greets you. The Hallway provides access to storage cupboards and doors to further rooms.

There is a spacious living area to the rear of the flat. A large lounge/diner with ample space for furniture including table and chairs. There is a feature electric fireplace with hearth and mantle. The lounge has a large window providing a stunning sea view. As you pass through the dining area there is a door to the kitchen. The kitchen has been replaced in the last ten years and has plenty of floor and wall mounted storage units. There is an integral oven and hob, integral microwave and space and plumbing for washing machine. The kitchen also benefits from having an integral fridge and freezer. It is a light and airy room and has plenty of work surface space for preparing those homely meals.

The two bedrooms in the property are both large doubles. One sits at the front of the flat whilst down the other end of the hallway sits the other. The bedroom at the back of the flat has a stunning sea view and there is more than enough space for wardrobes, chest of drawers and any further bedroom furniture. The other bedroom has a view across to Teignmouth Harbor. Again, there is room for a wardrobe and any further bedroom furniture.

Finally we have the shower room. This was converted recently from a bathroom to a wet room. It has a shower, low level WC and wash hand basin. The wet room has tiled walls throughout.

PARKING

Under the building there are parking spaces and the property benefits from an allocated space and storage cupboard.



the location...

Teignmouth has a great deal to offer, not least its superb sandy beach, award winning children's play area and the nearby golf courses. Water sport activities are well catered for with two sailing clubs, deep water moorings and a diving school. This picturesque town has a Victorian Pier and new theatre and a wide selection of bars and restaurants, and well-known shops and supermarkets including Lidl and Morrisons. It also benefits from easy access to the A380, and the mainline railway station at Teignmouth and the International Airport at Exeter.

Shopping

Convenience Store: Co-op 0.3 miles

Supermarket: Lidl 0.4 miles

Town Centre: Teignmouth 0.3 miles

Relaxing Beach:

Teignmouth Back Beach 350 ft (approx)

Park: 0.1 miles

Coombe Valley Nature Reserve: 1.3 miles

Teignmouth Grand Pier: 0.2 miles

Travel:

Bus stop: Den Road 0.2 miles

Train station: 0.4 miles

Main travel link: A380 4.2 miles

Schools:

Our Lady & St Patrick's Primary School: 1.1 miles

Teignmouth Community School: 1.3 miles

Please check Google maps for exact distances and travel times.

Property postcode: TQ14 8BL

Need a more complete picture? Get in touch with your local branch...

Tel **01626 870 870**
Email **teignmouth@completeproperty.co.uk**
Web **completeproperty.co.uk**

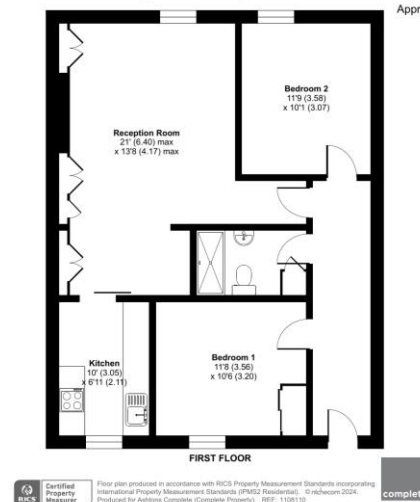
Complete
13 Wellington Street
Teignmouth
Devon
TQ14 8HW

Are you selling a property too? Call us to get a set of property details like these...



Dolphin Court, Teignham Terrace, Teignmouth, TQ14

Approximate Area = 769 sq ft / 71.4 sq m
For identification only - Not to scale



Our note. For clarification we have prepared these sales particulars as a general guide and have not carried out a detailed survey nor tested the services, appliances or fittings. Room sizes should not be relied upon for carpets or furnishings. If there are any important matters which are likely to affect your decision to buy, please contact us before viewing this property. These particulars, whilst believed to be accurate, are set out as a general outline only for guidance and do not constitute any part of an offer or contract. Intending purchasers should not rely on them as statements of representation of fact, but must satisfy themselves by inspection or otherwise as to their accuracy. No person in the employment of Complete Property Services has the authority to make or give any representation or warranty in respect of the property.

SKETCH PLAN FOR ILLUSTRATIVE PURPOSES ONLY. All measurements and sizes and locations of walls, doors, window fittings and appliances are shown conventionally and are approximate only and cannot be regarded as being a representation either by the Seller or his Agent. We hope that these plans will assist you by providing you with a general impression of the layout of the accommodation. The plans are not to scale nor accurate in detail. © Unauthorised reproduction prohibited.

As part of the service we offer we may recommend ancillary services to you which we believe will help with your property transaction. We wish to make you aware that should you decide to proceed we will receive a referral fee. This could be a fee, commission, payment or other reward. We will not refer your details unless you have provided consent for us to do so. You are not under

any obligation to provide us with your consent or to use any of these services, but where you do you should be aware of the following referral fee information. You are also free to choose an alternative provider. To find out more about this, please speak to a member of the team.



selling

letting

land &
new homes

signature
homes

complete.