





MQ Estate Agents are proud to present to the market this fabulous two bedroomed, third floor apartment in the ever popular Oatlands area in Glasgow. The property comprises of a fabulous open, lounge, kitchen and dining space, two double bedrooms, one with en-suite shower room, family bathroom, good storage and communal garden space, plenty of residents parking and secure bike storage. The property further benefits from a secure door entry system, gas central heating and double glazing throughout. The property is furnished to a high standard throughout and would be an excellent opportunity for a variety of purchasers including those looking to upsize or the discerning buy to let investor.

MQ Assisted Move, Part Exchange and 95 % mortgages are available.

LOUNGE/KITCHEN/DINING

27' 5" x 13' 3" (8.37m x 4.06m) A beautiful open plan lounge, kitchen and dining area which is flooded with natural light and has fitted storage along the emerald green feature wall which makes the ideal focal point to the room. In the kitchen and dining area there is a wide variety of wall, floor and tower mounted units in a dark finish with complementary worksurfaces. Integrated appliances include a gas hob, electric oven and grill, microwave, washing machine, dishwasher and fridge freezer. The room is complete with both spotlight and LED lighting. Flooring is laid to a grey wood effect laminate.

MASTER BEDROOM

9' 7" x 13' 2" (2.94m x 4.03m) The master bedroom is a generously sized room with fitted wardrobes providing excellent storage. Flooring is laid to plush carpeting.



BEDROOM TWO

13' 2" x 8' 5" (4.03m x 2.59m) The second double bedroom has ample space for a large wardrobe and flooring is laid to carpet.

BATHROOM

6' 9" x 6' 7" (2.07m x 2.01m) The bathroom comprises of a white, three piece suite of bath with overhead shower, low flush WC and wash hand basin. The room is complete with spotlight lighting.

EN-SUITE SHOWER ROOM

6' 9" x 3' 4" (2.07m x 1.02m) The en-suite shower room comprises of a white, three piece suite of shower, low flush WC and wash hand basin.

LOCATION

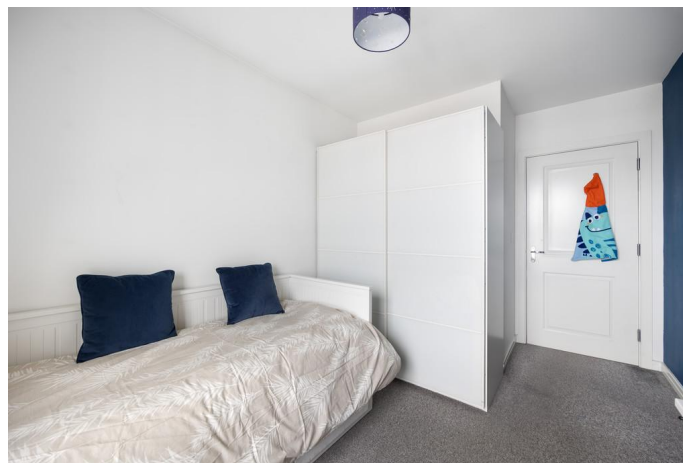
Kilbride Terrace is in Oatlands, a popular neighbourhood of Glasgow, conveniently situated for the city centre and local transport routes. On the south bank of the River Clyde and approximately one mile south-east of the city centre, Oatlands itself has a shopping centre, an award-winning library and a learning centre. It also has leisure amenities and local schools all within easy reach. A short walk away there is a local café, convenience store and of course the wonderful Glasgow Green, a fantastic local greenspace for walks and events.

VIEWINGS

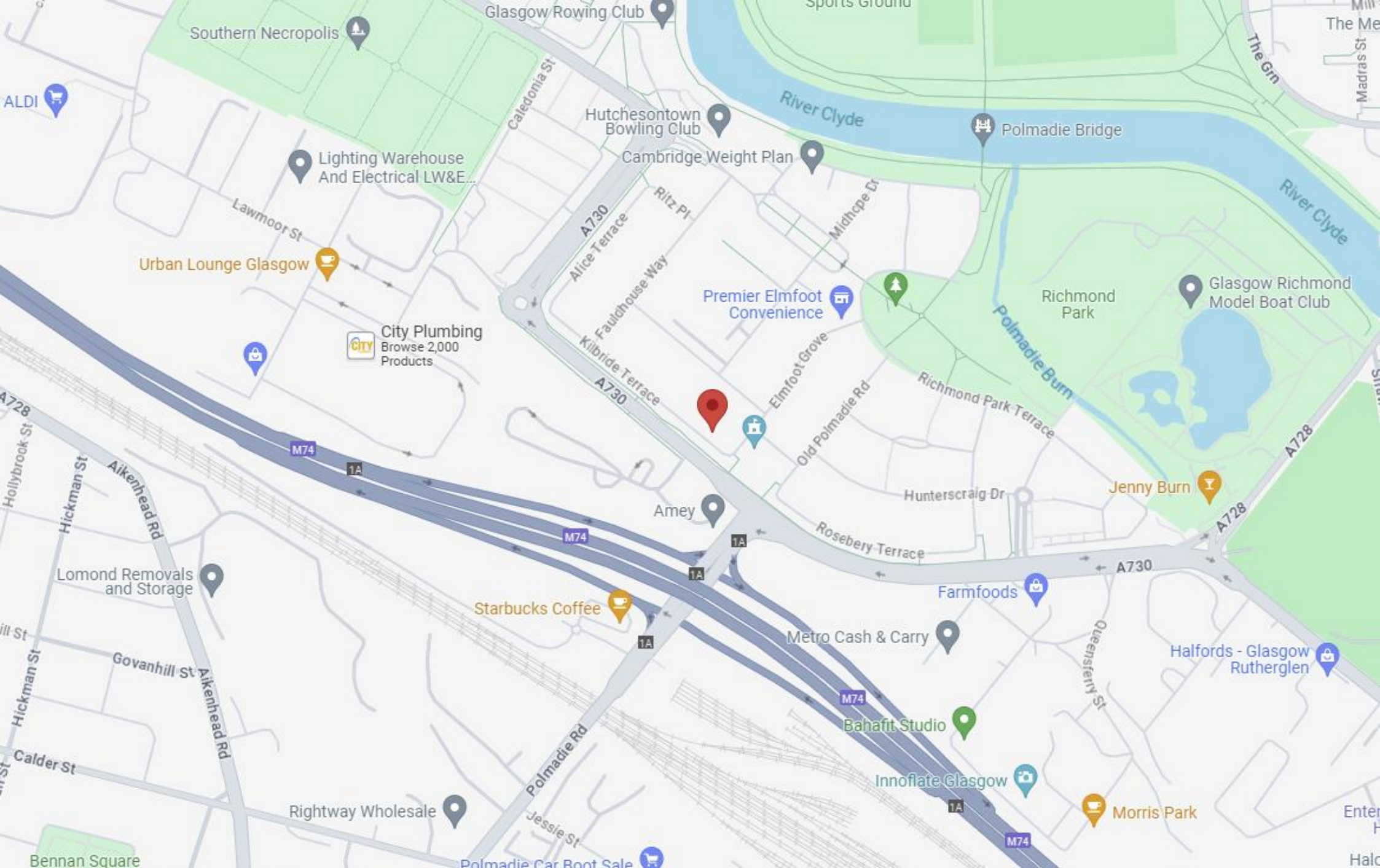
Viewing is by appointment only. Early internal viewing is recommended to appreciate all this beautiful apartment has to offer.

MQ Estate Agents are open 7 days a week: Monday to Friday 8am to 9pm & Saturday & Sunday 8.30am - 9pm to arrange your viewing or valuation appointment.









Call free on 0800 074 8585

www.mqestateagents.co.uk

We are registered with the Office of Fair Trading and the Property Ombudsman. You can be confident that the service is not only regulated but also fully transparent. Whilst every precaution to ensure accuracy has been taken during the preparation of these particulars, if there is any aspect which is critical to your interest or which you find misleading, please contact us for further information. In accordance with the terms of the Property Misdescriptions Act, we wish to clarify all kitchen appliances or indeed and other mechanical items, apparatus or appliances relating to this property, including the central heating system, has not been inspected or tested and therefore MQ Estate Agents Limited do not warrant either now or at a later date their correct functions. Please note photographs taken with a wide angled lens and all measurements are approximate and are taken with a laser tape measure, therefore MQ Estate Agents Limited cannot guarantee true room sizes and will not be held responsible.