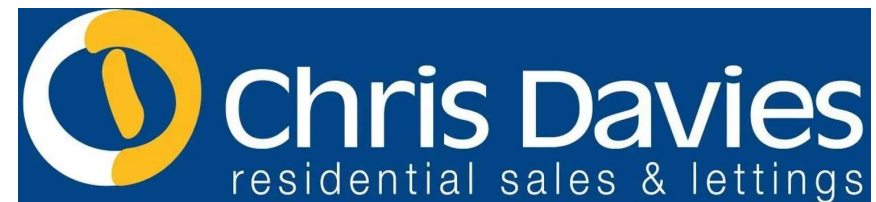




Chris Davies
Sales and Lettings
01493 414444
www.chrisdavies.co.uk
FOR SALE

NO PARKING IN DESIGNATED
AREAS OR ON FOOTWAYS
THIS CONTRAVENTION IS
PROHIBITED BY LAW

2019



1 Lower Pyke Street, Barry
Offers Over **£170,000**



1 Lower Pyke Street

Barry, Barry

Charming two bedroom end terrace perfect for first-time buyers/downsizers. Well-proportioned lounge/diner, separate kitchen, large shower room. Prime location with EPC E50. Courtyard garden ideal for relaxation/entertainment.

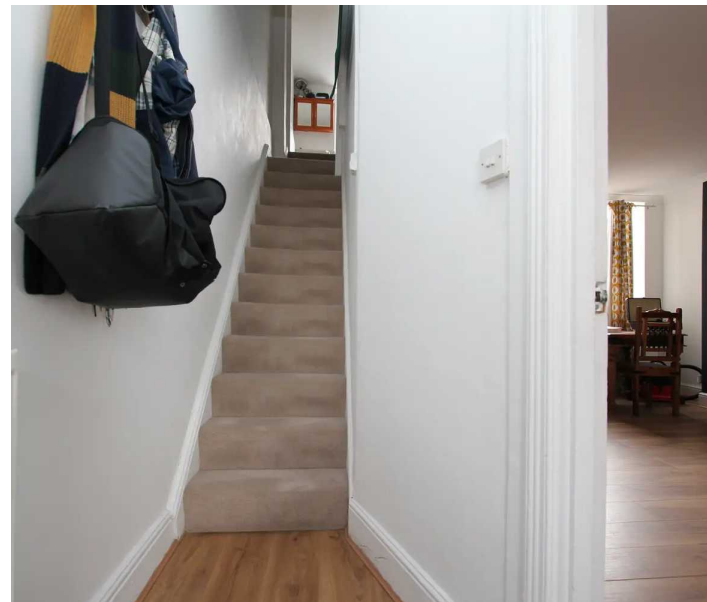
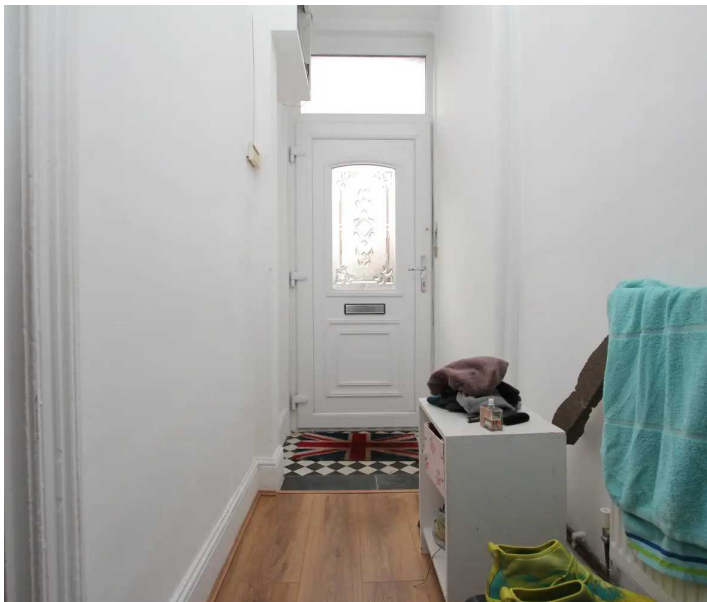
Council Tax band: C

Tenure: Freehold

EPC Energy Efficiency Rating: E

EPC Environmental Impact Rating: E

- TWO BEDROOMS
- LARGE LOUNGE/DINER
- LARGE SHOWER ROOM
- IDEAL FIRST TIME BUY
- EPC E50
- For further information on broadband and mobile coverage in the area <https://checker.ofcom.org.uk/>
- NO ONWARD CHAIN





Hallway

Entrance via a uPVC front door with an opaque glass panel and a matching opaque glass panel above. Wooden effect laminate flooring, smooth walls and a textured ceiling. A radiator. A door leading through to the lounge/diner to the left and a carpeted staircase ahead.

Lounge/Diner

22' 5" x 11' 11" (6.83m x 3.63m)

A continuation of the laminate wood effect flooring from the hallway, smooth walls and a smooth coved ceiling. A large front aspect window, a rear aspect window, two radiators and a feature log burning fire place. An under stairs storage cupboard and a door leading through to the kitchen. Measurements exclude the depth of the various alcoves.

Kitchen

7' 10" x 14' 5" (2.39m x 4.39m)

Black tiled flooring, partly smooth and partly textured walls with a smooth ceiling. Wooden base level units and painted wooden eye level units with modern black handles. Black countertops complementing the floor tiles nicely. Space and plumbing for a washing machine. A white porcelain sink with a stainless steel mixer tap ovetop. Space for an oven and a fridge freezer. A radiator. Three side aspect windows, a rear aspect window and a uPVC door with opaque glazing leading out to the garden.

Shower Room

7' 9" x 7' 7" (2.36m x 2.31m)

Vinyl wood effect flooring, smooth walls with half height tiling and a smooth ceiling. Full height tiling within the walk-in shower. The shower has sliding glass doors and a stainless steel thermostatic shower inset with a rainfall showerhead and separate rinser. A white WC and a white pedestal basin with stainless steel pillar taps.





An opaque rear aspect window and a radiator.

Bedroom One

11' 0" x 15' 6" (3.35m x 4.72m)

Carpeted with smooth walls and a textured coved ceiling. Two large front aspect windows and a radiator. Measurements exclude the depth of the alcoves.

Bedroom Two

9' 8" x 11' 1" (2.95m x 3.38m)

Carpeted with smooth walls and a textured ceiling. A large rear aspect window and a radiator.

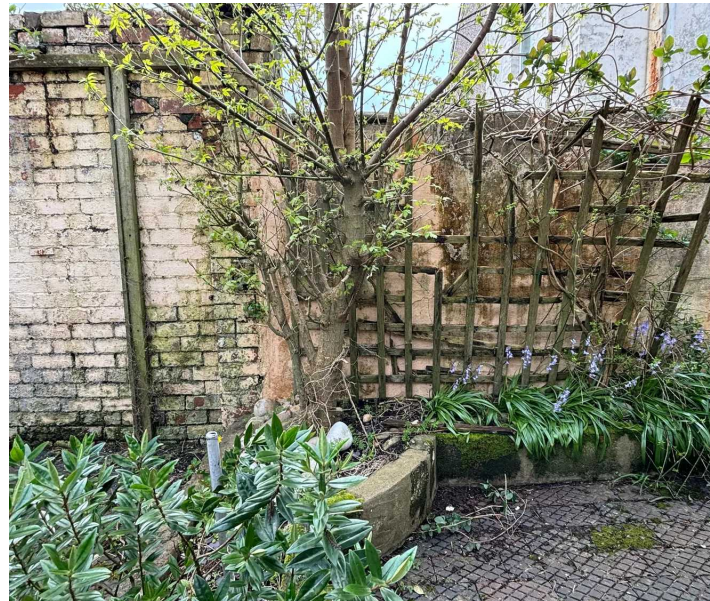
Measurements exclude the depth of the alcove and built in wardrobe.

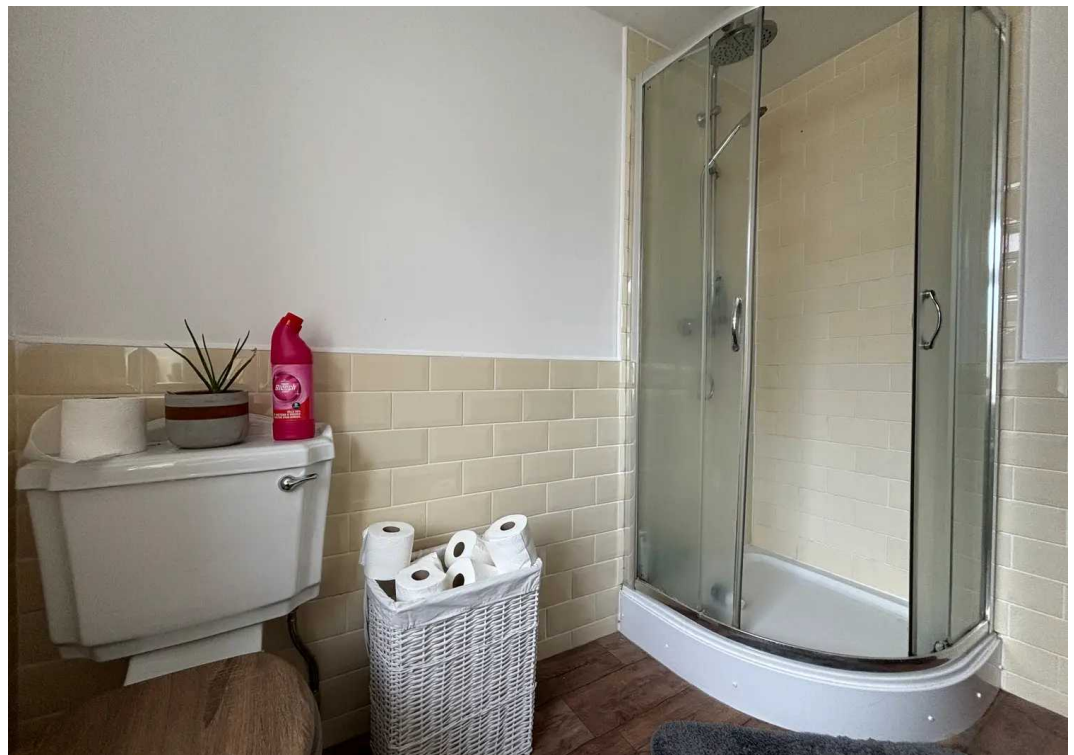




REAR GARDEN

Courtyard style garden, raised flowerbeds to the right filled with well established shrubbery and a small tree. Brick walls to both sides and an access gate to the lane.





1 Lower Pyke Street

Approximate Gross Internal Area
883 sq ft - 82 sq m



Not to Scale. Produced by The Plan Portal 2022
For Illustrative Purposes Only.



Chris Davies Estate Agents

Chris Davies Estate Agents, 24 High Street - CF62 7EA

01446 700007

barry@chris-davies.co.uk

www.chris-davies.co.uk/

HELPFUL INFORMATION - whilst we try to ensure our sales particulars are complete, accurate and reliable, if there is any point which is particularly important, please ask and we will be happy to check it, including specific information in respect of commuting links, surroundings, noise, views, or condition. For security purposes, applicants who wish to view will need to provide their name, address and telephone number. All measurements are approximate to the widest and longest points. Buyers are advised to instruct a solicitor to obtain verification of tenure and a surveyor to check that appliances, installations and services are in satisfactory condition.