



5 Bedroom Detached House located in Little Totham.

Find us on..



JOHN ALEXANDER
ESTATE AGENTS

Plains Road Little Totham Maldon CM9 8JG



5



3



3



G



TBC



£950,000

OVERVIEW

We are delighted to offer this imposing, one of a kind five bedroom detached family home in the sought after village of Little Totham. Fronting and backing onto beautiful countryside, facing South and occupying nearly half an acre, this idyllic country home offers the serenity of village life. Viewing strongly recommended

GROUND FLOOR

PORCH

10' 1" x 5' 8" (3.07m x 1.73m)

ENTRANCE HALL

Doors leading to;

SNUG

13' 9" x 12' 10" (4.19m x 3.91m)

Window to front aspect

LIVING ROOM

20' 5" x 13' 9" (6.22m x 4.19m)

Window to side aspect, sliding door to garden room and log burner

GARDEN ROOM

12' 11" x 11' 7" (3.94m x 3.53m)

Solid vaulted roof with two Velux windows, 180 degree South facing view and double doors to garden

STUDY

8' 2" x 6' 2" (2.49m x 1.88m)

Window to front aspect

CLOAKROOM

6' 6" x 2' 10" (1.98m x 0.86m)

Obscure window to porch, wash basin and WC

KITCHEN/ BREAKFAST ROOM

18' 11" x 11' 11" (5.77m x 3.63m)

Window to front aspect, opening to dining room and door to utility room. Large Island and fitted wall and base units, five ring SMEG induction hob, Double NEFF combi ovens, dishwasher and full height fridge and freezer.

UTILITY ROOM

9' 1" x 8' 2" (2.77m x 2.49m)

Window and door to rear garden, fitted wall and base units with sink, wine fridge and space for washing machine and tumble dryer

DINING ROOM

14' 7" x 9' 4" (4.44m x 2.84m)

Vaulted ceiling with two Velux windows, window to rear and side aspects plus double door to garden. Electric underfloor heating.

FIRST FLOOR

GALLERIED LANDING

Dual aspect windows to front and rear

BEDROOM ONE

12' 5" x 12' 0" (3.78m x 3.66m)

Window to rear aspect, opening to dressing area and access to en-suite

DRESSING AREA

8' 2" x 9' 1" (2.49m x 2.77m)

Window to rear aspect, opening to master bedroom and doorway to landing. This opening to the master bedroom could be closed to create a small additional bedroom if required



ENSUITE

12' 0" x 6' 0" (3.66m x 1.83m)

Window to front aspect and four piece bathroom suite including bath, corner shower, wash basin and WC

BEDROOM TWO

13' 9" x 11' 0" (4.19m x 3.35m)

Window to rear aspect

BEDROOM THREE

13' 9" x 10' 3" (4.19m x 3.12m)

Window to front aspect

BEDROOM FOUR

10' 5" x 10' 9" (3.18m x 3.28m)

Window to side aspect

BATHROOM

11' 5" x 6' 0" (3.48m x 1.83m)

Window to front aspect, Bath with shower over, wash basin, WC and bidet

SECOND FLOOR

BEDROOM FIVE

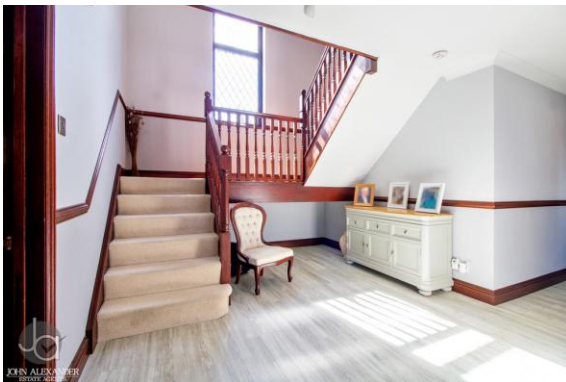
27' 10" x 9' 7" (8.48m x 2.92m)

Vaulted ceiling with three Velux windows and access to en-suite

ENSUITE

8' 5" x 6' 10" (2.57m x 2.08m)

Shower, wash basin, WC and Velux window





DOUBLE GARAGE

19' 2" x 18' 8" (5.84m x 5.69m)

Electric up and over double door plus personal door to the side and stairs to insulated loft room with lighting and power

OUTSIDE

The property looks out to a greensward from the front. A curved wall entrance to the imposing front driveway provides access to the garage plus a substantial amount of off-road parking. There is side gate access to rear garden on both sides. The enclosed rear garden faces South and backs on to the Penny Brook and farmland behind. The garden is mainly laid to lawn and has a patio and pergola covered seating area plus a shed to the back of the garden. The plot is estimated at just under half an acre (STS)



LOCATION

Little Totham is a sleepy village, surrounded by farmland providing plenty of picturesque countryside walks. However Tiptree (3.3 miles) and Maldon (5.1 Miles) are close by offering all essential amenities, schools, shopping and services. Witham train station (5.9 miles) offers mainline services to London

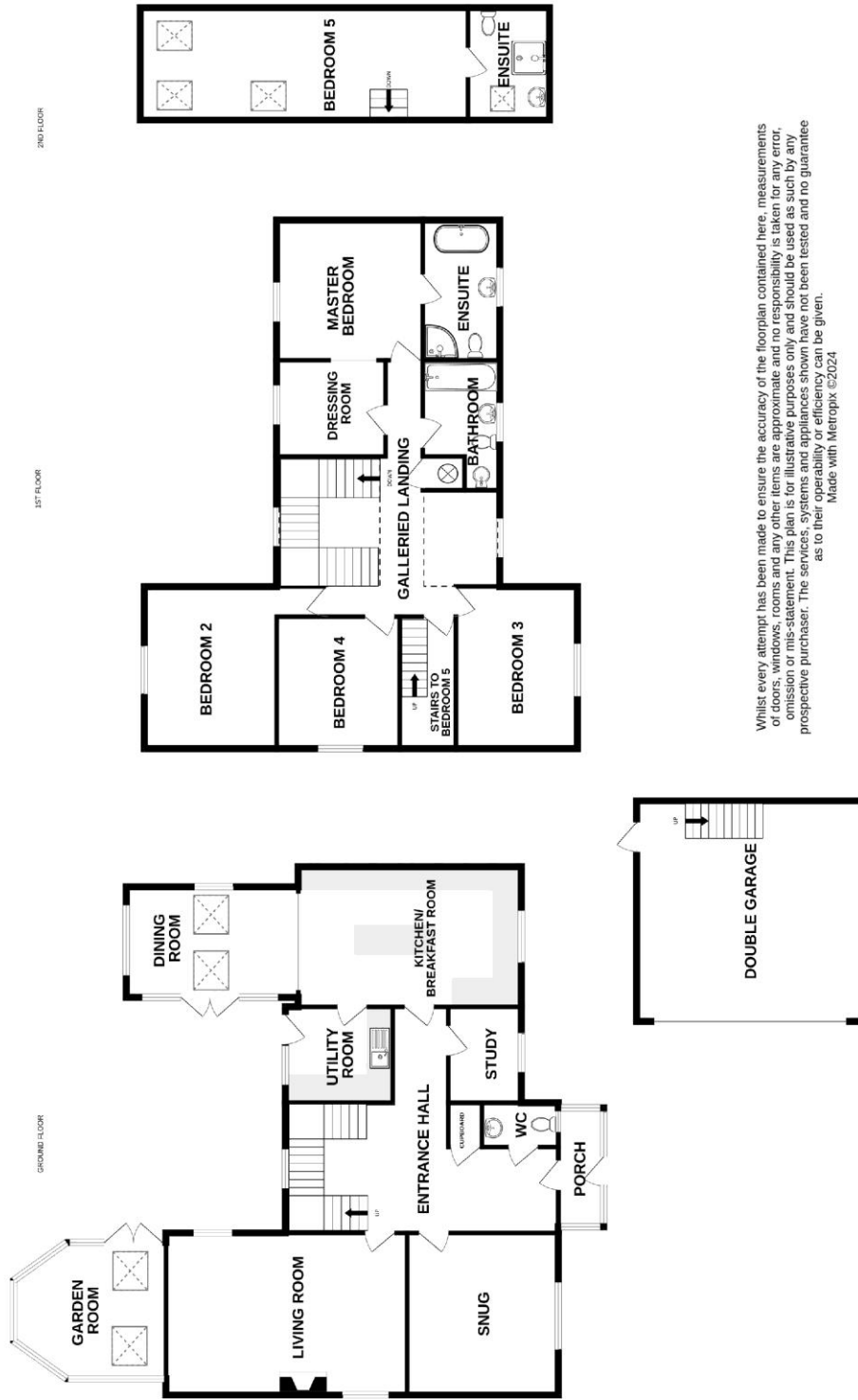




Plains Road, Little Totham CM9 8JG



FLOORPLAN



Whilst every attempt has been made to ensure the accuracy of the floorplan contained here, measurements of doors, windows, rooms and any other items are approximate and no responsibility is taken for any error, omission or misstatement. Plans are for information only and should not be used as such by any prospective purchaser. The services, systems and appliances shown have not been tested and no guarantee as to their operability or efficiency can be given.
Made with Metropix ©2024

CONTACT
1 Church Road
Tiptree
Essex
CO5 0LG

E info@john-alexander.co.uk
T 01621 814334 www.john-alexander.co.uk

Find us on..

