



Chichester Lane, Eccles

Manchester



Offers in Region of £325,000

Chichester Lane

Eccles, Manchester

Stunning four bedroom semi located on the Bridgewater Development with canal views. Spacious layout, modern kitchen/dining, en suite master, off-road parking, low maintenance garden. Ideal family home in community setting near amenities, schools, and transport links. Perfect blend of comfort and convenience!

Council Tax band: C

Tenure: Leasehold

- Fabulous Family Home Laid over Three Floors
- Family Lounge Over Looking the Bridgewater Canal
- Fitted Kitchen & Dining Area
- Four Generous Double Bedrooms
- Family Bathroom, En suite to Master & Guest W.C.
- Off Road Parking for Multiple Cars
- Low Maintenance Rear Garden with Artificial Lawn
- Located on the Desirable Bridgewater Development, Surrounded by Excellent Amenities & Transport Links
- Within Catchment for Outstanding schooling



Entrance Hallway

A welcoming entrance hallway entered via a uPVC front door. Complete with a ceiling light point, wall mounted radiator and laminate flooring.

Lounge

11' 2" x 13' 1" (3.41m x 4.00m)

Complete with a ceiling light point, double glazed window and wall mounted radiator. Fitted with carpet flooring.

Kitchen / Diner

10' 6" x 14' 8" (3.21m x 4.46m)

Featuring complementary wall and base units with integral oven, gas hob, fridge freezer, washing machine and dishwasher. Complete with a ceiling light point, patio doors and lino flooring.

Landing

Complete with a ceiling light point and carpet flooring.

Bedroom One

11' 4" x 14' 8" (3.45m x 4.47m)

Complete with a ceiling light point, double glazed window and wall mounted radiator. Fitted with carpet flooring.

En-suite

5' 3" x 6' 9" (1.61m x 2.07m)

Complete with a three-piece suite including bath, hand wash basin and W.C. Complete with a ceiling light point and tiled flooring.

Bedroom Two

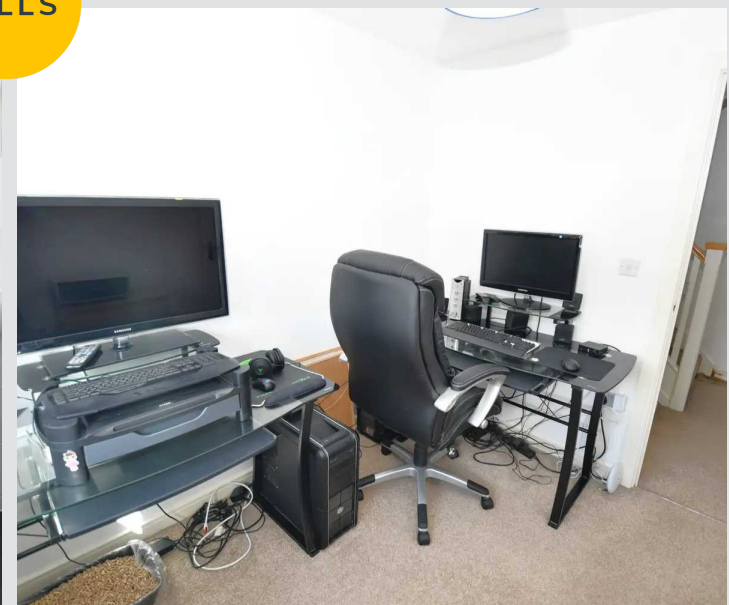
8' 4" x 14' 8" (2.53m x 4.48m)

Complete with a ceiling light point, double glazed window and wall mounted radiator. Fitted with carpet flooring.

Bedroom Three

10' 6" x 12' 8" (3.21m x 3.85m)

Featuring fitted wardrobes. Complete with a ceiling light point, double glazed window and wall mounted radiator. Fitted with carpet flooring.



Bedroom Four / Office

8' 3" x 7' 8" (2.51m x 2.34m)

Complete with a ceiling light point, two double glazed windows and wall mounted radiator. Fitted with carpet flooring.

Bathroom

7' 0" x 6' 9" (2.13m x 2.05m)

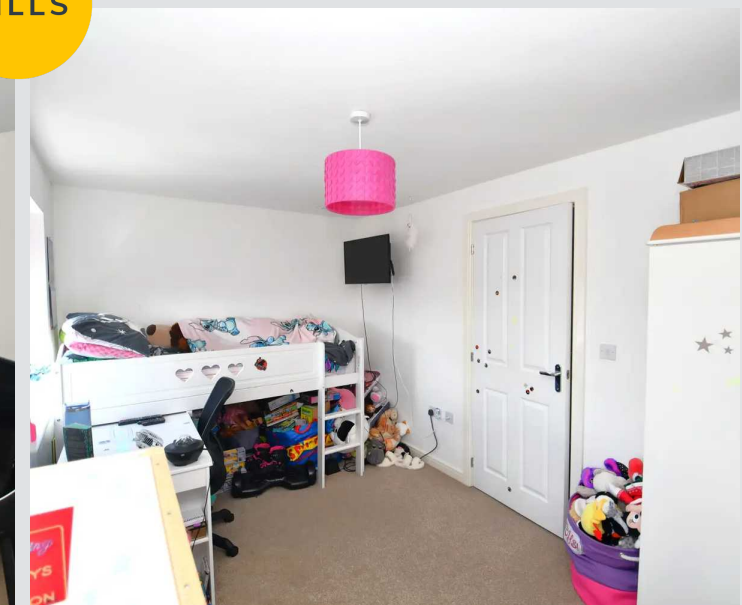
Complete with a three-piece suite including bath with shower over, hand wash basin and W.C. Complete with a ceiling light point, double glazed window and W.C.

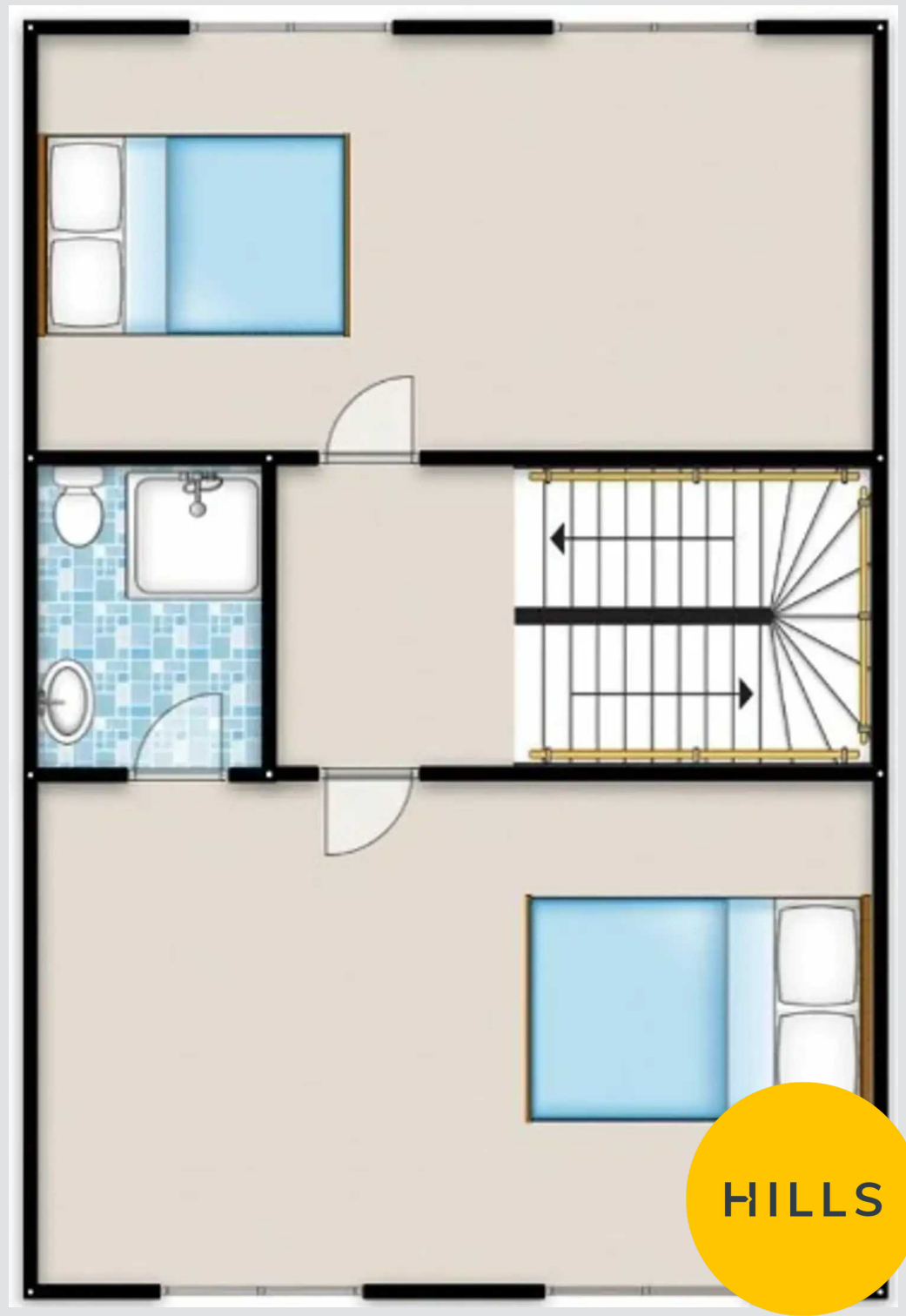
External

To the rear of the patio is a garden with lawn and paved patio.



HILLS





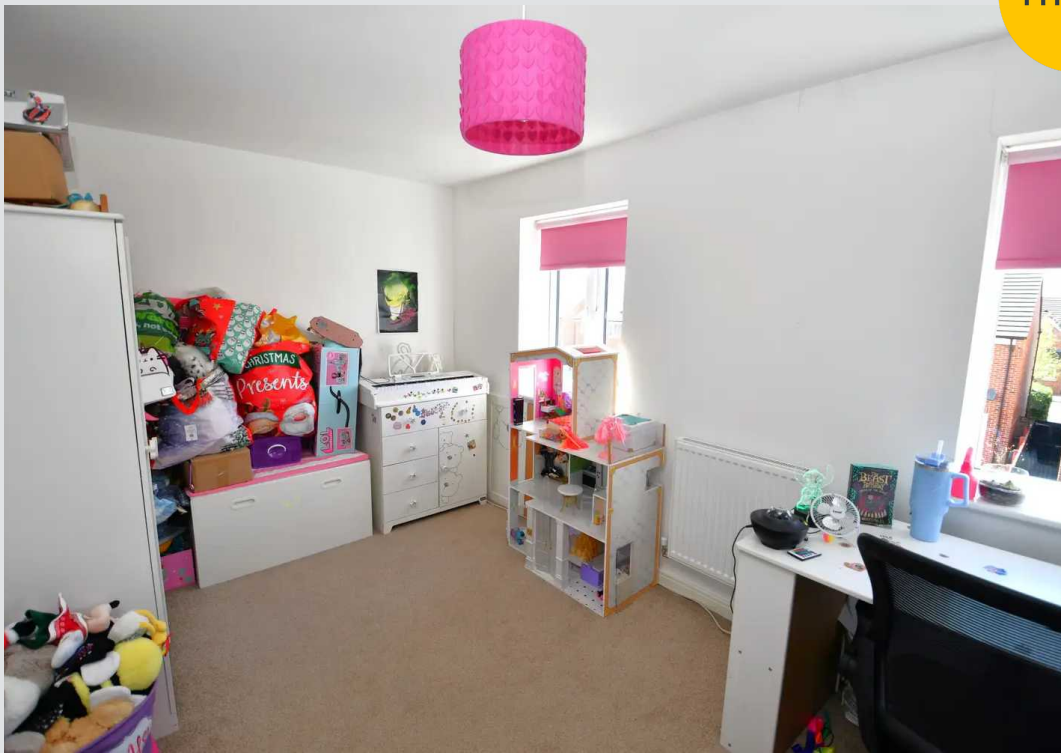
HILLS



HILLS



HILLS



Hills | Salfords Estate Agent

Hills Residential, Sentinel House Albert Street - M30 0SS

0161 707 4900

sales@hills.agency

www.hills.agency/

THE PROPERTY MISDESCRIPTIONS ACT 1991 The Agent has not tested any apparatus, equipment, fixtures and fittings or services and so cannot verify that they are in working order or fit for purpose. A Buyer is advised to obtain verification from their Solicitor or Surveyor. References to the Tenure of a Property are based on information supplied by the Seller. The Agent has not had sight of the title documents. A Buyer is advised to obtain verification from their Solicitor. You are advised to check the availability of this property before travelling any distance to view. Every effort and precaution has been made to ensure these particulars are correct and not misleading but their accuracy is not guaranteed nor do they form part of any contract. If there is any point which is of particular importance to you, please contact us and we will provide any information you require. This is advisable, particularly if you intend to travel some distance to view the property. The mention of any appliances and services within these details does not imply that they are in full and efficient working order. These particulars are in draft form awaiting Vendors confirmation of their accuracy. These details must therefore be taken as a guide only.



HILLS