

KENSINGTON
ESTATES



Flat 4 | Somerset Court | Lexham Gardens | Kensington, W8

Rent: £2,050 PW

Flat 4 | Somerset Court | Lexham Gardens | Kensington, W8

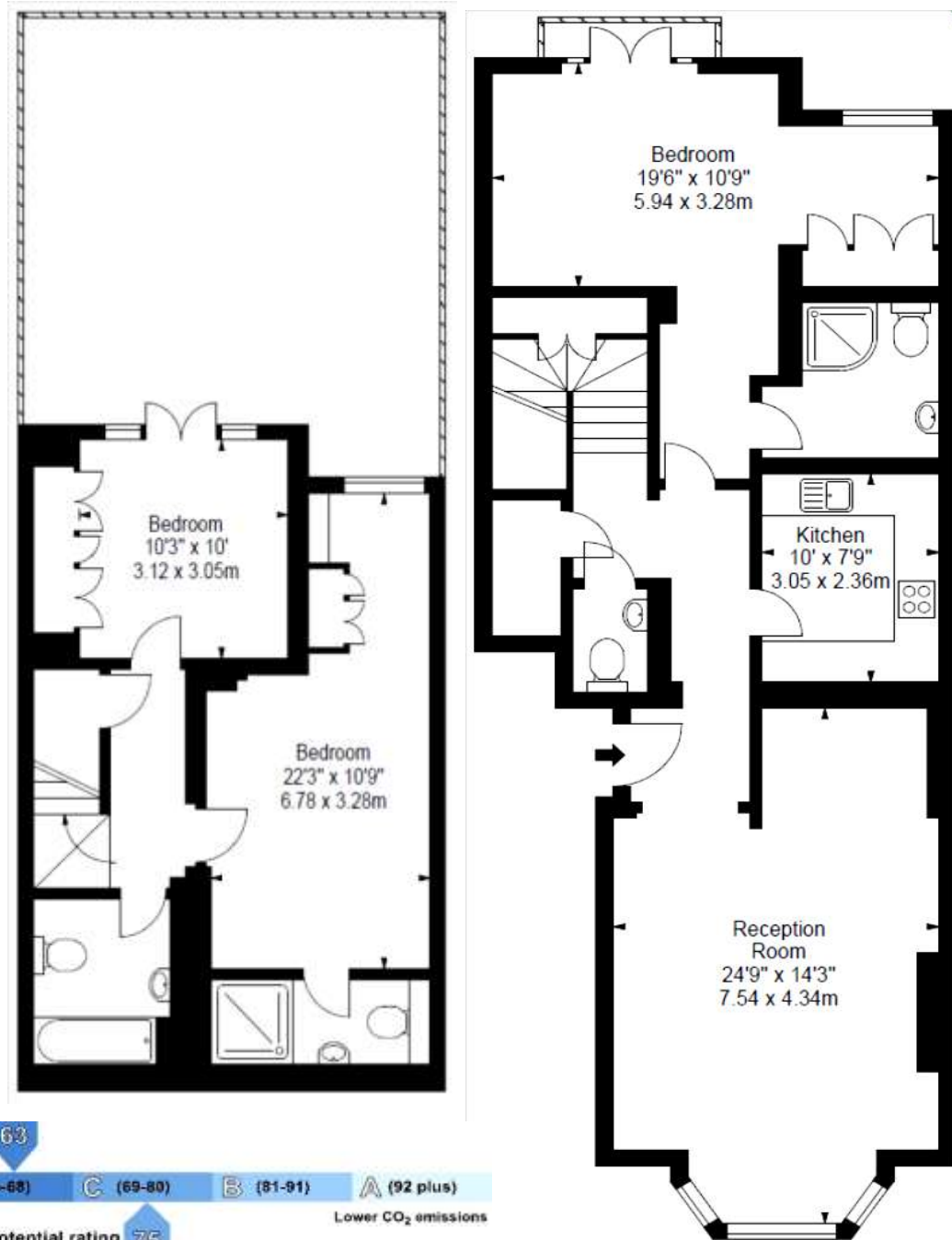
Interior designed three bedroom garden flat in this beautiful white stucco fronted immaculately maintained building in Lexham Gardens, Kensington W8

- Duplex Apartment
- 1 Reception Room
- 3 Bedroom
- 3 Bathroom
- 1 Guests WC
- Separate Modern Kitchen
- High Ceilings
- Large Double Glazed Sash Windows
- Ample Storage
- Level: Ground & Lower Ground
- Garden with tiled Patio
- Nearest tube stations: High Street Kensington, Earls'Court, Gloucester Road Tube stations.

Price
£2,050 per week, furnished

GIA
Approx. 134.15 sq m (1444 sq ft)

Local authority
Royal Borough of Kensington & Chelsea

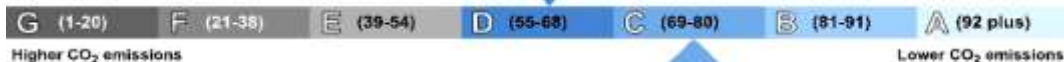


Energy Performance Certificate



Current rating **69**

Potential rating **75**



Kensington Estates, 45 Fitzroy Street, London, W1T 6EB | + 44 (0)204 538 0909

Flat 4 | Somerset Court | Lexham Gardens | Kensington, W8



Flat 4 | Somerset Court | Lexham Gardens | Kensington, W8



Kensington Estates, 45 Fitzroy Street, London, W1T 6EB | + 44 (0)204 538 0909

Flat 4 | Somerset Court | Lexham Gardens | Kensington, W8



Flat 4 | Somerset Court | Lexham Gardens | Kensington, W8



Kensington Estates, 45 Fitzroy Street, London, W1T 6EB | + 44 (0)204 538 0909

Flat 4 | Somerset Court | Lexham Gardens | Kensington, W8



Kensington Estates, 45 Fitzroy Street, London, W1T 6EB | + 44 (0)204 538 0909

Flat 4 | Somerset Court | Lexham Gardens | Kensington, W8



Kensington Estates, 45 Fitzroy Street, London, W1T 6EB | + 44 (0)204 538 0909

Flat 4 | Somerset Court | Lexham Gardens | Kensington, W8



Flat 4 | Somerset Court | Lexham Gardens | Kensington, W8



Kensington Estates, 45 Fitzroy Street, London, W1T 6EB | + 44 (0)204 538 0909



These particulars are for general information only and do not constitute any part of an offer or contract. All statements contained therein are made without responsibility on the part of the vendors or lessors and are not to be relied upon as statement or representation of fact. Intending purchasers or lessees must satisfy themselves, by inspection, or otherwise, as to the correctness of each of the statements or dimensions contained in these particulars. Minimum Three Months Tenancy. A minimum of six weeks' rent will be required as a Security Deposit for any of our properties. No administration fee will be charged.