

Crucible Homes



Milnrow Road
Sheffield, S5 9LU

£185,000

Overview

No Chain

Three Bedrooms

Spacious Family Home

Conservatory

Kitchen / Diner

EPC Rating - C



Description

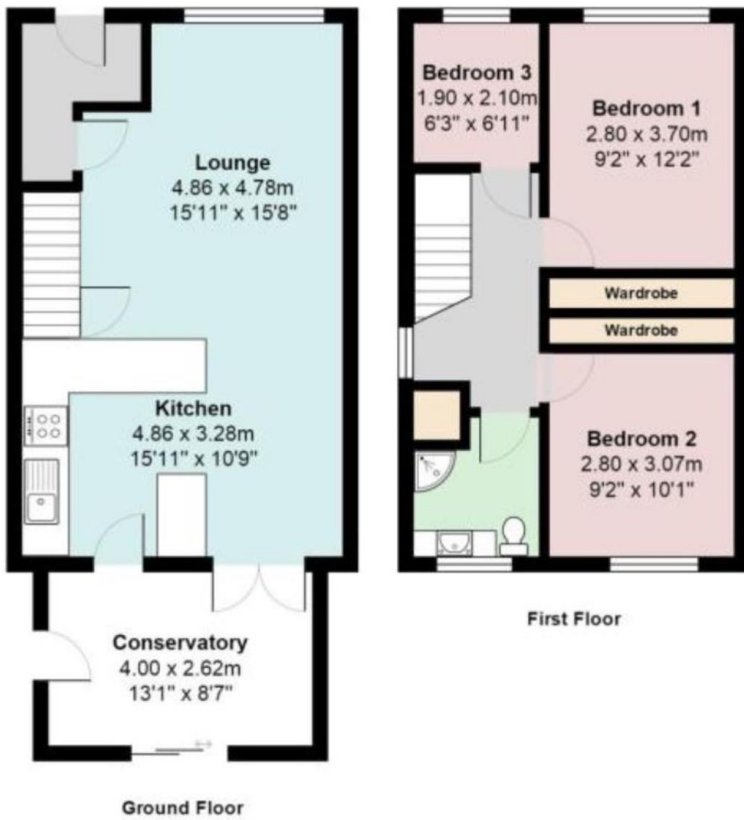
SUMMARY Crucible Homes welcome this THREE bedroom SPACIOUS family home selling with NO CHAIN.

On entry to the property is a lobby which has stairs leading to the first floor accommodation. From there you enter into a well-proportioned lounge which has feature fireplace with surround and front facing UPVC window allowing ample natural light to flood through.

Breakfasting kitchen is modern with plenty of wall and base units in a tasty wood effect gloss finish, along with integrated appliances including oven, hob with extractor over. There is also space for an automatic washing machine and fridge/freezer.

From the dining area you walk into a large UPVC conservatory with sliding patio doors leading to the decked area and enclosed mainly laid to lawn garden and single garage.





Score	Energy rating	Current	Potential
92+	A		
81-91	B		85 B
69-80	C	69 C	
55-68	D		
39-54	E		
21-38	F		
1-20	G		

To the first floor is a fully tiled family bathroom with shower over bath, vanity wash hand basin, WC and rear facing UPVC obscure window. From the landing are you have access to three bedrooms, two which are double.

This property is well presented throughout and is move in ready.

Property benefits from being set in a convenient location, close to local amenities including local schools and shops, as well having good transport links close by and excellent access to the M1 Motorway network.

AGENCY NOTE

EPC Rating - C

Council Tax Band - A

