

THOMAS BROWN

ESTATES



55 Park Avenue, Orpington, BR6 9EG

Asking Price: £800,000

- 3 Bedroom Semi-Detached Chalet Property
- Well Located for Local Schools & Stations
- Sought After, Prestigious Park Avenue
- Original Features, Immaculately Presented





Property Description

Thomas Brown Estates are delighted to offer this must view, immaculately presented three bedroom semi-detached chalet property, situated on the ever sought after and prestigious Park Avenue in South Orpington. The accommodation comprises: entrance hallway, spacious 19'4 lounge that spans the front of the property, 18'3 dining room that leads to the conservatory with feature 11'6 vaulted ceiling, bespoke Yewtree handmade kitchen with solid walnut worktop and WC to the ground floor. To the first floor are three bedrooms and the family bathroom with Burlington sanitaryware. Externally there is a well kept secluded rear garden which is mainly laid to lawn with a patio area, perfect for entertaining and alfresco dining. Garage to the side and off street parking for two cars. Park Avenue is very well located for local schools such as St. Olaves and Newstead Wood for Girls, Orpington High Street, bus routes and both Orpington and Chelsfield mainline stations. Please call Thomas Brown Estates to arrange an appointment to view, to fully appreciate the quality of location and specification on offer.



ENTRANCE HALL

Door to side, carpet, radiator.

LOUNGE

19' 4" x 16' 8" (5.89m x 5.08m) (measured into bay) Cast iron gas fireplace, double glazed bay window to front, double glazed window to front, carpet, two radiators.

DINING ROOM

18' 3" x 11' 3" (5.56m x 3.43m) Cast iron feature fireplace, double glazed French doors to conservatory, under stairs storage cupboard, carpet, radiator.

KITCHEN

15' 7" x 7' 5" (4.75m x 2.26m) Bespoke painted pine units with solid walnut wood worktops over, butler sink, Range master double oven with grill and extractor over, Bosch integrated appliances include: two under counter fridges, microwave/oven, washing machine, dishwasher, double glazed window to side, double glazed French doors to conservatory, skylight, Amtico flooring, radiator.



CONSERVATORY

18' 1" x 15' 4" (5.51m x 4.67m) All glass, brick base, double glazed French doors to rear, 11'6" vaulted ceiling, Amtico flooring.

CLOAKROOM

Low level WC, hand basin, double glazed opaque window to side, carpet, radiator.

STAIRS TO FIRST FLOOR LANDING

Carpet.

BEDROOM 1

17' 4" x 12' 2" (5.28m x 3.71m) Cast iron feature fireplace, fitted wardrobes, access to eaves storage, double glazed bay window to front, carpet, radiator.



BEDROOM 2

11' 6" x 11' 6" (3.51m x 3.51m) Double glazed window to rear, carpet, radiator.

BEDROOM 3

9' 8" x 7' 5" (2.95m x 2.26m) Double glazed window to rear, carpet, radiator.

BATHROOM

Burlington low level WC, wash hand basin, roll top bath with power shower over and hand shower attachment. Two double glazed opaque windows to side, vinyl flooring, radiator.

OTHER BENEFITS INCLUDE:

GARDEN

107' (32.61m) Patio area with rest laid to lawn, mature flowerbeds, sheds, side access.

PARKING

One space to front, shared access to additional parking space plus garage.

GARAGE

18' 0" x 10' 1" (5.49m x 3.07m) Up and over door, power and light, door to side, window to side.

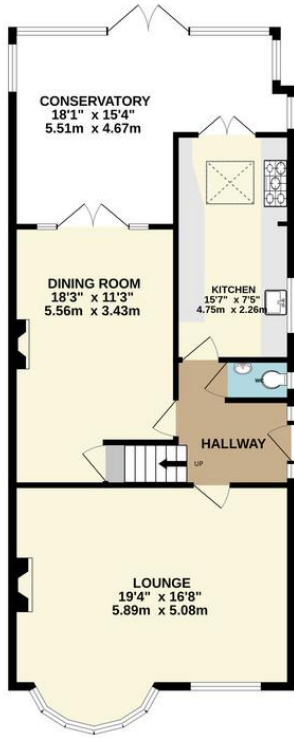
DOUBLE GLAZING

CENTRAL HEATING SYSTEM

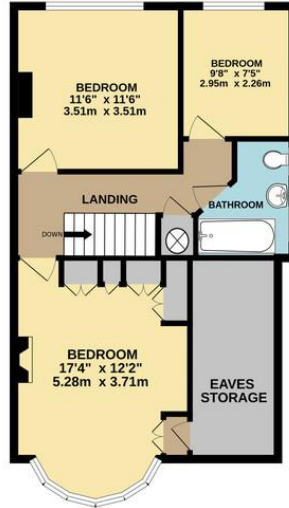
ORIGINAL FEATURES INCLUDE PICTURE RAILS, INTERNAL DOORS AND FRONT DOOR



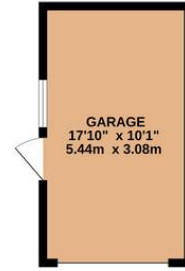
GROUND FLOOR
889 sq.ft. (82.2 sq.m.) approx.



1ST FLOOR
608 sq.ft. (56.3 sq.m.) approx.



GARAGE
180 sq.ft. (16.6 sq.m.) approx.



TOTAL FLOOR AREA : 1678 sq.ft. (155.9 sq.m.) approx.

Whilst every attempt has been made to ensure the accuracy of the floorplan contained here, measurements of doors, windows, rooms and any other items are approximate and no responsibility is taken for any error, omission or mis-statement. This plan is for illustrative purposes only and should be used as such by any prospective purchaser. The services, systems and appliances shown have not been tested and no guarantee as to their operability or efficiency can be given.
Made with Metropix ©2024

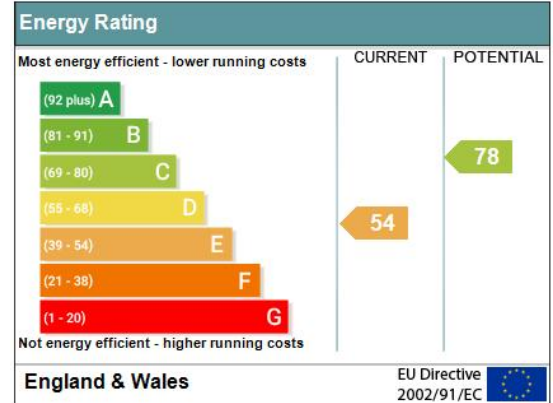


Construction: Standard

Council Tax Band: E

Tenure: Freehold

Address: 55 Park Avenue, ORPINGTON, BR6 9EG
RRN: 0330-2934-9340-2604-1651



No statement in these details is to be relied upon as representation of fact, and purchasers should satisfy themselves by inspection or otherwise as to the accuracy of the statements contained within. These details do not constitute any part of any offer or contract. Thomas Brown Estates and their employees and agents do not have any authority to give warranty or representation whatsoever in respect of this property. These details and all statements herein are provided without any responsibility on the part of Thomas Brown Estates or the vendors.

Thomas Brown Estates have not tested the equipment or central heating system mentioned in these particulars and the purchasers are advised to satisfy themselves as to the working order and condition.

Measurements: Great care is taken when measuring, but measurements should not be relied upon for ordering carpets, equipment, etc.

The Laws of copyright protect this material. The Owner of the copyright is Thomas Brown Estates. This property sheet forms part of our database, and is protected by the database right and copyright laws. No unauthorised copying or distribution without permission.

Registered Office: Lawrence & Co, 94 Brook Street, Erith, DA8 1JF. Registered in England no. 6048974

285 High Street
Orpington
Kent
BR6 0NN

www.thomasbrownestates.co.uk
sales@thomasbrownestates.co.uk
01689 884444

Telephones Manned:
Mon-Fri: 8am – 8pm
Sat: 8am – 5pm
Sun: 10am – 4pm

