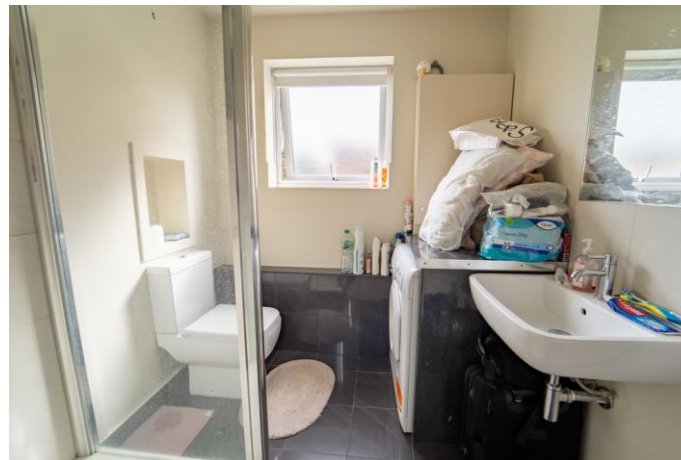








Hiltons introduces a charming studio flat in Ealing borough. For those who want comfort and ease in their living environment, this little yet functional area is perfect. The studio apartment boasts access to beautifully landscaped gardens, providing residents with a serene outdoor space to relax and unwind. The convenient location allows it to be close to parks, local services and transport hubs. Inside, there's a streamlined arrangement that makes the most of available space. There's a modern bathroom, a small kitchenette and a combined living and sleeping area. One parking space with a permit is provided. This studio is a great option for individuals, couples and investors! Highly Recommended!



Cozy studio flat in Ealing with landscaped gardens

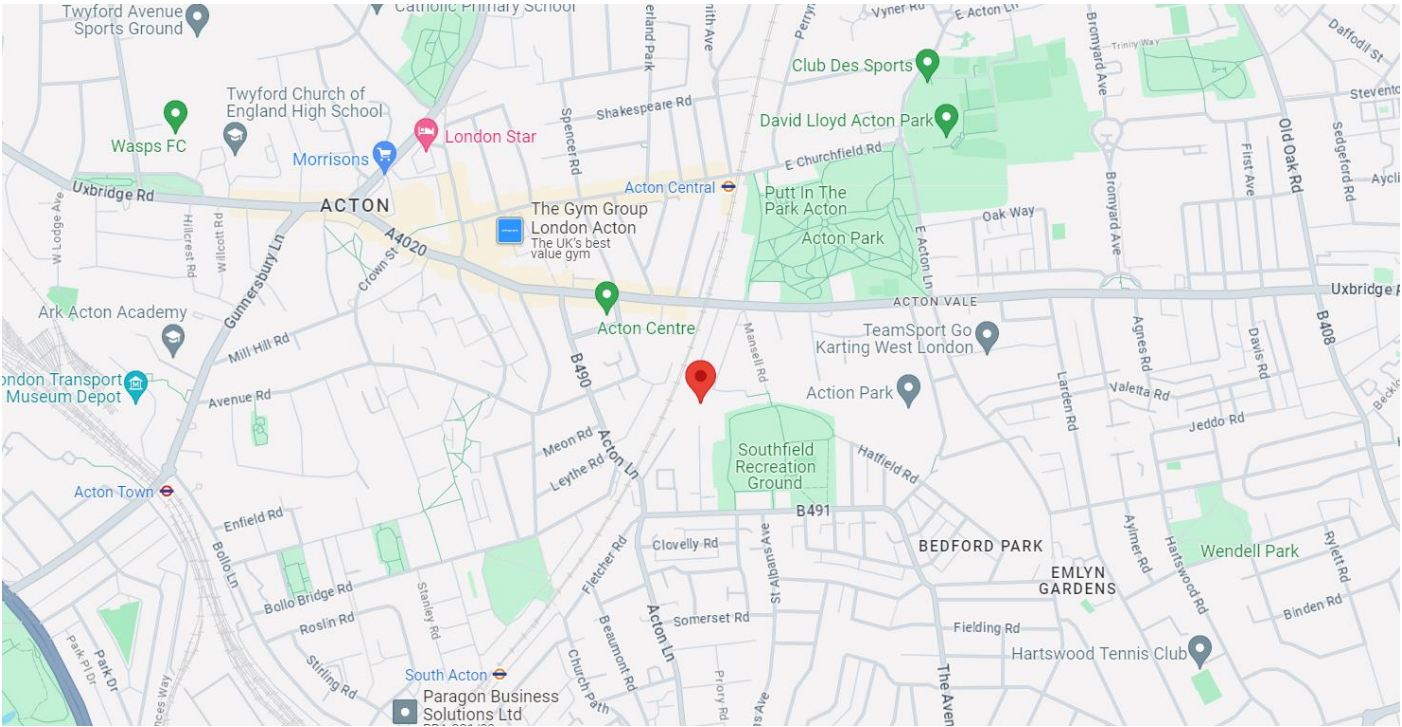
Conveniently located near parks, services, and transport

Efficient layout includes modern amenities.

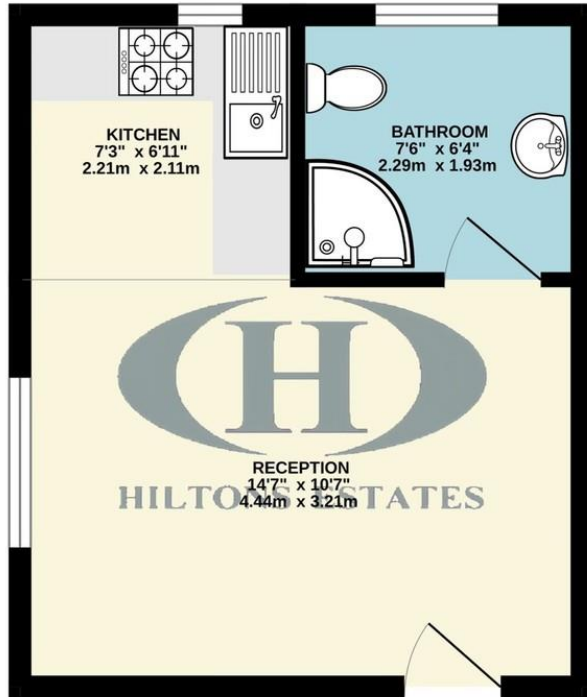
Parking space with permit

Perfect for individuals, couples, and investors.





GROUND FLOOR  
210 sq.ft. (19.5 sq.m.) approx.



Score	Energy rating	Current	Potential
92+	A		
81-91	B		81 B
69-80	C		
55-68	D	68 D	
39-54	E		
21-38	F		
1-20	G		

WILKINSON WAY, CHISWICK, W4 5XF

TOTAL FLOOR AREA: 210 sq.ft. (19.5 sq.m.) approx.

Whilst every attempt has been made to ensure the accuracy of the floorplans contained here, measurements of doors, windows, rooms and any other items are approximate and no responsibility is taken for any error, omission or mis-statement. This plan is for illustrative purposes only and should be used as such by any prospective purchaser. The services, systems and appliances shown have not been tested and no guarantee as to their operability or efficiency can be given.

Made with Metropix ©2024

Hiltons Estates, 137 Western Road  
Southall, UB2 5HN

[www.hiltons-estates.com](http://www.hiltons-estates.com)  
email: [harvin@hiltons-estates.com](mailto:harvin@hiltons-estates.com)  
0208 867 9555 / 07961 527301

Agents Note: Whilst every care has been taken to prepare these sales particulars, they are for guidance purposes only. All measurements are approximate and for general guidance purposes only and whilst every care has been taken to ensure their accuracy, they should not be relied upon and potential buyers are advised to recheck the measurements.