



3 bedroom Town House located in Colchester.

Guide Price
£350,000 - £375,000

Find us on..




JOHN ALEXANDER
ESTATE AGENTS



JOHN ALEXANDER
ESTATE AGENTS

Whitmore Drive Colchester CO4 6BT

FULL DESCRIPTION

THE HOME

Situated on the popular and picturesque Kingswood Heath development to the North of Colchester, this delightful three-bedroom, three-storey terrace property is now available for sale. John Alexander are pleased to present this well-presented home, perfect for families or those seeking a comfortable living space.

The property enjoys a prime location with excellent access to the A12 and the nearby North station, which provides convenient mainline links to London Liverpool Street. Additionally, the General Hospital and the Northern Gateway development are within easy reach.

Families will appreciate the proximity to high-performing Primary Schools nearby, as well as the Gilbert School.

The stylish home comprises of an entrance hallway with convenient cloakroom access. The fabulous open-plan living space on the ground floor seamlessly incorporates the kitchen, creating a versatile area for relaxation and entertaining.

Spread across three floors, the property features three bedrooms. The first floor houses the family bathroom, along with bedrooms two and three. Ascend to the top floor to discover the master bedroom with its en suite shower room.

Externally, the property boasts an attractive private garden and access to the parking area with two allocated spaces.

MEASUREMENTS

Entrance Hallway
Cloakroom
2.13m x 1.42m (7' 0" x 4' 8")
Lounge/Diner/Kitchen
7.24m x 4.27m (23' 9" x 14' 0")
First Floor Landing
Bedroom Two
4.27m x 4m (14' 0" x 13' 1")
Bathroom
2.16m x 1.68m (7' 1" x 5' 6")
Bedroom Three
3m x 2.13m (9' 10" x 7' 0")
Second Floor Landing
Doors leading off
Master Bedroom
6.88m x 4.5m (22' 7" x 14' 9")
En Suite
2.95m x 1.37m (9' 8" x 4' 6")
Rear Garden
Agents Note
There is a maintenance charge of £450 per annum.



3



2



1



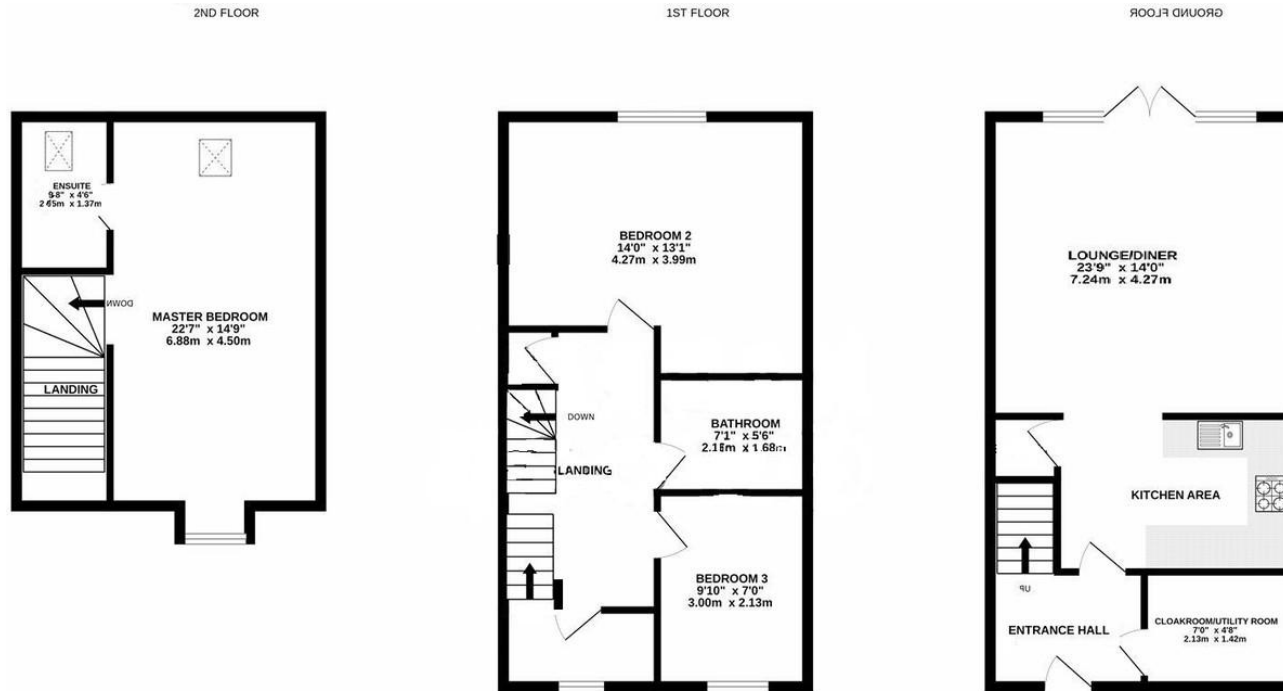
EPC

B





FLOORPLAN



Whilst every attempt has been made to ensure the accuracy of the floorplan contained here, measurements of doors, windows, rooms and any other items are approximate and no responsibility is taken for any error, omission or mis-statement. This plan is for illustrative purposes only and should be used as such by any prospective purchaser. The services, systems and appliances shown have not been tested and no guarantee as to their operability or efficiency can be given.
Made with Metropix ©2023

DIRECTIONS

CONTACT

99 London Road
Stanway
Colchester
Essex
CO3 0NY

E sales@john-alexander.co.uk

T 01206 656007

www.john-alexander.co.uk

Find us on..



JOHN ALEXANDER
ESTATE AGENTS