



**Briardene, Beverley**  
Harrogate

Guide Price **£375,000**



**MYRINGS**  
Harrogate's Family Estate Agent



## Briardene

Bewerley, Harrogate

NO CHAIN - MAGNIFICENT SURROUNDING COUNTRYSIDE - 3 BEDROOMS 2 BATHROOMS - IMMACULATELY PRESENTED THROUGHOUT - IDEAL HOLIDAY LET - LOW MAINTENANCE PATIO GARDEN - PUB 5 MINUTES WALK - CONVENIENCE STORE 6 MINUTES WALK - PATELEY BRIDGE HIGH STREET 10 MINUTES WALK

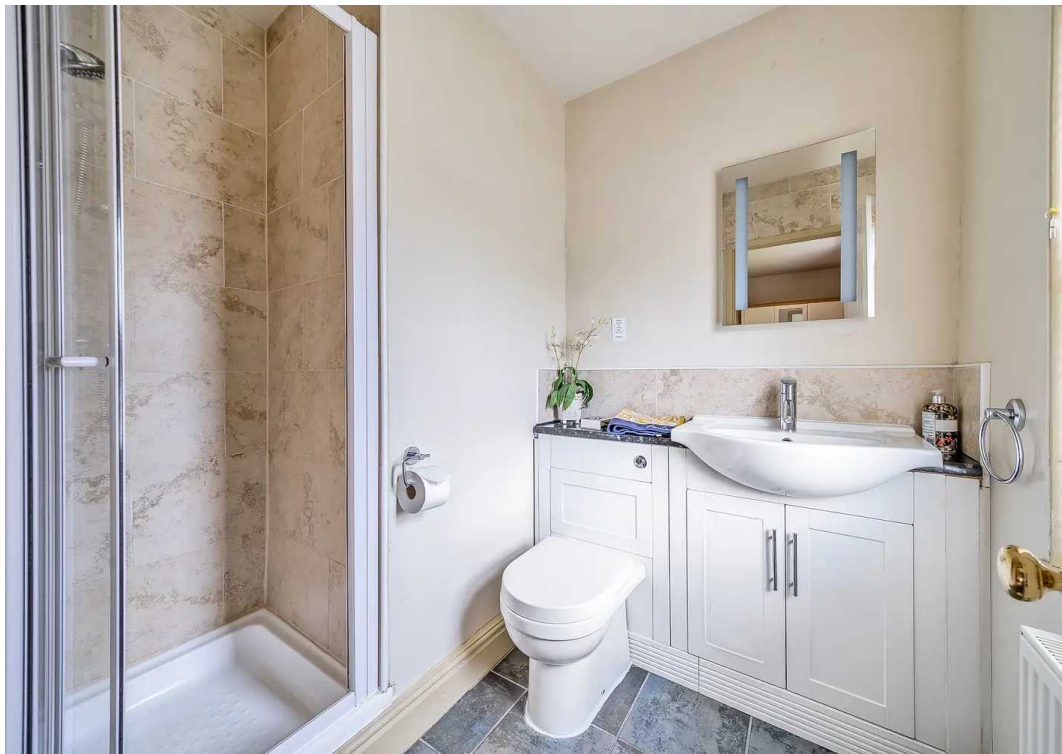
Council Tax band: C

Tenure: Freehold

- NO CHAIN
- MAGNIFICENT SURROUNDING COUNTRYSIDE
- 3 BEDROOMS 2 BATHROOMS
- IMMACULATELY PRESENTED THROUGHOUT
- IDEAL HOLIDAY LET
- LOW MAINTENANCE PATIO GARDEN
- PUB 5 MINUTES WALK
- CONVENIENCE STORE 6 MINUTES WALK
- PATELEY BRIDGE HIGH STREET 10 MINUTES WALK



MYRINGS



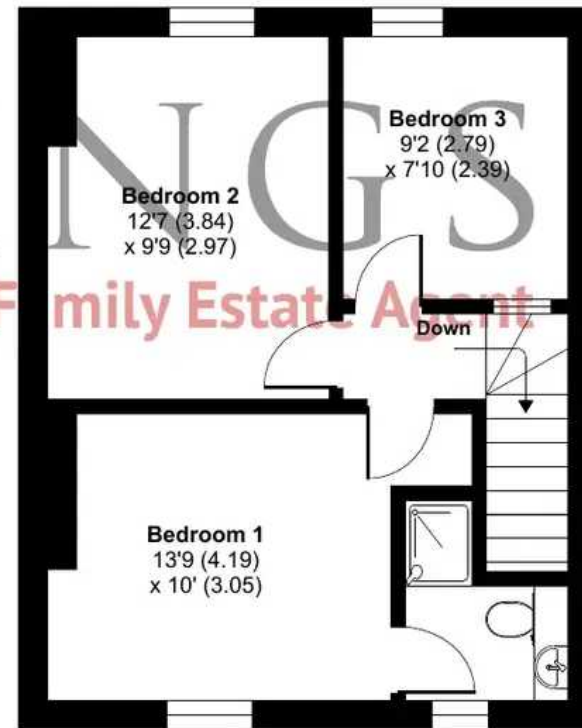
# Briardene, Beverley, Harrogate, HG3

Approximate Area = 907 sq ft / 84.3 sq m

For identification only - Not to scale



GROUND FLOOR



FIRST FLOOR







## Myrings Estate Agents

Myrings Estate Agents Ltd, 10 Princes Square - HG1 1LX

01423  
566400

• [enquiries@myringsestateagents.com](mailto:enquiries@myringsestateagents.com) • <http://myringsestateagents.com/>

Proud to support

**Martin House**  
Children's Hospice

Registered Charity No. 517919

Here when families need us most