



TO LET

**Lwr Grd E, Zetland
House, 5-25 Scrutton
Street, London, EC2A
4HJ**

3,565 sq ft

**Lower ground floor open
plan studio**



VIDEO TOUR

stirlingackroyd.com



Description

Comprising Unit E on the lower ground floor of Zetland House, a substantial Shoreditch warehouse conversion.

The premises is configured as an open plan workspace with glazed meeting rooms, large kitchen and break out areas, storage room and direct access to the goods lift. The space has excellent ceiling height and a very good level of natural light from a large glazed pitched skylight.

Air conditioned throughout and available by way of a lease assignment or a new lease by negotiation from the landlord.

Location

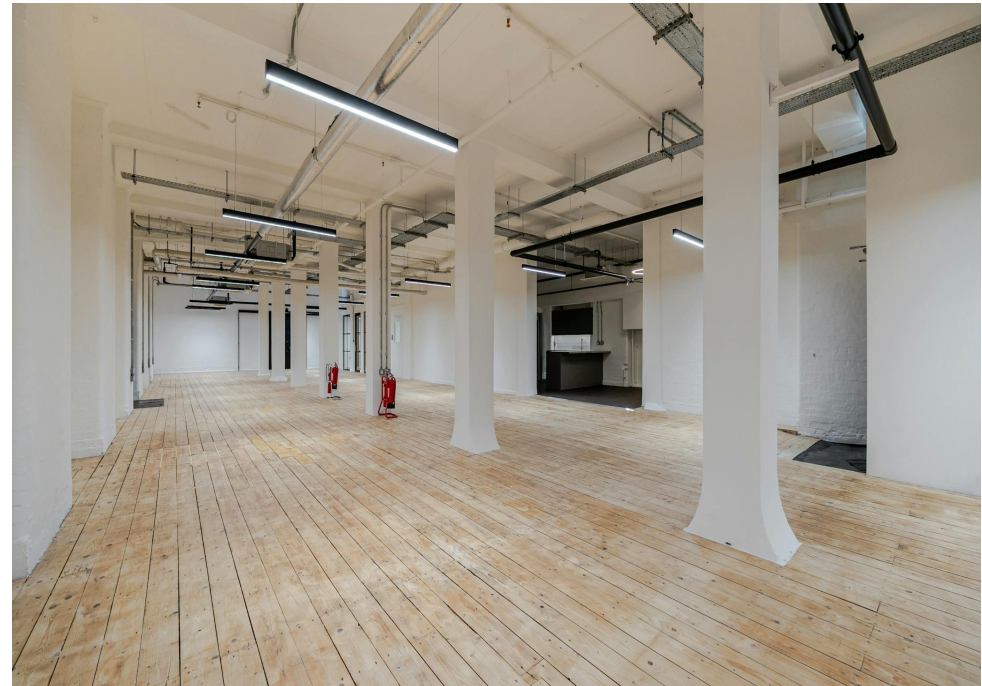
Zetland House is situated on Scrutton Street close to its junction with Paul Street and Clifton Street. A short walk to Liverpool Street allowing quick and easy access to the Elizabeth Line, Underground and National Rail lines.

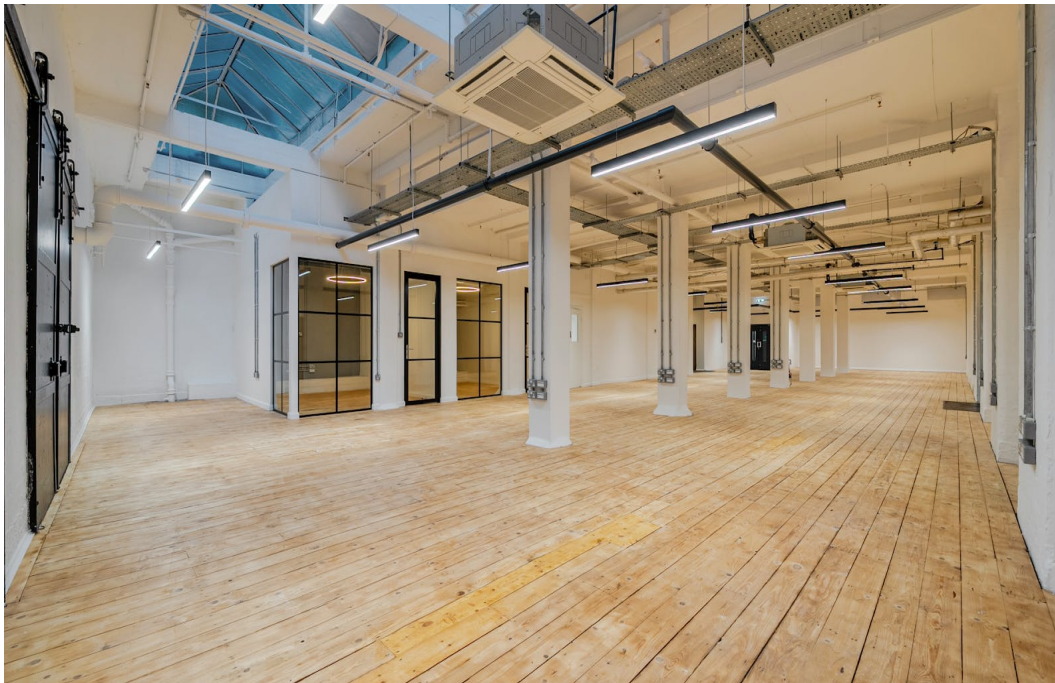
The area is surrounded by a number of restaurants, bars and coffee shops and also two street food markets on Leonard Circus and Clifton Street.

Zetland House is home to a number of creative occupiers and is dog friendly.

Key points

- Total space - 3,565 square feet
- Open plan
- Warehouse conversion
- Natural light from large glazed skylight
- Excellent ceiling height
- Large kitchen/break out area
- Goods lift
- Meeting rooms





Accommodation

Name	sq ft	sq m	Availability
Lower Ground	3,565	331.20	Available

Rents, Rates & Charges

Lease	New Lease
Rent	£35 per sq ft
Rates	£10 per sq ft
Service Charge	£4 per sq ft
VAT	Applicable
EPC	C (59)

Viewing & Further Information



Brett Sullings
020 3967 0103
07826547772
bretts@stirlingackroyd.com



Dimitri Melaisi
0203 911 3666
07940239327
dmelaisi@stirlingackroyd.com



Harry Mann
020 3967 0103
hmann@stirlingackroyd.com



Theo Beckford
0203 911 3666
07584253887
Tbeckford@stirlingackroyd.com

Joint Agents

Lucy Stephens (BELCOR)
07789 843729

Important Notice: Stirling Ackroyd (and their Joint Agents where applicable) for themselves and for the vendors or lessors of this property for whom they may or may not act, give notice that: (i) these particulars are a general outline only, for the guidance of prospective purchasers or tenants, and do not constitute the whole or any part of any offer or contract; (ii) Stirling Ackroyd cannot guarantee the accuracy of any description, dimensions, references to condition, necessary permissions for use and occupation and other details contained herein and prospective purchasers or tenants must rely on them as statements of fact or representations and must satisfy themselves as to their accuracy; (iii) no employee of Stirling Ackroyd (and their Joint Agency where applicable) has any authority to make or give any representation or warranty or enter into any contract whatever in relation to the property; (iv) rents, prices and premiums quoted in these particulars may be subject to VAT in addition; and (v) Stirling Ackroyd will not be liable, in negligence or otherwise, for any loss arising from the use of these particulars. Generated on 03/12/2025