

Love Homes



Manor Court, Manor Gardens, Westoning, MK45 5GB

Nestled in the scenic grounds of Westoning Manor, this remarkable three-bedroom family home offers flexible accommodation spread across two floors. With a charming village Church view and manicured greenery, it boasts a refined finish, inviting entrance, well-equipped kitchen, spacious living room, office space, serene garden, and convenient parking for two vehicles.



This property is presented by Duncan Stead - a Love Homes property expert with over 25 years' experience.

Find out more about this property by scanning the QR code.



.19m



3



2



2

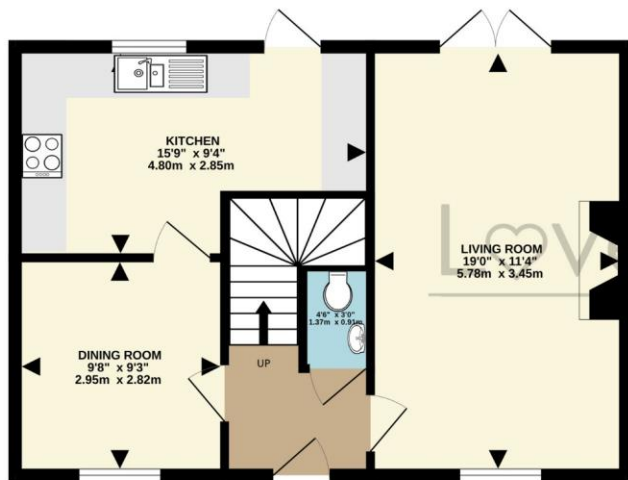
Tenure: Fleecehold Council Tax: E



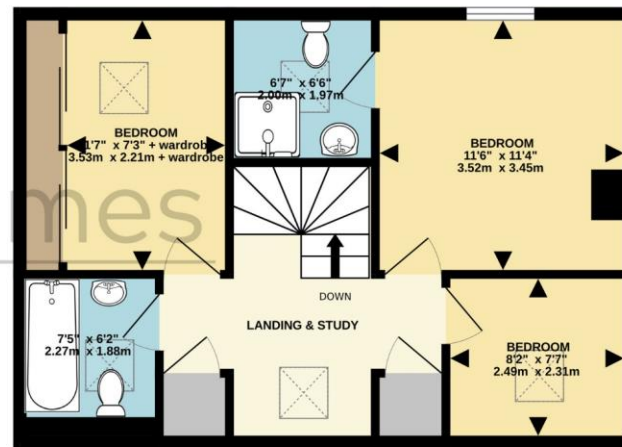
"Living in Westoning for the last 17 years has been an absolute joy - Our home, nestled in a quiet private estate, offers not just a house, but a haven of peace and serenity. With its unobstructed views and secluded charm, it's been our cherished retreat. If you're looking for a place with character and warmth, you've found it, this place feels like home in every sense. We hope you'll find as much solace and delight here as we have".



GROUND FLOOR
504 sq.ft. (46.8 sq.m.) approx.

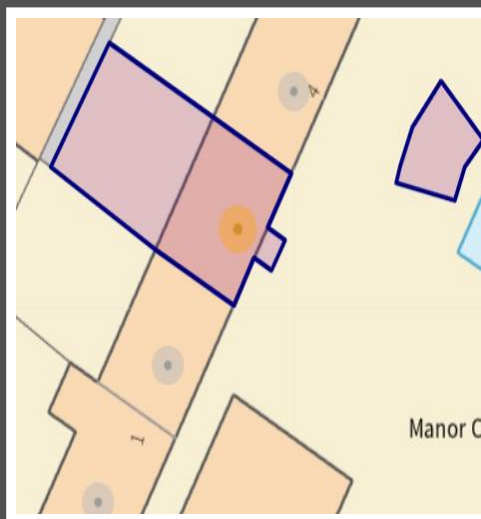


1ST FLOOR
505 sq.ft. (46.9 sq.m.) approx.



TOTAL FLOOR AREA : 1009 sq.ft. (93.7 sq.m.) approx.
Drawn by Love Homes for illustrative purposes only. Measurements and areas shown are approximate.
Made with Metropix ©2024

Score	Energy rating	Current	Potential
92+	A		
81-91	B		85 B
69-80	C	75 C	
55-68	D		
39-54	E		
21-38	F		
1-20	G		



These particulars are set out as a general outline in accordance with the Property Misdescriptions Act (1991) only for the guidance of intending purchasers or lessees, and do not constitute any part of an offer or contract. Details are given without any responsibility, and any intending purchasers, lessees or third parties should not rely on them as statements or representations of fact but must satisfy themselves by inspection or otherwise as to the correctness of each of them. We have not carried out a structural survey and the services, appliances and specific fittings have not been tested. All photographs, measurements, floor plans and distances referred to are given as a guide only and should not be relied upon for the purchase of carpets or any other fixtures or fittings. Gardens, roof terraces, balconies and communal gardens as well as tenure and lease details cannot have their accuracy guaranteed for intending purchasers. Lease details, service ground rent (where applicable) are given as a guide only and should be checked and confirmed by your solicitor prior to exchange of contracts. No person in the employment of Love Homes has any authority to make any representation or warranty whatever in relation to this property. Purchase prices, rents or other prices quoted are correct at the date of publication and, unless otherwise stated, are exclusive of VAT. We retain the copyright in all advertising material used to market this Property. All information is as advised by the seller and subject to change. Council tax bands can be subject to change by the local council.

5 The Russell Centre, Coniston Road, Flitwick, MK45 1QY
Tel: 01525 713111

Email: flitwick@lovehomes.uk

www.lovehomes.uk



Love Homes