

To Let 2 bed flat

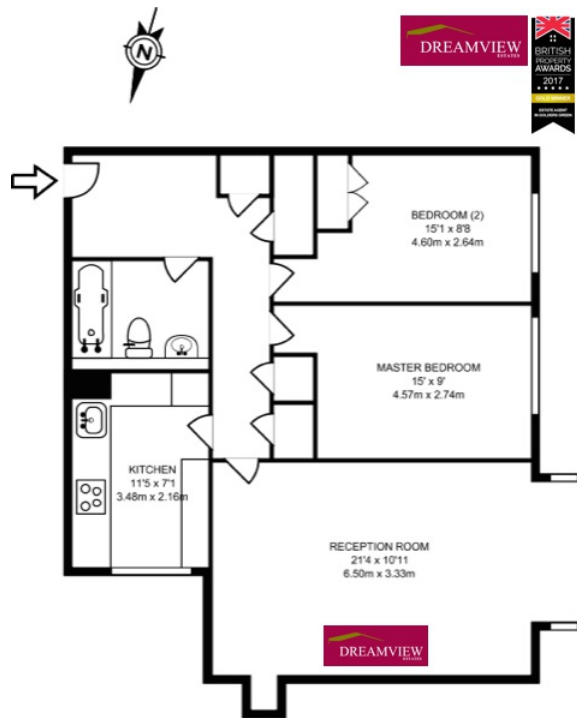


- › 2 BEDROOMS - 785 SQ FT/ 73 SQ MT
- › GROUND FLOOR FLAT
- › PURPOSE BUILT BLOCK
- › LARGE LOUNGE
- › NEWLY DECORATED AND GOOD CONDITION

TWO BEDROOM GROUND FLOOR FLAT TO LET IN HENDON CENTRAL







GROUND FLOOR GROSS INTERNAL FLOOR AREA  
785 SQ FT/72.95 SQ M

---

RAFFLES HOUSE, BRAMPTON GROVE, HENDON, NW4 4BU

DONT MISS THIS OPPORTUNITY!

2 BED FLAT ON GROUND FLOOR OF A PURPOSE BUILT BLOCK WITH LIFT IN VERY NICE MODERN CONDITION

\*KEY FEATURES:-

\*2 DOUBLE BEDROOMS

\*BATHROOM

\*LARGE LIVING/DINING ROOM

\*SEPARATE KITCHEN

\*RESIDENTS PARKING

\*NEWLY DECORATED

\*Situated within this popular purpose built block located on Brampton Grove is this well presented two double bedroom GROUND floor apartment with 2 bathrooms within walking distance of Hendon Central Tube Station, Brent Street shopping facilities and local amenities

\*Internally the property benefits from a separate kitchen, living/dining room, family bathroom and ample storage throughout.

\*There is a garage parking for residents and also communal gardens.

\*The flat has modern fittings and is well maintained with wooden floors having been newly decoarted



34 Golders Green Road, London NW11 8LL

murray@dreamviewstates.co.uk

020 8455 0055

best  
agent

\*Nearest stations

\*Hendon Central Tube - 0.3 miles

\*Hendon Rail Station - 0.6 miles

\*Brent Cross Tube Station - 1 miles

\*Council Tax Band E

\*EPC Band D

AVAILABLE 06/06/24



34 Golders Green Road, London NW11 8LL

[murray@dreamviewstates.co.uk](mailto:murray@dreamviewstates.co.uk)

020 8455 0055

best  
agent