

# THE CHADDOCK ELDERCOT PARK



3 | 

1 | 

1 | 



Artist's impression



Artist's impression

**Please note:** Full Brick and Half Brick/Half Render finishes are available for this house type

## KEY FEATURES

- One double bedroom & two single bedrooms
- Open plan kitchen/diner
- Separate lounge
- Integrated kitchen appliances
- Patio doors to garden
- Driveway parking



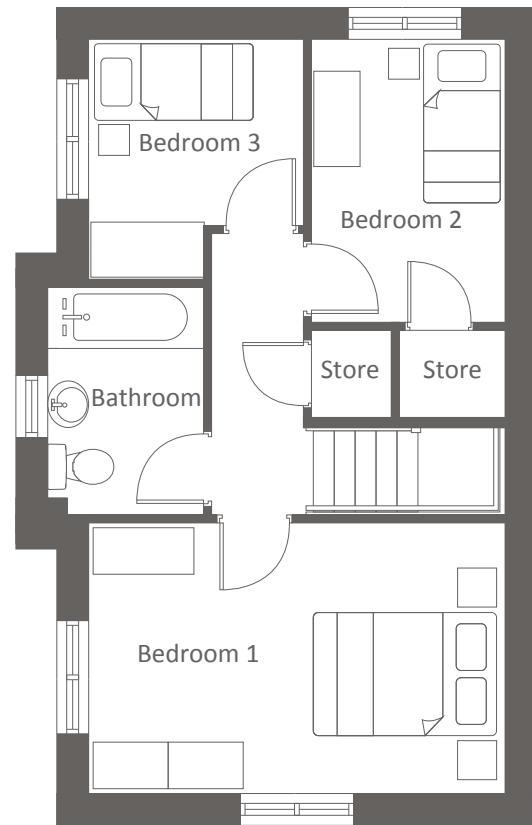
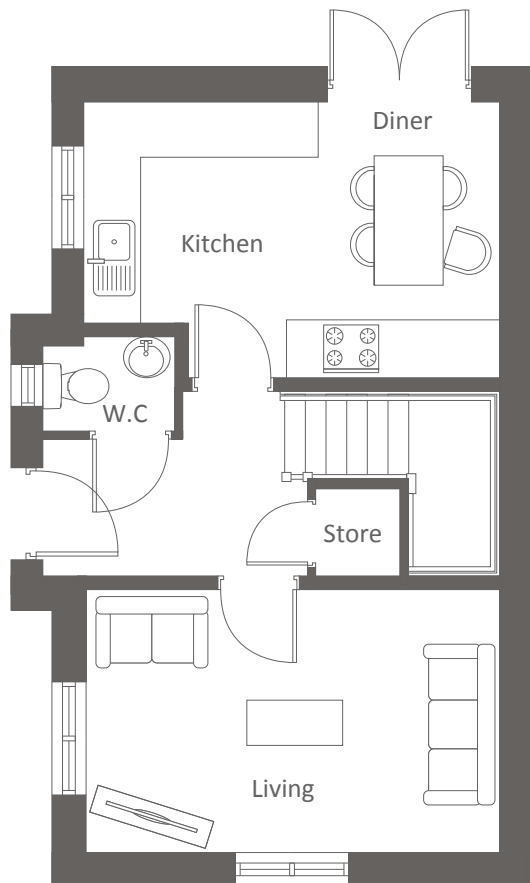
**The Chaddock**  
Shared Ownership plots  
3, 27, 47, 125, 130, 144,  
156, 184, 197, 201

Rent to Buy plots  
63, 83, 137, 163, 222,  
230

**ELDERCOT PARK, ELDERCOT ROAD, DAUBHILL, BOLTON, BL3 4JJ**  
A range of stylish 2, 3 & 4-bedroom houses

# THE CHADDOCK ELDERCOT PARK

3-bedroom, 4-person home





**Total size: 77 sq.m, 828 sq.ft**


Ground Floor	Metric	Imperial
Kitchen / Diner	3.0 x 4.5	9'4" x 14'7"
Living	4.5 x 2.9	14'7" x 9'8"
W.C.	1.4 x 1.0	4'5" x 3'2"


First Floor	Metric	Imperial
Bedroom 1	4.5 x 2.9	14'7" x 9'5"
Bedroom 2	2.1 x 3.1	6'11" x 10'3"
Bedroom 3	2.3 x 2.6	7'5" x 8'5"
Bathroom	1.7 x 2.5	5'5" x 8'4"


CONTACT OUR TEAM

 01204 895 684

 [yourhousinggroup.co.uk](http://yourhousinggroup.co.uk)

 @yourhousinggroup

 @Your\_Housing

 @yourhousing