

21 Beamish Close

North Weald, Epping

Effortless and simply sublime, this four bedroom family home provides the perfect blank canvas for you to move straight in. Sitting amongst the wonderful community of North Weald, this is a lovely spot to be.

Council Tax band: C

Tenure: Freehold

- OFF ROAD PARKING
- EXTENDED KITCHEN / DINER
- SEPERATE UTILITY
- LARGE REAR GARDEN
- NEUTRAL INTERIORS
- GOOD SIZE FAMILY BATHROOM
- CLOSE TO ST ANDREWS PRIMARY
- DOWNSTAIRS WC



Porch

Hall

Wc

6' 9" x 3' 9" (2.06m x 1.15m)

Family Area

13' 1" x 11' 2" (3.99m x 3.40m)

Utility

9' 2" x 4' 1" (2.80m x 1.24m)

Kitchen/Dining Area

20' 2" x 10' 3" (6.15m x 3.12m)

Lounge Area

17' 6" x 9' 10" (5.34m x 3.00m)

Bedroom 1

12' 0" x 10' 4" (3.66m x 3.15m)

Bedroom 2

11' 10" x 10' 8" (3.61m x 3.25m)

Bedroom 3

11' 3" x 8' 7" (3.44m x 2.62m)

Bedroom 4

6' 4" x 6' 2" (1.94m x 1.89m)

Bathroom

7' 9" x 5' 7" (2.35m x 1.71m)

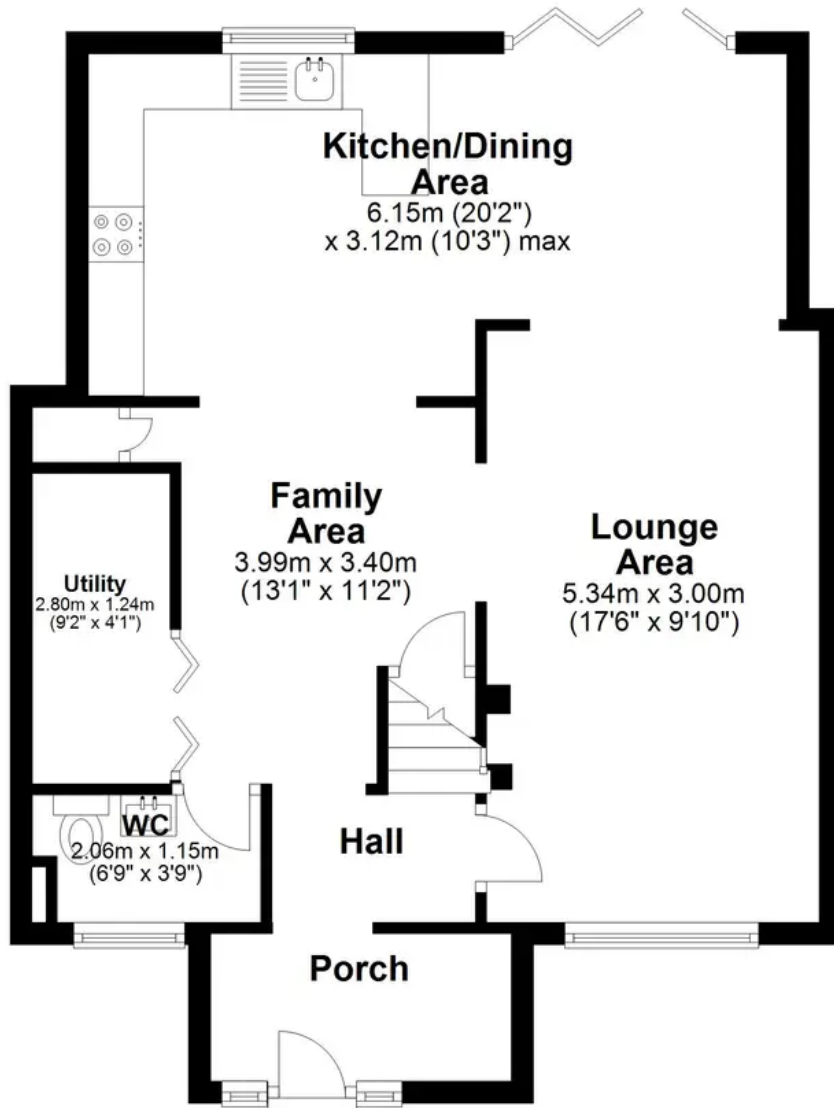






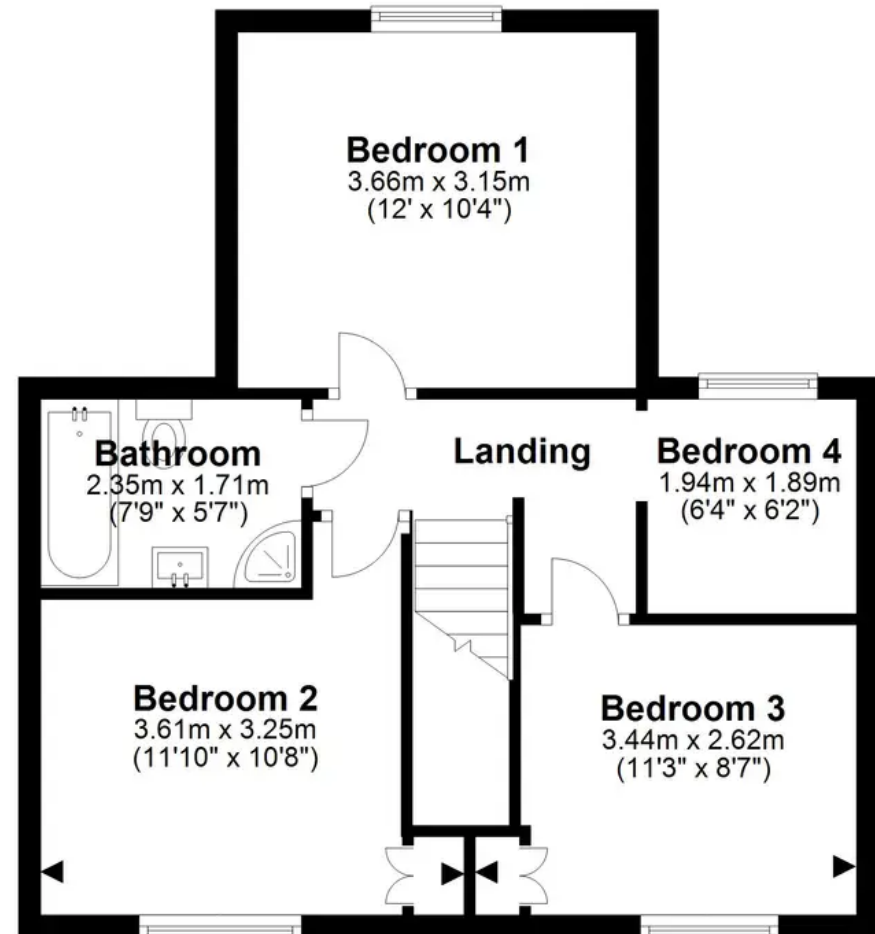
Ground Floor

Approx. 56.6 sq. metres (609.1 sq. feet)



First Floor

Approx. 45.2 sq. metres (486.9 sq. feet)



Total area: approx. 101.8 sq. metres (1095.9 sq. feet)