

THE WINCHESTER

3 BEDROOM END TERRACE & SEMI DETACHED HOMES



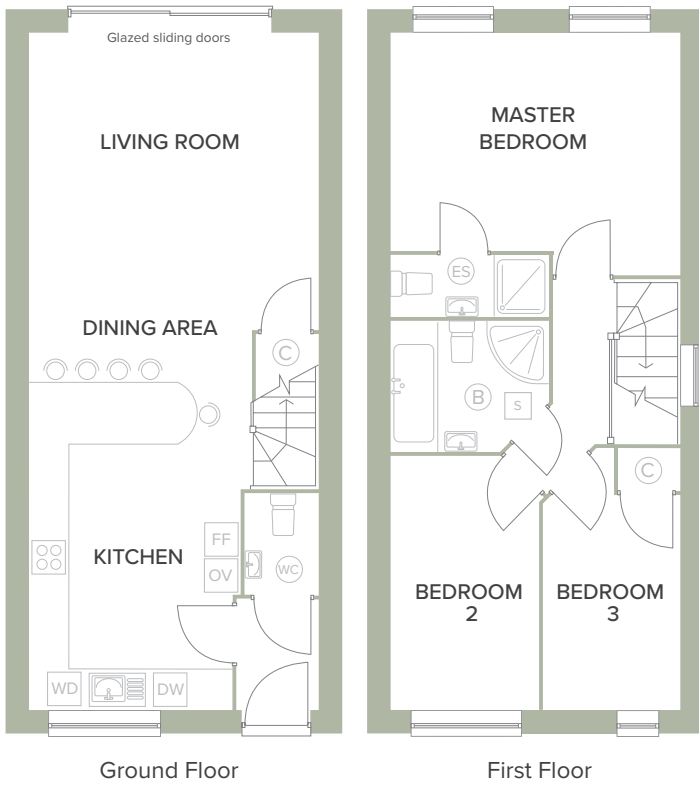
GOOD TO KNOW

- Development for private ownership
- Excellent road, bus & rail links
- Flexible, open plan living spaces with full width glazed sliding doors
- Contemporary kitchens featuring integrated appliances with extended warranties
- 10-year ICW build warranty
- Off-road parking for each home & communal visitors spaces
- Money-saving energy efficient air source heat pump system
- Beautifully designed interiors
- Fully fitted luxurious en-suite to master bedroom
- Fully fitted luxury bathrooms
- Landscaped nature-friendly grounds & private gardens
- Development features far reaching views across the South Coast
- Range of great schools nearby
- Electric car charging facilities (to specific plots only)

THE WINCHESTER

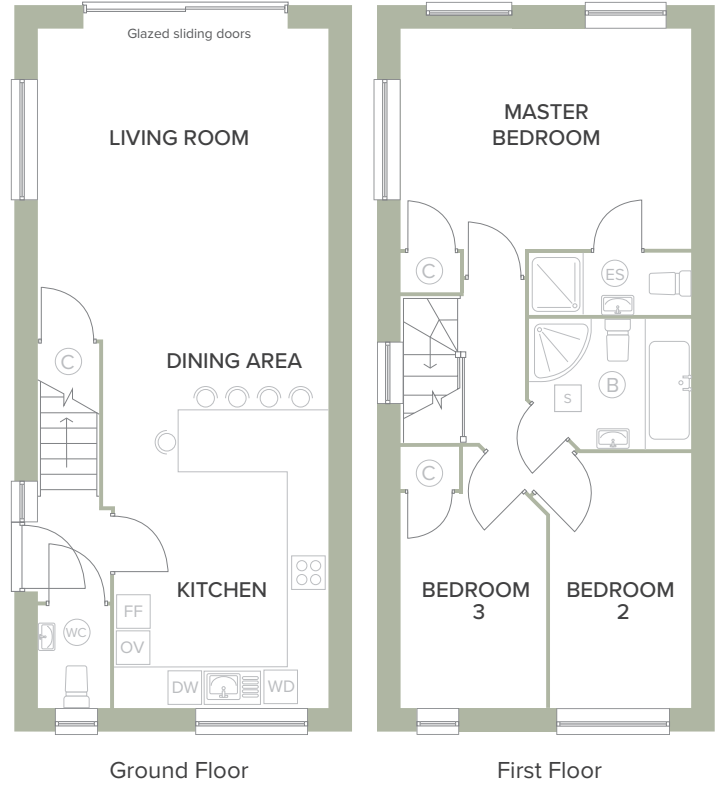
3 BEDROOM END TERRACE & SEMI DETACHED HOMES

END TERRACE & SEMI DETACHED 936 SQFT



PLOTS 1, 4 & 9
PLOTS 17, 18, 24 & 25

END TERRACE 936 SQFT



PLOT 6

THE WINCHESTER ROOM DIMENSIONS	
Living Room/Dining	4.4m x 5.45m (14'6" x 17'10")
Kitchen	3.4m x 4.55m (11'2" x 15'0")
Master Bedroom	4.4m x 3.6m (14'6" x 11'9")
Bedroom 2	2.3m x 3.8m (7'6" x 12'6")
Bedroom 3	2.1m x 3.9m (6'10" x 12'9")

THE WINCHESTER ROOM DIMENSIONS	
Living Room/Dining	4.4m x 5.45m (14'6" x 17'10")
Kitchen	3.4m x 4.55m (11'2" x 15'0")
Master Bedroom	4.4m x 3.6m (14'6" x 11'9")
Bedroom 2	2.3m x 3.8m (7'6" x 12'6")
Bedroom 3	2.1m x 3.9m (6'10" x 12'9")

KEY		
(B) Bathroom	(FF) Fridge Freezer	(WC) Toilet
(C) Cupboard	(Hob & Extractor)	(WD) Washer Dryer
(DW) Dishwasher	(OV) Double Oven	(S) Skylight

THE WINCHESTER

3 BEDROOM END TERRACE & SEMI DETACHED HOMES

SEMI DETACHED 953 SQFT

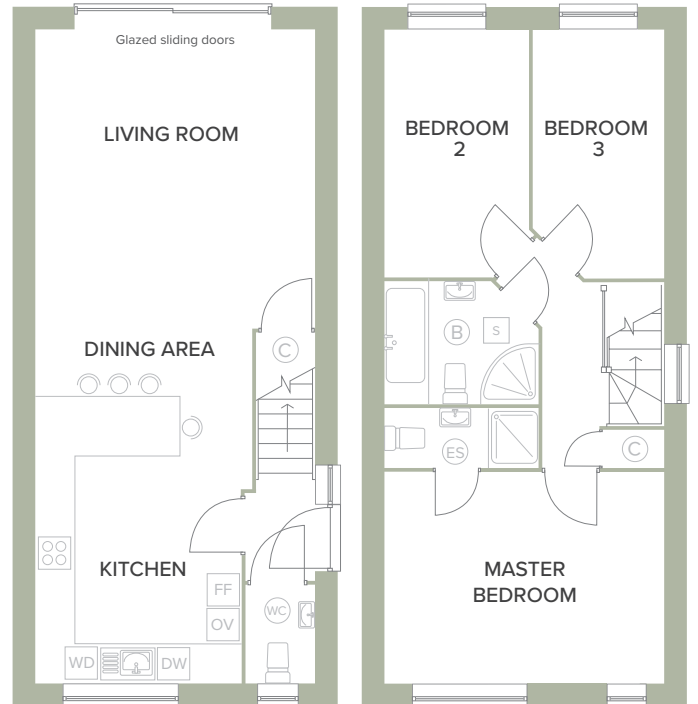


Ground Floor

First Floor

PLOT 7

SEMI DETACHED 936 SQFT



Ground Floor

First Floor

PLOTS 22, 23, 26 & 27

THE WINCHESTER ROOM DIMENSIONS

Living Room/Dining	5m (max) x 5.45m (16'4" x 17'10")
Kitchen	3.4m x 4.55m (11'2" x 15'0")
Master Bedroom	5m (max) x 3.2m (16'4" x 10'6")
Bedroom 2	2.2m x 3.9m (7'3" x 12'9")
Bedroom 3	2.15m x 3.8m (7'0" x 12'6")

THE WINCHESTER ROOM DIMENSIONS

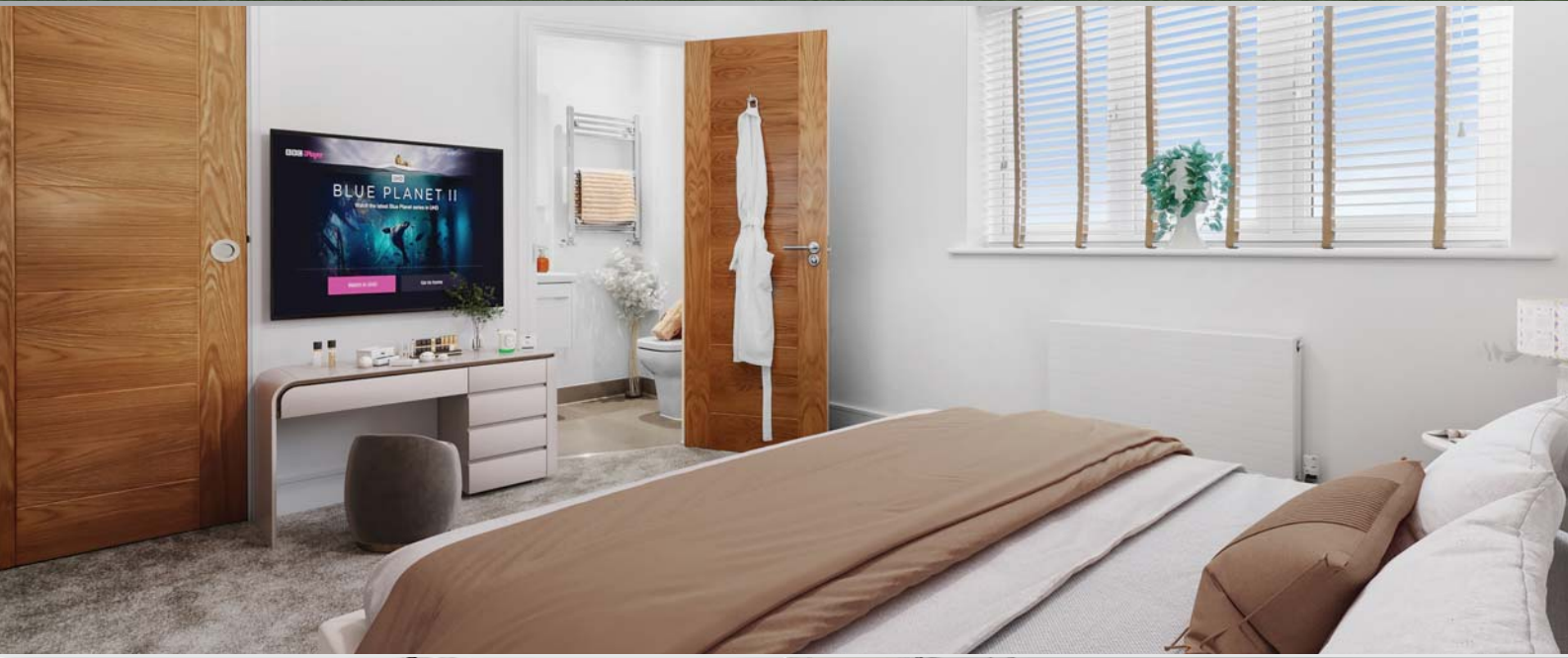
Living Room/Dining	4.4m x 5.45m (14'6" x 17'10")
Kitchen	3.4m x 4.55m (11'2" x 15'0")
Master Bedroom	4.4m x 3.2m (14'6" x 10'6")
Bedroom 2	2.3m x 3.8m (7'7" x 12'6")
Bedroom 3	2.1m x 3.8m (6'10" x 12'6")

KEY

(B) Bathroom	(FF) Fridge Freezer	(WC) Toilet
(C) Cupboard	(Hob & Extractor)	(WD) Washer Dryer
(DW) Dishwasher	(OV) Double Oven	(S) Skylight

THE WINCHESTER

3 BEDROOM END TERRACE & SEMI DETACHED HOMES



THE
PARK LANE GROUP

Call **01424 448999**
to arrange a viewing

Woodhurstgrove.com

The Park Lane Group strives to constantly improve the design and construction of its properties. As a result, alterations take place from time to time which may lead to differences between the properties and brochure descriptions. Whilst we endeavour to be accurate, our marketing material does not provide an infallible guide to actual specifications. For sales purposes, the choice of kitchen finishes is only available for early reservations.

Distances and travelling times are for guidance only and should not be relied upon. Artists' impressions, illustrations and photographs are purely indicative and may not be wholly representative.

We therefore advise the interior and exterior specifications are verified with our representative or selling agent.

Please also note that this information does not constitute part of a contract or a warranty.

