

Head Office:

1 Penn Court
Station Road
West Moors
Dorset
BH22 0JJ

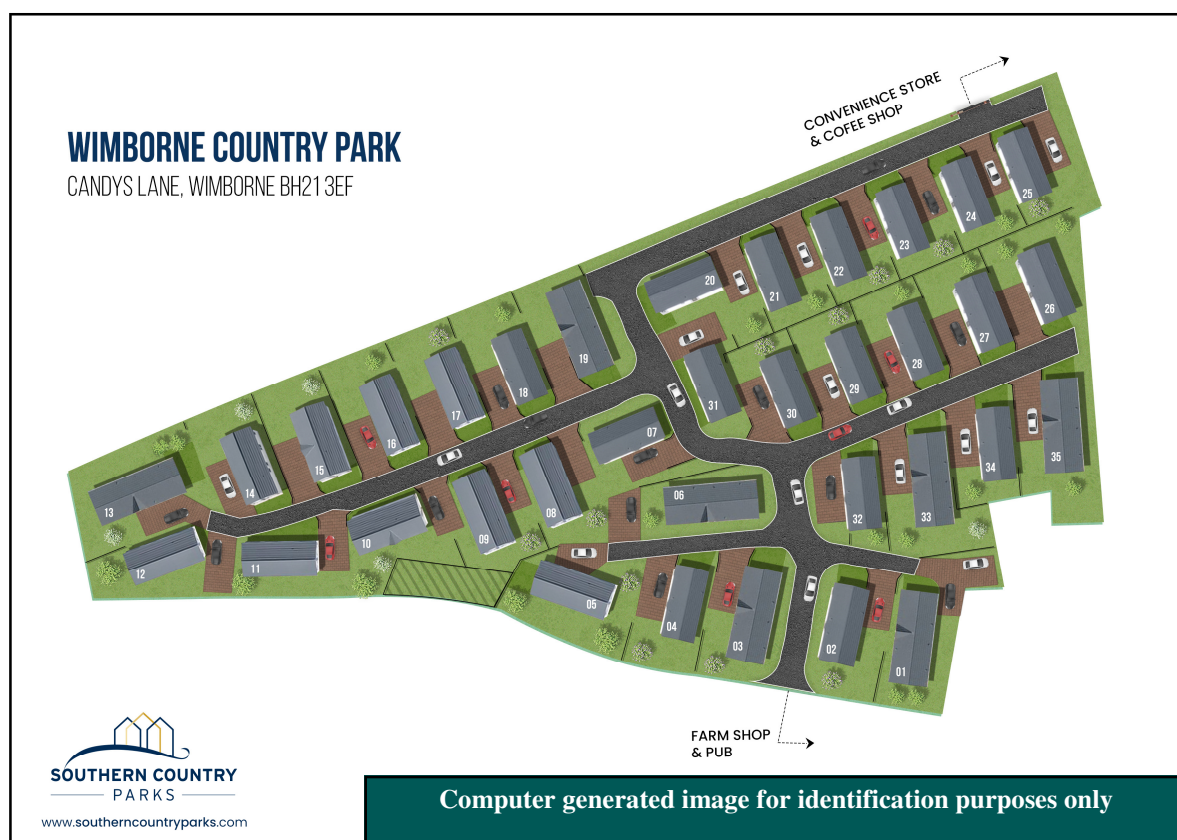
Tel: 01202 877511

Email: info@dorsetparkhomes.com



DORSET PARK HOMES

Wimborne Country Park



**A Collection of 35 Luxury Park Homes
on a New 'Gated' Residential Park**

Wimborne Country Park **A small, Gated Residential Development**

Set between the historic town of Wimborne & the popular village of Corfe Mullen, this exclusive Residential Park Home development is the proud concept of site owners Southern Country Parks Ltd, who wish to create a high quality estate of bungalow style properties for the over 45's. Substantial works has gone into the design and infrastructure of this park which is accessed via secure electric gates.

10 of the 35 high quality Park Homes are already occupied. All plots have 'on-plot' parking. Some homes have far reaching views over 'greenbelt' fields and the Park Home designs will take full advantage of this special feature.

- **Full Residential Licence—essential for all year living**
- **Pet Friendly—simple conditions apply—please enquire for more information**
- **Parking—'On-Plot' —no commercial vehicles allowed**
- **Mains Electricity, Gas, Water & BT high speed broadband in each home**
- **Council Tax Band 'B'**
- **Age Restriction 45 plus: Visitors under the age restriction can come to visit for days out & short holidays**
- **Pitch Fee £301.58 per month**
- **No Stamp Duty**
- **Convenience Store, Coffee Shop & Local Pub close by**

Home Exchange Scheme & Assisted Move Available

Subject to terms & conditions

A five star Residential high quality development, setting the standard for Park Home developments. Easy access to the New Forest and the stunning Dorset coast making Wimborne Country Park an ideal location. All homes will be energy efficient, come with an outstanding specification and complete with landscape plot.

Viewing by Appointment Only Telephone: 01202 877511





- Superb Kitchen - integrated appliances
- Large Lounge/Dining Room
- 2 Double Bedrooms
- En-Suite Shower Room
- Bathroom
- Gas Central Heating & Double-Glazing
- Parking on Plot

Plot 18 £275,000

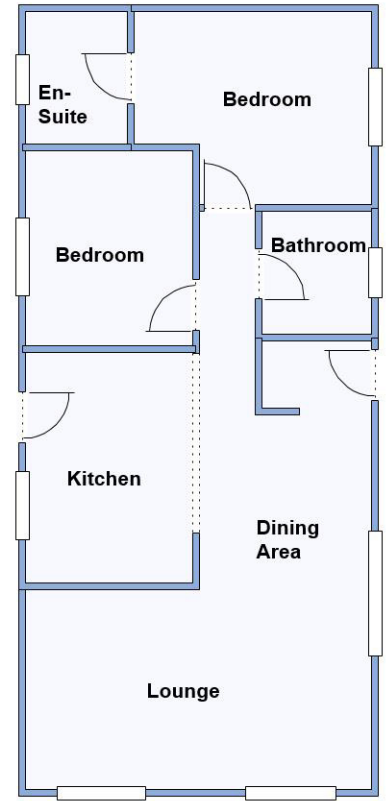
Plot 21, 22, 23 & 24 Price £279,500

Plot 12: £296,000

Plot 27: £289,500

Plot 31: £296,000

Plot 34: £292,500



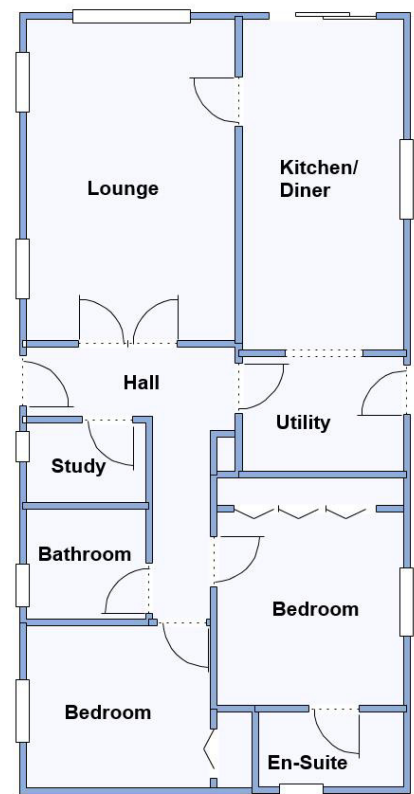
This drawing has been prepared for diagrammatic purposes only. Not to scale

Stylish Interior Designs & Fully Furnished



- Hall with Study
- Spacious Lounge
- Kitchen/Diner—Integrated appliances
- Utility Room
- 2 Double Bedrooms
- En-Suite Shower Room
- Luxury Bathroom
- Gas Central Heating & Double-Glazing
- Block Driveway & Large deck

Price £ 319,500



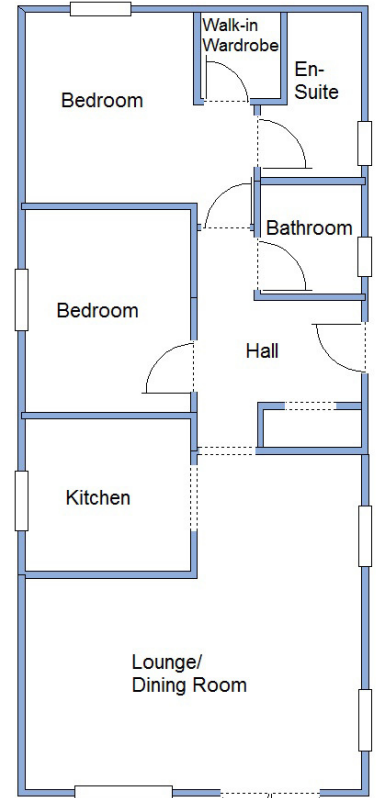
This drawing has been prepared for diagrammatic purposes only. Not to scale

IMPORTANT NOTE: These particulars are believed to be correct but their accuracy is not guaranteed. They do not form part of any contract. Nothing in these particulars shall be deemed to be a statement that the property is in good structural condition or otherwise, nor that any of the services, appliances, equipment or facilities are in good working order or have been tested. Purchasers should satisfy themselves on such matters prior to purchase.



- Superb Kitchen - including appliances
- Lounge/Dining Room, doors to garden
- 2 Double Bedrooms (Bedroom 1 with walk-in wardrobe)
- En-Suite Shower Room
- Bathroom
- Far Reaching Countryside Views!
- Ready for immediate occupation

Price: Plots 28 & 29 £285,500
Plot 32 £278,000



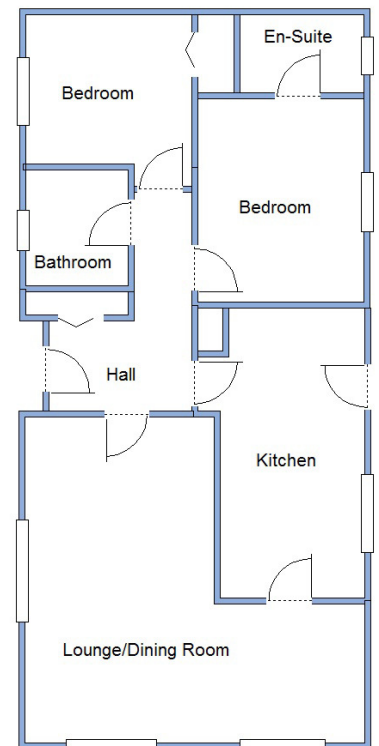
This drawing has been prepared for diagrammatic purposes only. Not to scale

Stylish Interior Designs & Fully Furnished



- Hall
- Spacious Lounge/Dining Room
- Kitchen—Integrated appliances
- 2 Double Bedrooms
- En-Suite Shower Room
- Luxury Bathroom
- Gas Central Heating & Double-Glazing
- Block Driveway

Plot 8 Price £310,500
Plot 9 Price £315,500



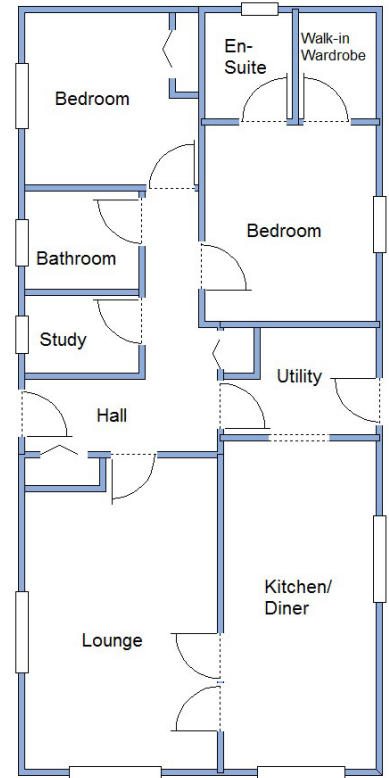
This drawing has been prepared for diagrammatic purposes only. Not to scale

IMPORTANT NOTE: These particulars are believed to be correct but their accuracy is not guaranteed. They do not form part of any contract. Nothing in these particulars shall be deemed to be a statement that the property is in good structural condition or otherwise, nor that any of the services, appliances, equipment or facilities are in good working order or have been tested. Purchasers should satisfy themselves on such matters prior to purchase.



- Superb Kitchen/Diner inc: appliances
- Utility Room & Study
- Lounge
- 2 Double Bedrooms (Bedroom 1 with walk-in wardrobe)
- En-Suite Shower Room
- Bathroom
- Parking on Plot
- Ready for immediate occupation

Price: £295,000



This drawing has been prepared for diagrammatic purposes only. Not to scale

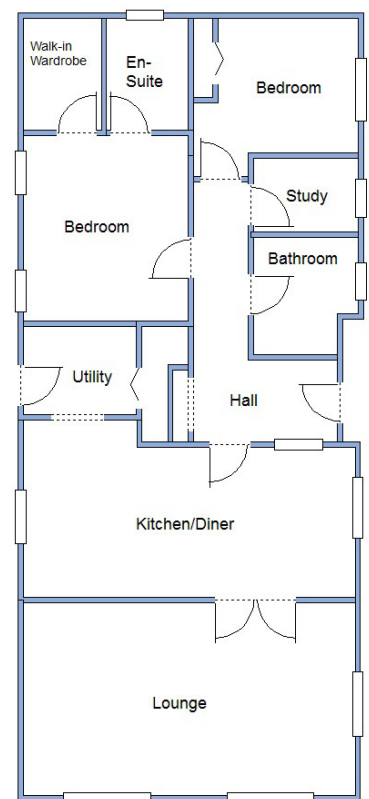
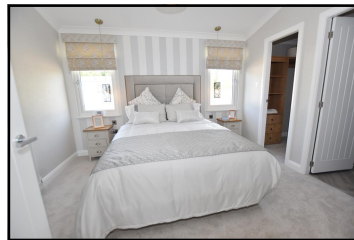
Stylish Interior Designs & Fully Furnished



- Spacious Hall
- Large Lounge with Vaulted Ceiling
- Kitchen/Diner—Integrated appliances
- Study
- 2 Double Bedrooms
- En-Suite Shower Room
- Luxury Bathroom
- Gas Central Heating & Double-Glazing
- Block Driveway

Price £360,000

Reserved



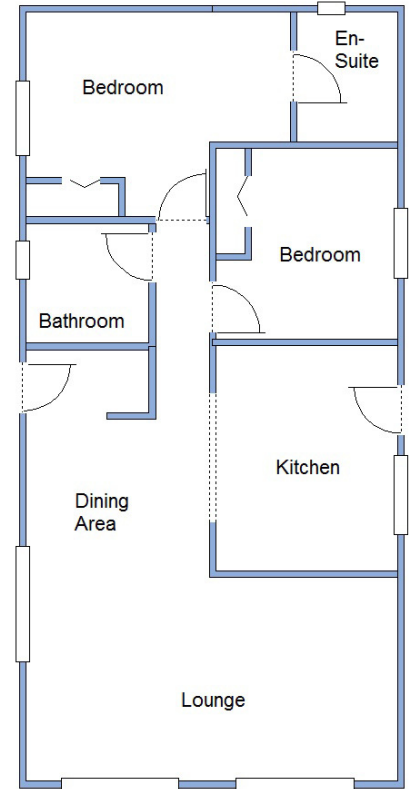
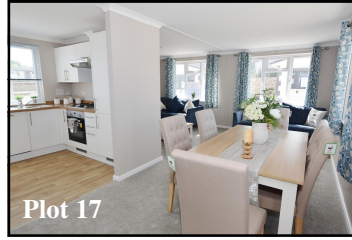
This drawing has been prepared for diagrammatic purposes only. Not to scale

IMPORTANT NOTE: These particulars are believed to be correct but their accuracy is not guaranteed. They do not form part of any contract. Nothing in these particulars shall be deemed to be a statement that the property is in good structural condition or otherwise, nor that any of the services, appliances, equipment or facilities are in good working order or have been tested. Purchasers should satisfy themselves on such matters prior to purchase.



- **Superb Kitchen - including appliances**
- **Lounge/Dining Room**
- **2 Double Bedrooms**
- **En-Suite Shower Room**
- **Bathroom**
- **Countryside Views!**
- **Ready for immediate occupation**

Price: Plot 14 £265,000
Plot 17 £265,000



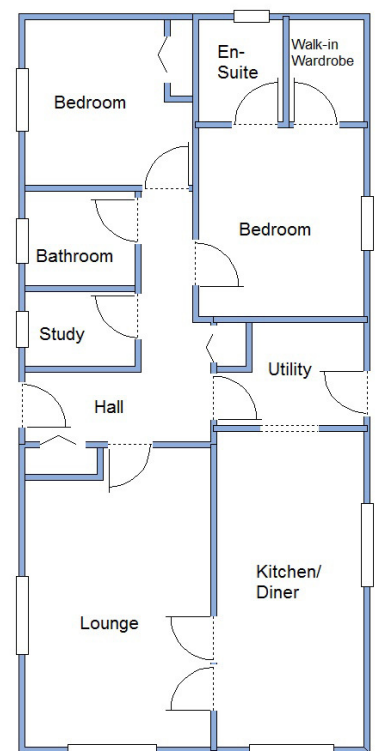
This drawing has been prepared for diagrammatic purposes only. Not to scale

Stylish Interior Designs & Fully Furnished



- **Hall**
- **Spacious Lounge**
- **Superb Kitchen/Diner inc: appliances**
- **Study**
- **2 Double Bedrooms**
- **En-Suite Shower Room**
- **Luxury Bathroom**
- **Gas Central Heating & Double-Glazing**
- **Block Driveway**

Price £319,500



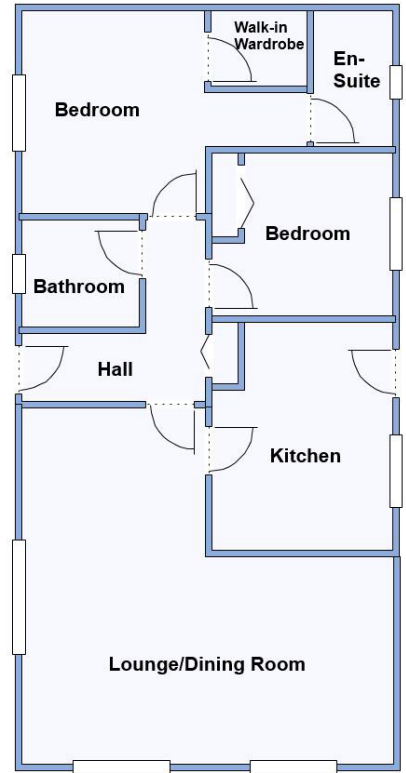
This drawing has been prepared for diagrammatic purposes only. Not to scale

IMPORTANT NOTE: These particulars are believed to be correct but their accuracy is not guaranteed. They do not form part of any contract. Nothing in these particulars shall be deemed to be a statement that the property is in good structural condition or otherwise, nor that any of the services, appliances, equipment or facilities are in good working order or have been tested. Purchasers should satisfy themselves on such matters prior to purchase.



- **Superb Kitchen - including appliances**
- **Lounge/Dining Room**
- **2 Double Bedrooms**
- **En-Suite Shower Room**
- **Bathroom**
- **Parking on plot**
- **Ready for immediate occupation**

Price: Plot 7 £296,000
 Plot 10 £305,500
 Plot 20 £299,500



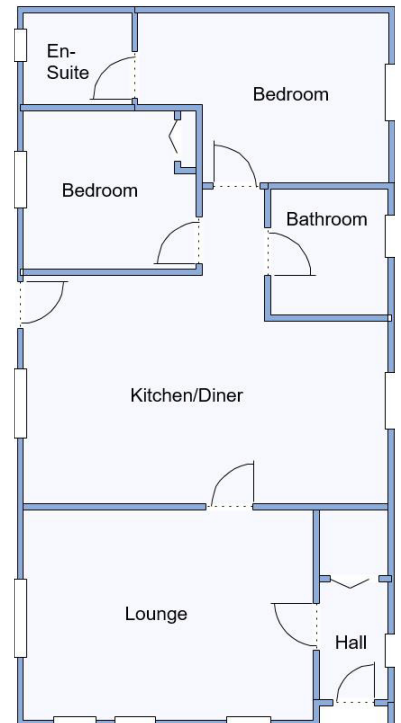
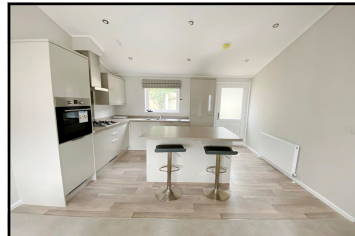
This drawing has been prepared for diagrammatic purposes only. Not to scale

Stylish Interior Designs & Fully Furnished



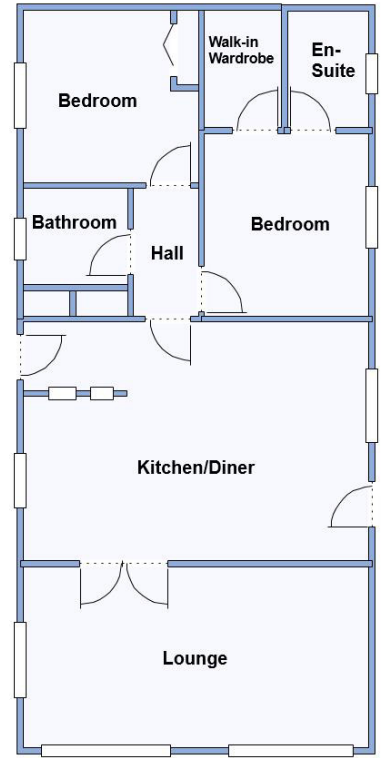
- **Hall**
- **Spacious Lounge**
- **Superb Kitchen/Diner inc: appliances**
- **2 Double Bedrooms**
- **En-Suite Shower Room**
- **Luxury Bathroom**
- **Gas Central Heating & Double-Glazing**
- **Block Driveway**

Price £312,000



This drawing has been prepared for diagrammatic purposes only. Not to scale

IMPORTANT NOTE: These particulars are believed to be correct but their accuracy is not guaranteed. They do not form part of any contract. Nothing in these particulars shall be deemed to be a statement that the property is in good structural condition or otherwise, nor that any of the services, appliances, equipment or facilities are in good working order or have been tested. Purchasers should satisfy themselves on such matters prior to purchase.



- Superb Kitchen/Diner - inc. appliances
- Lounge
- 2 Double Bedrooms
- En-Suite Shower Room
- Bathroom
- Parking on plot
- Ready for immediate occupation

Price: £319,500

This drawing has been prepared for diagrammatic purposes only. Not to scale

Stylish Interior Designs & Fully Furnished



Viewing by
Appointment Only
Telephone:
01202 877511

DORSET
PARK HOMES

IMPORTANT NOTE: These particulars are believed to be correct but their accuracy is not guaranteed. They do not form part of any contract. Nothing in these particulars shall be deemed to be a statement that the property is in good structural condition or otherwise, nor that any of the services, appliances, equipment or facilities are in good working order or have been tested. Purchasers should satisfy themselves on such matters prior to purchase.