



6 Eriswell Crescent, Burwood Park. KT12 5DS

£12,000 pcm

GROSVENOR
SURREY



6 Eriswell Crescent

Burwood Park, KT12 5DS

Located in the exclusive Burwood Park Estate is this immaculate and welcoming four bedroom home.

The front door leads into a light and open hallway giving access to all of the main areas on this floor. The wonderful open-plan kitchen and lounge/dining room is the heart of the home and is great space for entertaining. Windows and French doors leading out to the garden create flow to the outdoors. The former garage has been converted to a fabulous cinema room and there's also a utility accessed from the kitchen and a study to the front of the property.

The formal reception room has an abundance of light from triple aspect windows and French doors leading out to the garden. The décor is subtle and the wood burner provides a focal point within the room. Across the hall is the large home office equipped with

On the first floor is the impressive principle bedroom suite with fitted dressing room and equipped with a luxury bathroom suite. There are a further three double bedrooms all with built in wardrobes and two well-appointed bathrooms.

The property is offered on a furnished basis which enables international tenants the ease of moving.

EPC Rating C







Grosvenor Surrey - Cobham

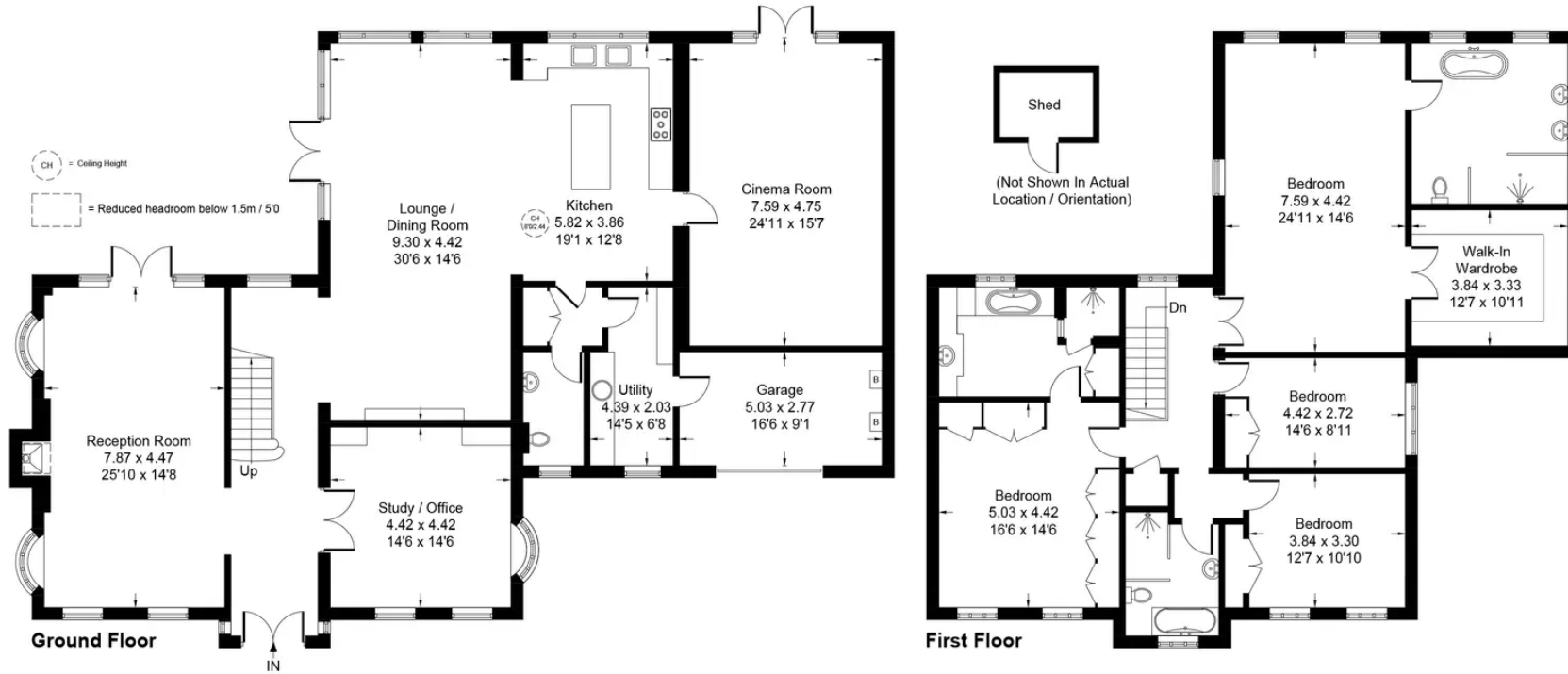
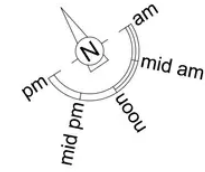
Grosvenor Surrey, 8 High Street, Cobham - KT11 3DY

01932 588288 · cobham@wearegrosvenor.co.uk · <http://www.wearegrosvenor.co.uk>

GROSVENOR
SURREY

Eriswell Crescent, Hersham, Walton-On-Thames, KT12

Approximate Gross Internal Area = 366.0 sq m / 3940 sq ft
(Excluding Shed & Including Garage)



Floor plan produced in accordance with RICS Property Measurement Standards incorporating International Property Measurement Standards (IPMS2 Residential).
Produced for Grosvenor Surrey & by IDENTIKA LTD

Grosvenor Surrey - Cobham

Grosvenor Surrey, 8 High Street, Cobham - KT11 3DY

01932 588288 · cobham@wearegrosvenor.co.uk · <http://www.wearegrosvenor.co.uk>

GROSVENOR
SURREY