



Armitage Drive, Wantage

Wantage

Simpsons

The Proactive Agent

Offers Over £395,000



SCAN THE
QR CODE
FOR DETAILS



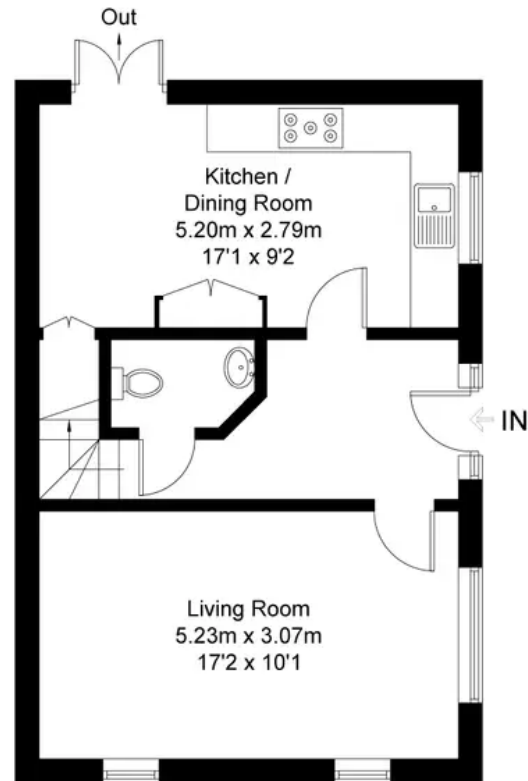


Armitage Drive, OX12

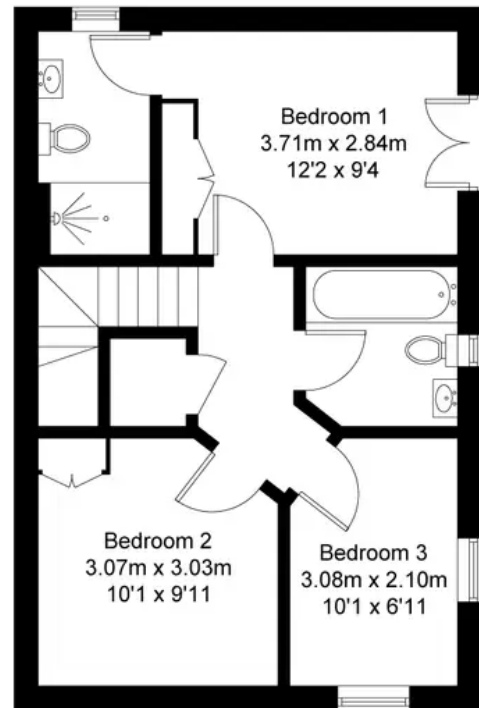
Approximate Gross Internal Area = 86.6 sq m / 932 sq ft

Garden / Driveway Area = 183.2 sq m / 1972 sq ft

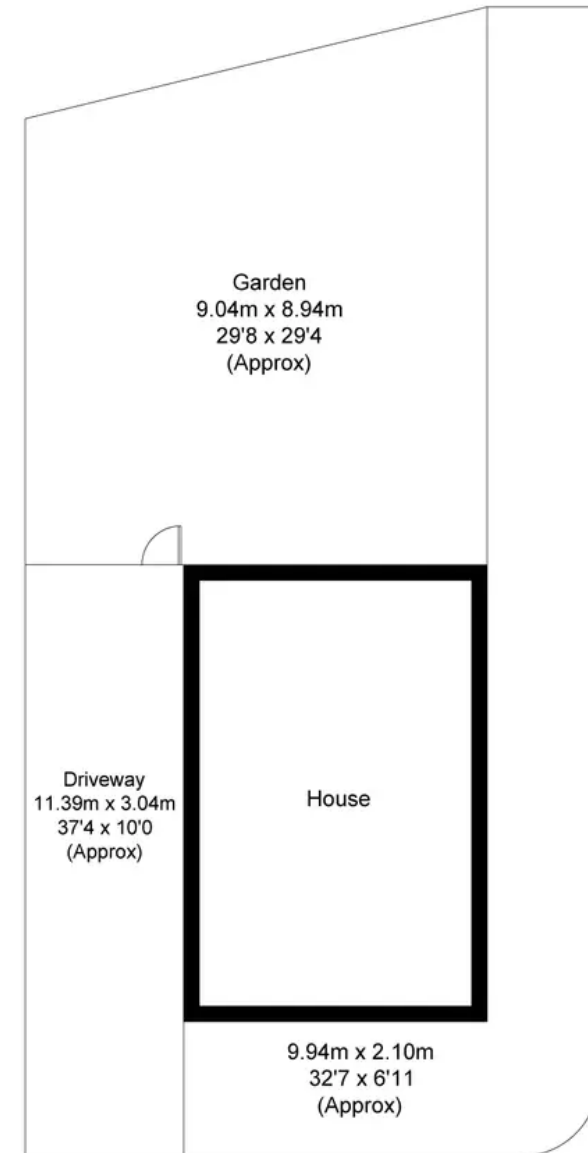
For identification only - Not to scale



Ground Floor



First Floor



Armitage Drive

Wantage, Wantage

A well-presented three bedroom detached home built in 2019 by St Modwen homes on the edge of Charlton Village and walking distance to local amenities and Schools.

Council Tax band: E

Tenure: Freehold

- Off Street Parking For Multiple Cars
- Built In 2019 By St Modwen Homes
- South West Facing Rear Garden
- Master Bedroom With En-suite Shower Room
- Solar Panels



SCAN THE
QR CODE
TO BOOK
YOUR VIEWING



