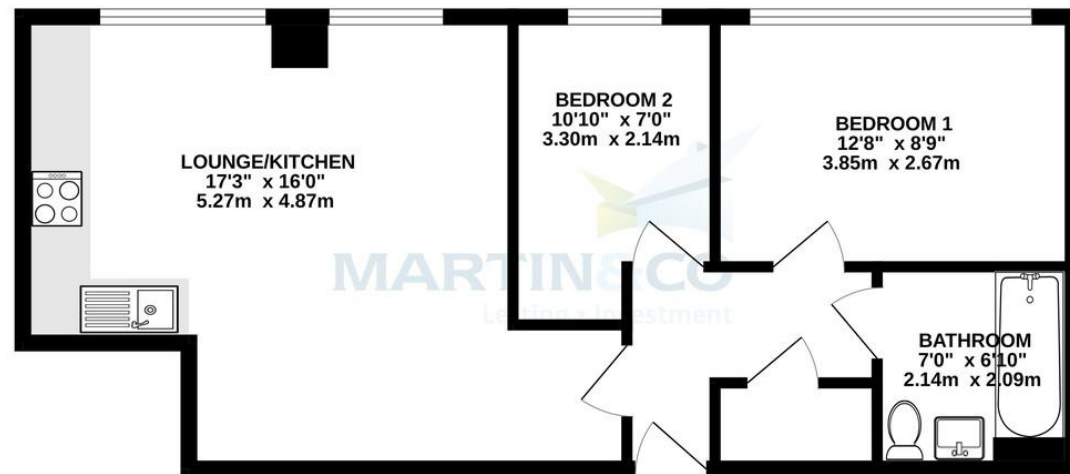


TYPE 9 - MARTIN & CO
557 sq.ft. (51.7 sq.m.) approx.



TOTAL FLOOR AREA : 557 sq.ft. (51.7 sq.m.) approx.
Whilst every attempt has been made to ensure the accuracy of the floorplan contained here, measurements of doors, windows, rooms and any other items are approximate and no responsibility is taken for any error, omission or mis-statement. This plan is for illustrative purposes only and should be used as such by any prospective purchaser. The services, systems and appliances shown have not been tested and no guarantee as to their operability or efficiency can be given.
Made with Metropix ©2023

TO LET



Martin & Co Basingstoke

26 London Street • Basingstoke • RG21 7PG
T: 01256-859960 • E: basingstoke@martinco.com

01256-859960

<http://www.martinco.com>



Accuracy: References to the Tenure of a Property are based on information supplied by the Seller. The Agent has not had sight of the title documents. A Buyer is advised to obtain verification from their Solicitor. Items shown in photographs including but not limited to carpets, fixtures and fittings are not included unless specifically mentioned within the sales particulars. They may however be available by separate negotiation. Buyers must check the availability of any property and make an appointment to view before embarking on any journey to see a property. No person in the employment of the agent has any authority to make any representation about the property, and accordingly any information given is entirely without responsibility on the part of the agents, sellers(s) or lessors(s). Any property particulars are not an offer or contract, nor form part of one. **Sonic / Laser Tape:** Measurements taken using a sonic / laser tape measure may be subject to a small margin of error. **All Measurements:** All Measurements are Approximate. **Services Not tested:** The Agent has not tested any apparatus, equipment, fixtures and fittings or services and so cannot verify that they are in working order or fit for the purpose. A Buyer is advised to obtain verification from their Solicitor or Surveyor.



Normandy House, Alencon Link, RG21 7BZ

2 Bedrooms, 1 Bathroom, Apartment

£1,400 pcm





Normandy House, Alencon Link

Apartment,
2 bedroom, 1 bathroom

£1,400 pcm

Date available: 28th June 2024

Deposit: £1,615.38

Unfurnished

Council Tax band: C

- 2 Bedroom Apartment
- Parking for 1 car
- Luxury Bathroom with Quality Fittings
- Open Plan Living Room
- White Goods Including a Dishwasher
- Combination Blinds Partial or full black-out
- Town Centre Location

A 2 bedroom GROUND FLOOR apartment which is located next to Basingstoke's train station. The apartment comes with parking and has high-quality appliances and fine detailing. The kitchen area has built-in appliances including a dishwasher

General

Video entry phone system
Stainless-steel contemporary door furniture
Plank sun-dried oak effect flooring
Grey double-glazed windows
Combination blinds partial or full black-out
Water and electric separately metered
Fibre telephone/broadband connection
Flats BT Openreach telephone and data "ready"

KITCHEN / UTILITY CUPBOARD

Brushed chrome sockets/switches to kitchen
Integrated fridge freezer & dishwasher
Premium Laminate Worktop
Wood Effect Wall Cupboards
Sink and mixer tap
Integrated single electric oven
Electric ceramic hob with touch control
Integrated kitchen extractor fan
Washer Dryer

Score	Energy rating	Current	Potential
92+	A		
81-91	B		
69-80	C	73 C	73 C
55-68	D		
39-54	E		
21-38	F		
1-20	G		

HEATING

Electric radiators - complete with "smart" localised controls & thermostats
Remote – App-enabled control facility
Electric heated towel rails within bathrooms & shower rooms
Large self-contained water heater cylinder.

BATHROOM

Modern toilet with built-in cistern and soft close lid
Chrome mixer taps
Modern worktop and Wash Hand Basin
Shower screen to bath
Fully Tiled to Wet Areas, including floors
Thermostatic shower LED mirror with shaver socket and demister function

LIGHTING, AV & VENTILATION

White LED downlights throughout
Modern white sockets / switches
USB points within the Living room & Bedrooms
Wiring for TV, telephone, and SKY Q point
Hard-wired smoke & heat alarms
ME System (Mechanical Extract Ventilation)

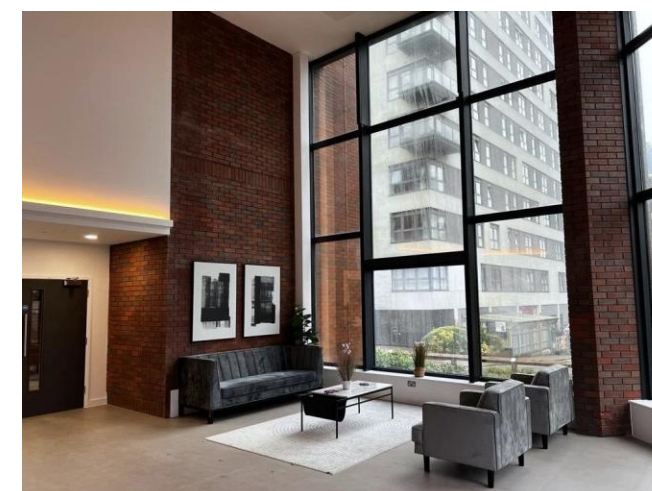
THE BUILDING

Large Reception, Two Lifts
Fibre Broadband
Secure onsite parking (2nd space for an extra £100 per month)
Cycle stores
Large Refuse Store
On-site building managers office
Extensive CCTV camera coverage of external areas, entrance lobbies & circulation spaces
Smart parcel drop box facility

FRONT DOOR TO

ENTRANCE HALL Oak effect laminate flooring, intercom phone, electric radiator and utility cupboard with washer/dryer.

LOUNGE/KITCHEN 17' 3" x 16' 0" (5.27m x 4.87m) Two windows with combination blinds partial or full black-out, oak effect laminate flooring, electric radiator, and utility cupboard with washer/dryer.



KITCHEN AREA

A range of eye and base level storage units with rolled edge work surfaces with under-cabinet lighting, integrated oven, four ring ceramic hob with extractor hood over, integrated slimline dishwasher, and fridge/freezer. There are chrome plugs including one with USB ports

BEDROOM 1 12' 8" x 8' 9" (3.85m x 2.67m) Window with Combination blinds partial or full black-out, carpet and electric radiator

BEDROOM 2 10' 10" x 7' 0" (3.30m x 2.14m) Window with Combination blinds partial or full black-out, carpet and electric radiator

BATHROOM Bath with shower over, low level WC with a soft close toilet seat, wash hand basin, thermostatic shower LED mirror with shaver socket and demister function, towel radiator, tiled flooring and extractor fan

OUTSIDE Bicycle storage, parcel collection and delivery locker and parking for one car

APPLICATIONS A holding deposit equivalent to 1 weeks rent will be required to reserve the property while referencing checks are being carried out. With the tenants' consent this holding deposit will be refunded against the first month's rent. The holding deposit can be retained if the applicant provides false or misleading information, fails Right to Rent checks, withdraws from the property or fails to take reasonable steps to enter into the tenancy.

In accordance with the Tenant Fees Act applicants will be required to enter into the tenancy agreement no more than 15 days after paying the holding deposit. Failure to do so for any of the above mentioned reasons may result in you losing your holding deposit. An extension to the deadline may be entered into if agreed in writing by all parties.

Right to Rent Checks

By law, Right to Rent checks must be carried and as such will be required to provide proof of ID and address in accordance with Home Office guidelines. More information can be found at: https://assets.publishing.service.gov.uk/government/uploads/system/uploads/attachment_data/file/573057/6_1193_HO_NH_Right-to-Rent-Guidance.pdf

Reference Checks and Credit Worthiness

All applicants will be subject to a credit check carried out by a 3rd party to check for CCJs and IVAs Applicants will need to provide proof of an income of at least 2.5 x annual rent.

We will also carry out employment checks, affordability checks, previous landlord reference and proof of address history, usually up to 3 years.

Documentation that will be required

Passport, driving licence, utility bill dated in the last 3 months (if proof of address) and pay slips

MATERIAL INFORMATION Council Tax Band: B

EPC Rating C

Minimum Tenancy Term: 12 Months

Rent: £1400 per month

Deposit: £1615.38

Parking for 1 car