

ON HOLD



Formosa House, Cheltenham
Asking Price Of £575,000


MARTIN & CO



Northfield Terrace, Cheltenham

4 Bedrooms, 2 Bathroom

Asking Price Of £575,000

- TAKE THE 3D VIRTUAL TOUR
- Grade 2 Listed
- Detached House
- Private Parking in Gated Courtyard
- 4 Bedrooms
- 3 Reception Rooms
- 2 Bathrooms
- Central Location
- Modern Kitchen with Bi-fold doors to garden



Built in the 1820s, this Grade II Listed house blends period features and some beautiful details with modern clean lines.

Detached period homes like this are rare in Cheltenham and date back to a time long before Cheltenham grew to the town it is now.

There is a grandeur about the main reception room with its high ceilings, side curved bay and three sash windows that immediately tells you this is no ordinary home. That side bay is mirrored in the main bedroom upstairs and the classic double fronted design gives you a reception hall with reception rooms either side.

In addition to the sitting room on the ground floor there is a drawing room and a kitchen diner / family space which incorporates a side extension. The extension has a bank of bi-fold doors opening onto the garden with floor to ceiling windows on either side, making this a beautiful modern space to contrast with the traditional reception rooms. The ground floor also offers a utility space off the kitchen plus a shower / wet room with WC.

The impressive hallway leads down to the large lower-ground floor bedroom with built in wardrobes. The staircase also leads up to the first floor landing where the impression of the Victorian wallpaper can be appreciated. This was lovingly restored as part of restoration works that took place a few years ago. Off this landing is the aforementioned main bedroom, plus a second double guest room with feature fireplace and a 4th guest room to the front.

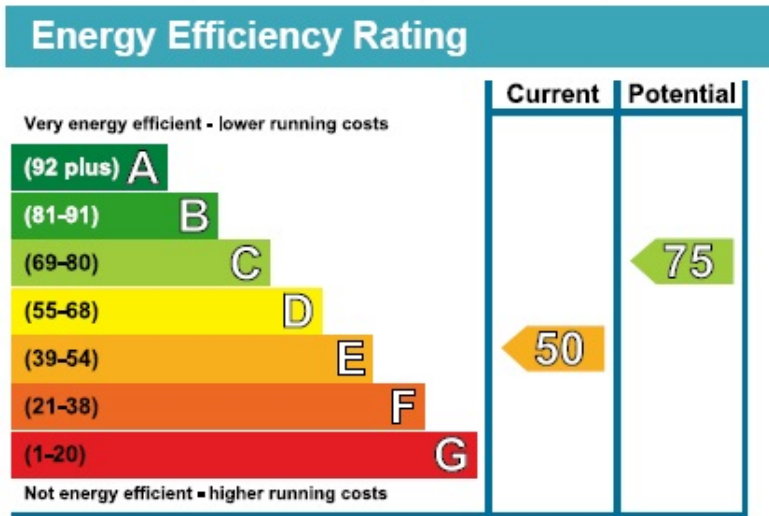
There is also a large four-piece family bathroom with roll-top bath and separate shower. There is hard

flooring, tasteful wooden panelling and a classic looking sink with a double mirrored cabinet above.

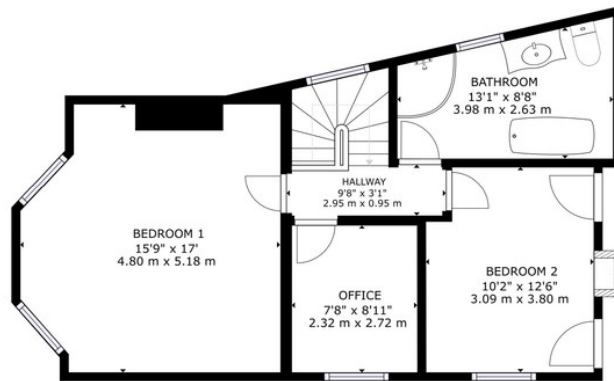
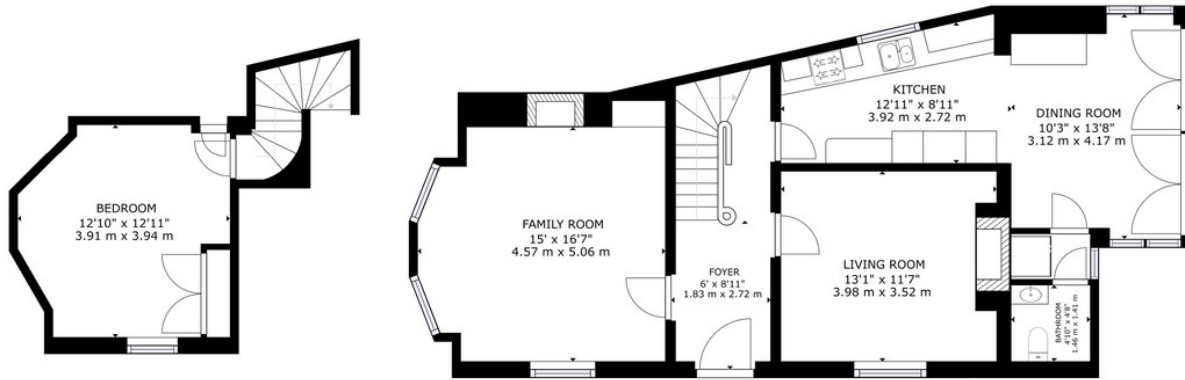
Outside the paved town garden has double gates which allow you to bring a car off-road if you wish. There is also on street permit parking available.

Formosa House is situated just to the north of the town centre on Northfield Terrace and benefits from gas central heating and council tax band C. The property is Grade II listed, Freehold and offered to the market with no onward chain. Viewing is advised to appreciate this unique home.









GROSS INTERNAL AREA
 FLOOR 1: 187 sq ft, 17.41 m², FLOOR 2: 805 sq ft, 74.76 m²
 FLOOR 3: 606 sq ft, 56.28 m²
 TOTAL: 1598 sq ft, 148.45 m²

SIZES AND DIMENSIONS ARE APPROXIMATE, ACTUAL MAY VARY.



Cheltenham Office

33 Rodney Road • Cheltenham • GL50 1HX
 T: 01242 220600 • E: cheltenham@martinco.com

01242 220600

<http://www.martinco.com>



Accuracy: References to the Tenure of a Property are based on information supplied by the Seller. The Agent has not had sight of the title documents. A Buyer is advised to obtain verification from their Solicitor. Items shown in photographs including but not limited to carpets, fixtures and fittings are not included unless specifically mentioned within the sales particulars. They may however be available by separate negotiation. Buyers must check the availability of any property and make an appointment to view before embarking on any journey to see a property. No person in the employment of the agent has any authority to make any representation about the property, and accordingly any information given is entirely without responsibility on the part of the agents, sellers(s) or lessors(s). Any property particulars are not an offer or contract, nor form part of one. **Sonic / laser Tape:** Measurements taken using a sonic / laser tape measure may be subject to a small margin of error. **All Measurements:** All Measurements are Approximate. **Services Not tested:** The Agent has not tested any apparatus, equipment, fixtures and fittings or services and so cannot verify that they are in working order or fit for the purpose. A Buyer is advised to obtain verification from their Solicitor or Surveyor.

