

Upper Kinraig Street,

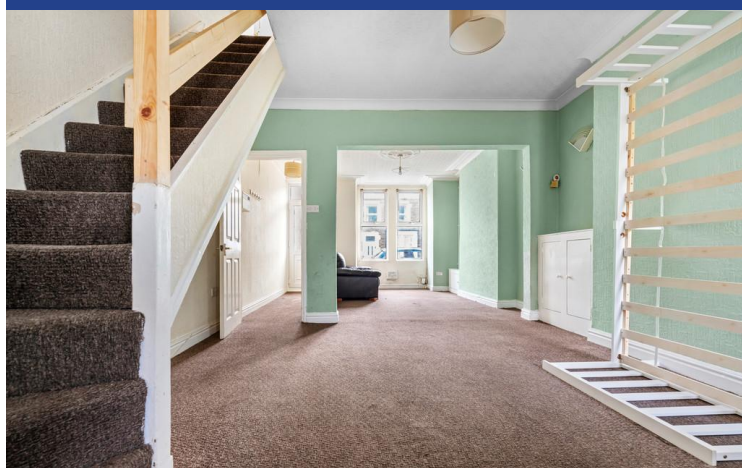
Roath, Cardiff, CF24 3HB



Estate Agents and
Chartered Surveyors

Asking Price Of

£225,000



Mid-Terraced House

2

1

1

1

Property Description

****TRADITIONAL MID-TERRACED HOUSE* NO CHAIN**** MGY are pleased to offer for sale a spacious two bedroom mid-terraced house, situated within the popular Roath area. Walking distance to Cardiff City Centre, and local amenities. The accommodation briefly comprises of entrance hall, lounge/diner, kitchen, two double bedrooms, bathroom, and low maintenance rear garden. The property further benefits from original features, gas central heating and double glazing. No chain. Viewing highly recommended.

Tenure Freehold

Council Tax Band D

Floor Area Approx 711 sq ft

Viewing Arrangements
Strictly by appointment

ENTRANCE

Entered via front courtyard and uPVC door leading to entrance hall. Carpeted flooring. Wall mounted radiator. Door leading to living room and dining room. Stairway to first floor.

LOUNGE/DINER

22' 11" x 12' 4" (7.00m x 3.78max)
Double glazed uPVC windows to front. Carpeted flooring. Two wall mounted radiators. Ceiling rose and coving. Built in storage cupboards. TV Aerial point. Telephone point. PowerPoints. Door leading to kitchen.

KITCHEN

11' 11" x 7' 10" (3.64m x 2.39m)
Fitted with a range of base and eye level units across two walls incorporating stainless steel double sink and drainer with hot and cold taps over. Complementary rounded work surfaces. Integrated electric oven and four ring electric hob with extractor hood above. Space for fridge/freezer. Plumbing for washing machine. Vinyl flooring, partly tiled walls and splash backs. Double glazed window to side aspect. Wall mounted radiator. Pendant light. PowerPoints.

BATHROOM

7' 6" x 6' 1" (2.30max x 1.86m)
Double glazed obscured glass window to rear aspect. Vinyl flooring. Party tiled walls. Panelled bath, with shower fixture over. Pedestal wash hand basin, with hot and cold tap. W.C. Chrome fittings. Wall mounted radiator.

FIRST FLOOR

BEDROOM ONE

12' 8" x 9' 9" (3.88m x 2.99m)
Double glazed uPVC windows to front. Double bedroom. Built in sliding door wardrobe. Wall mounted radiator. PowerPoints.

BEDROOM TWO

10' 1" x 9' 5" (3.09m x 2.89max)
Double glazed uPVC windows to rear. Double bedroom. Storage cupboard, housing boiler. Wall mounted radiator. PowerPoints.

OUTSIDE

Low maintenance rear garden. Paved, with stone wall surround. Side access from the kitchen.

TENURE

MGY are advised that the property is FREEHOLD.

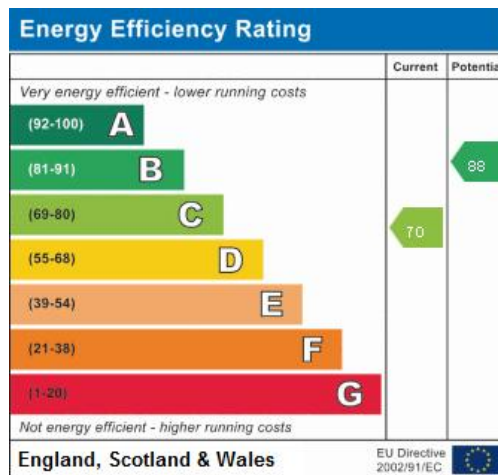
Upper Kinraig Street,
Roath, Cardiff, CF24 3HB



Upper Kinraig Street, Roath, Cardiff, CF24 3HB



Whilst every attempt has been made to ensure the accuracy of the floorplan contained here, measurements of doors, windows, rooms and any other items are approximate and no responsibility is taken for any error, omission or mis-statement. This plan is for illustrative purposes only and should be used as such by any prospective purchaser. The services, systems and appliances shown have not been tested and no guarantee as to their operability or efficiency can be given.
Made with Metropix ©2024



Cardiff 029 2046 5466

13 Mount Stuart Square, Cardiff Bay, Cardiff,
South Glamorgan, CF10 5EE



mgy.co.uk

Important Notice: These particulars are prepared for guidance only and do not form whole or any part of any offer or contract. Whilst the particulars are given in good faith, they are not to be relied upon as being a statement or representation of fact. They are made without responsibility on the part of MGY Ltd or Vendor/lessor and the prospective purchaser/lessee should satisfy themselves by inspection or otherwise as to their accuracy. Neither MGY Ltd nor anyone in their employ, or the vendor/lessor, imply, make or give any representation/warranty whatsoever in relation to this property.