









# Hayzel Cottage, Dams Lane

Allostock

Detached country house standing in an established and private garden plot, with open views over adjoining farmland and occupying a convenient position towards the end of a quiet lane, between Knutsford and Holmes Chapel.

Council Tax band: G

Tenure: Freehold

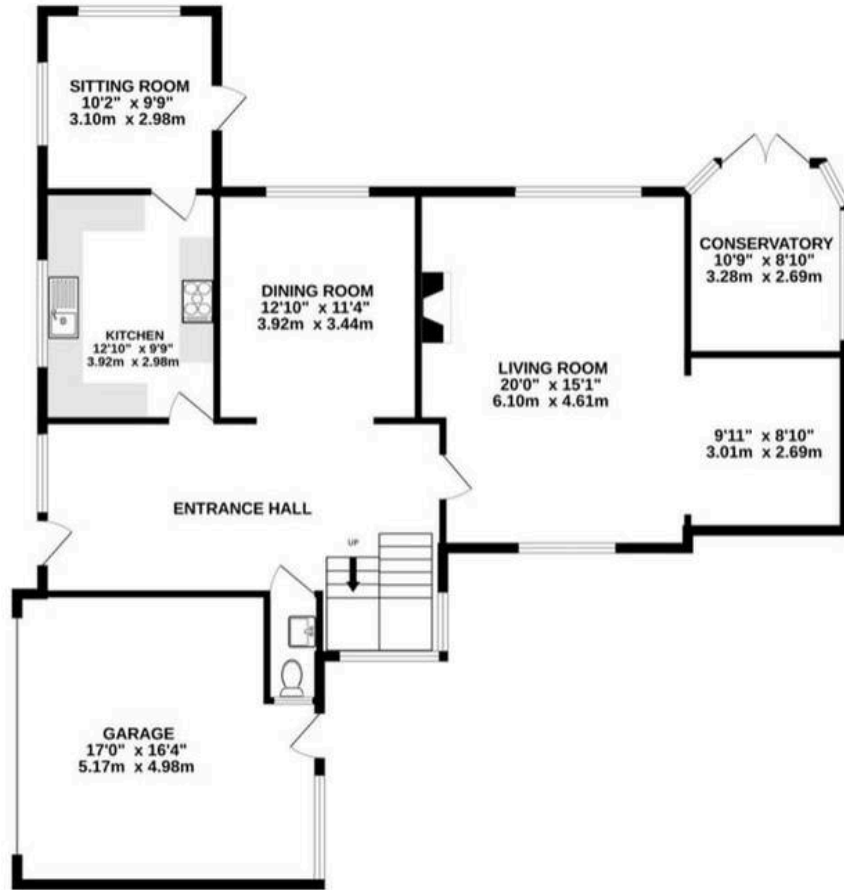
EPC Energy Efficiency Rating: F

EPC Environmental Impact Rating: E

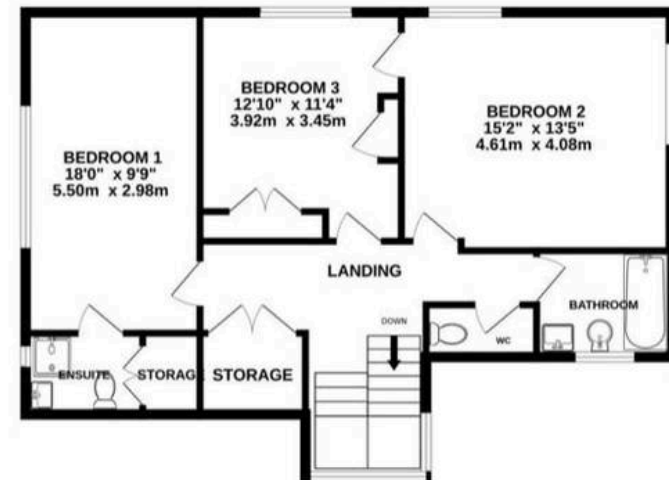
- Detached country house with potential for modernisation/further extension
- Good sized private gardens
- Excellent location towards the end of a quiet lane
- Attached double garage
- Open views over adjoining farmland
- Located between Knutsford and Holmes Chapel



GROUND FLOOR  
1357 sq.ft. (126.1 sq.m.) approx.



1ST FLOOR  
798 sq.ft. (74.1 sq.m.) approx.



TOTAL FLOOR AREA : 2155 sq.ft. (200.2 sq.m.) approx.  
Measurements are approximate. Not to scale. Illustrative purposes only  
Made with Metropix ©2023





## Stuart Rushton & Company

Stuart Rushton & Co, 35 King Street – WA16 6DW

01565 757000

[enquiries@srushton.co.uk](mailto:enquiries@srushton.co.uk)

[www.srushton.co.uk](http://www.srushton.co.uk)



We are not authorised to make or give any representations or warranties in relation to the property either here or elsewhere. We assume no responsibility for any statement that may be made in these particulars, and they do not form part of any offer or contract and must not be relied upon as statements or representation of fact. Any areas, measurements or distances are approximate. The text, photographs and plans are for guidance only. Importantly, it should not be assumed that the property has all necessary planning, building regulations or other consents and we have not tested any services, equipment or facilities. Purchasers must satisfy themselves by inspection or otherwise.