





16 Ascot Drive

Plumley, Knutsford

An attractive, recently refurbished period house with a lovely large garden and off-road parking, situated in a semi-rural position conveniently located five minutes drive from the prestigious town of Knutsford.

Council Tax band: D

Tenure: Freehold

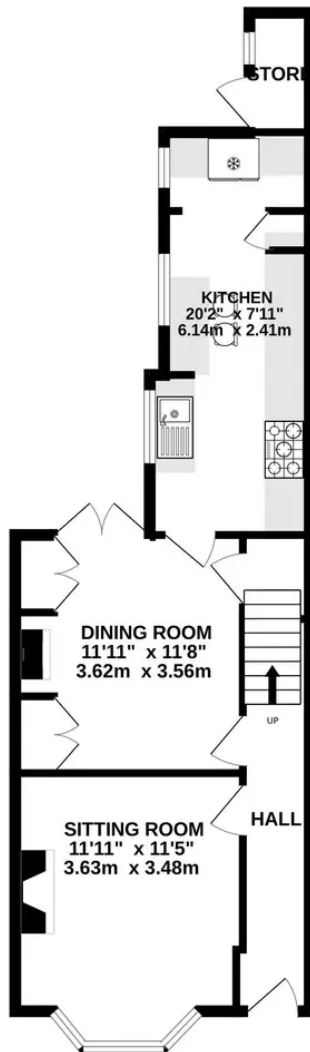
EPC Energy Efficiency Rating: E

EPC Environmental Impact Rating: E

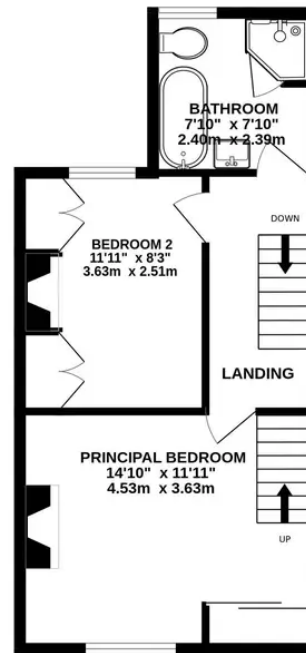
- A well-presented period terrace home
- Two generous bedrooms and a loft room
- Lovely character and charm throughout
- Off-road parking for two cars
- Large lawned garden and a paved courtyard
- Convenient position for Knutsford town centre, road and rail links



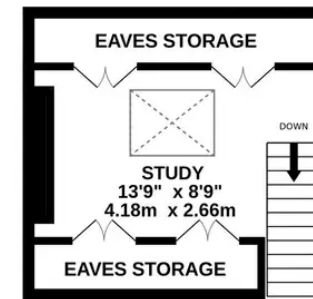
GROUND FLOOR
521 sq.ft. (48.4 sq.m.) approx.



1ST FLOOR
402 sq.ft. (37.4 sq.m.) approx.



2ND FLOOR
203 sq.ft. (18.9 sq.m.) approx.



TOTAL FLOOR AREA : 1126 sq.ft. (104.6 sq.m.) approx.

Whilst every attempt has been made to ensure the accuracy of the floorplan contained here, measurements of doors, windows, rooms and any other items are approximate and no responsibility is taken for any error, omission or mis-statement. This plan is for illustrative purposes only and should be used as such by any prospective purchaser. The services, systems and appliances shown have not been tested and no guarantee as to their operability or efficiency can be given.

Made with Metropix ©2023



Stuart Rushton & Company

Stuart Rushton & Co, 35 King Street – WA16 6DW

01565 757000

enquiries@srushton.co.uk

www.srushton.co.uk



We are not authorised to make or give any representations or warranties in relation to the property either here or elsewhere. We assume no responsibility for any statement that may be made in these particulars, and they do not form part of any offer or contract and must not be relied upon as statements or representation of fact. Any areas, measurements or distances are approximate. The text, photographs and plans are for guidance only. Importantly, it should not be assumed that the property has all necessary planning, building regulations or other consents and we have not tested any services, equipment or facilities. Purchasers must satisfy themselves by inspection or otherwise.