





9 Tabley Grove

Knutsford

Just a short walk from the bustling town centre and local schools, stands a splendid semi-detached family home, epitomising contemporary elegance and comfort. This beautifully extended residence boasts modern open plan living accommodation, three generously sized bedrooms and two bathrooms.

Council Tax band: D

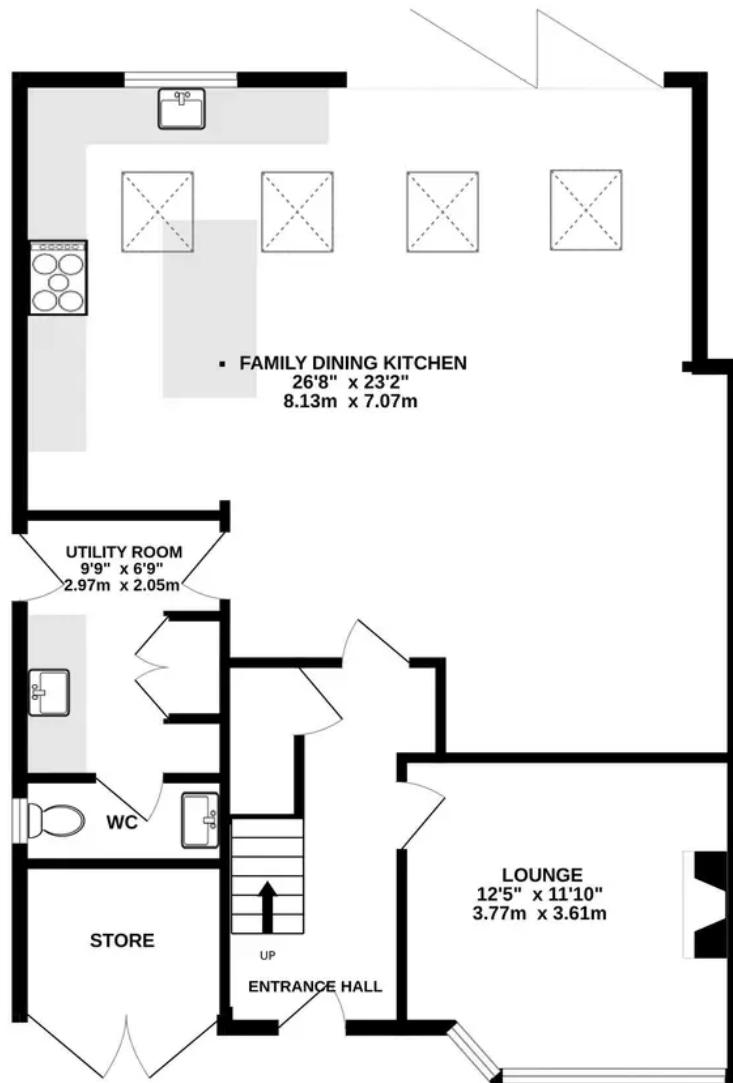
Tenure: Freehold

EPC Energy Efficiency Rating: C

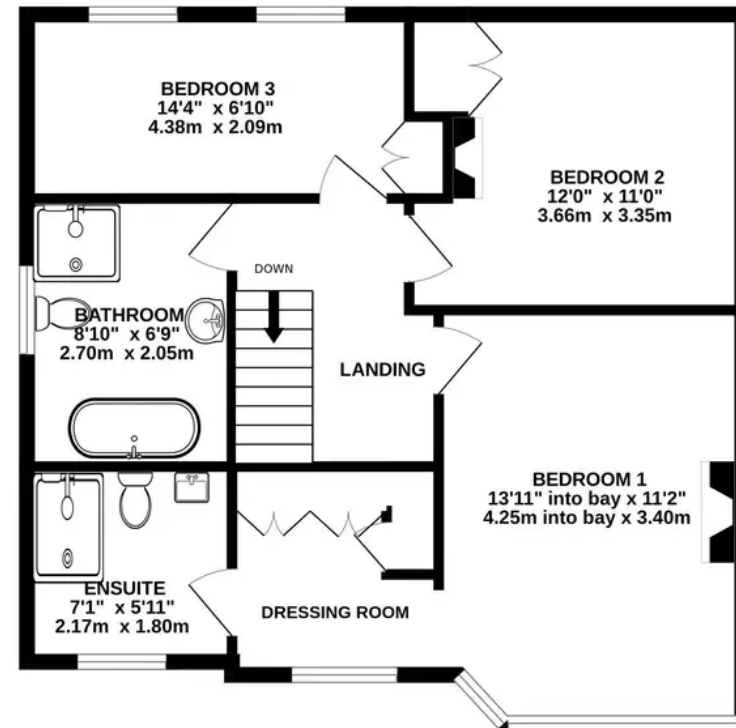
- An extended family home
- Stunning decor throughout
- High standard of finish and quality components
- Wonderful living/kitchen/diner
- Three good bedrooms and two bathrooms
- Superb principal bedroom suite
- Popular residential road near local schools and the town centre
- Good sized landscaped garden ideal for entertaining



GROUND FLOOR
929 sq.ft. (86.3 sq.m.) approx.



BEDROOM 3
658 sq.ft. (61.2 sq.m.) approx.



TOTAL FLOOR AREA : 1588 sq.ft. (147.5 sq.m.) approx.

Whilst every attempt has been made to ensure the accuracy of the floorplan contained here, measurements of doors, windows, rooms and any other items are approximate and no responsibility is taken for any error, omission or mis-statement. This plan is for illustrative purposes only and should be used as such by any prospective purchaser. The services, systems and appliances shown have not been tested and no guarantee as to their operability or efficiency can be given.



Stuart Rushton & Company

Stuart Rushton & Co, 35 King Street – WA16 6DW

01565 757000

enquiries@srushton.co.uk

www.srushton.co.uk



We are not authorised to make or give any representations or warranties in relation to the property either here or elsewhere. We assume no responsibility for any statement that may be made in these particulars, and they do not form part of any offer or contract and must not be relied upon as statements or representation of fact. Any areas, measurements or distances are approximate. The text, photographs and plans are for guidance only. Importantly, it should not be assumed that the property has all necessary planning, building regulations or other consents and we have not tested any services, equipment or facilities. Purchasers must satisfy themselves by inspection or otherwise.