









Dicklow Cob Farm Dicklow Cob

Lower Withington

A beautifully refurbished and extended country house in a sought after village location, boasting lovely southerly views, with excellent equestrian facilities and delightful views over its adjoining gardens and grounds, that extend in all to just over 8 acres.

Council Tax band: G

Tenure: Freehold

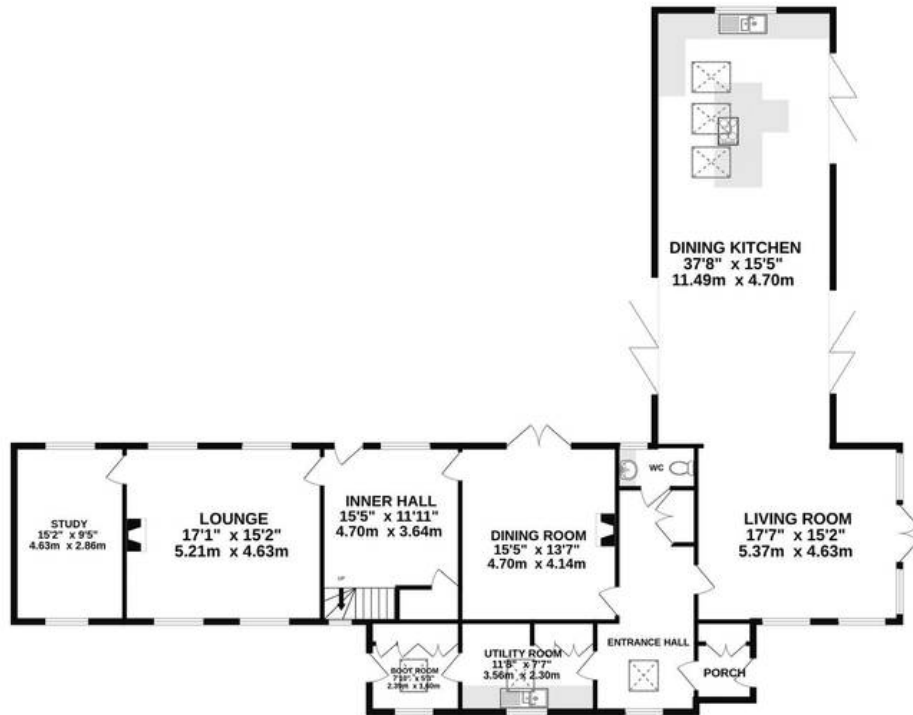
EPC Energy Efficiency Rating: C

EPC Environmental Impact Rating: B

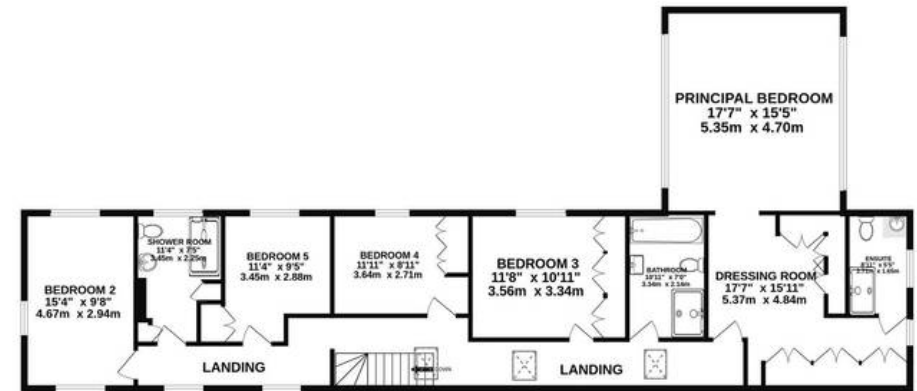
- Beautifully refurbished country house in south facing gardens
- Magnificent oak framed extension
- Wonderful equestrian facilities including manege and stabling
- Gardens and grounds extending to 8.1 acres or thereabouts
- Superb country views
- Excellent village position
- Five bedrooms, four receptions including impressive principal bedroom suite



GROUND FLOOR
1990 sq.ft. (184.8 sq.m.) approx.



1ST FLOOR
1432 sq.ft. (133.0 sq.m.) approx.



TOTAL FLOOR AREA : 3422 sq.ft. (317.9 sq.m.) approx.

Whilst every attempt has been made to ensure the accuracy of the floorplan contained here, measurements of doors, windows, rooms and any other items are approximate and no responsibility is taken for any error, omission or mis-statement. This plan is for illustrative purposes only and should be used as such by any prospective purchaser. The services, systems and appliances shown have not been tested and no guarantee as to their operability or efficiency can be given.

Made with Metropix ©2023



Stuart Rushton & Company

Stuart Rushton & Co, 35 King Street – WA16 6DW

01565 757000

enquiries@srushton.co.uk

www.srushton.co.uk



We are not authorised to make or give any representations or warranties in relation to the property either here or elsewhere. We assume no responsibility for any statement that may be made in these particulars, and they do not form part of any offer or contract and must not be relied upon as statements or representation of fact. Any areas, measurements or distances are approximate. The text, photographs and plans are for guidance only. Importantly, it should not be assumed that the property has all necessary planning, building regulations or other consents and we have not tested any services, equipment or facilities. Purchasers must satisfy themselves by inspection or otherwise.