





Oaklea House Davenport Lane

Mobberley, Knutsford

A large and impressive detached barn conversion, situated in a wonderful rural position, standing in charming cottage style gardens and grounds, and including a separate paddock of about an acre.

Council Tax band: G

Tenure: Freehold

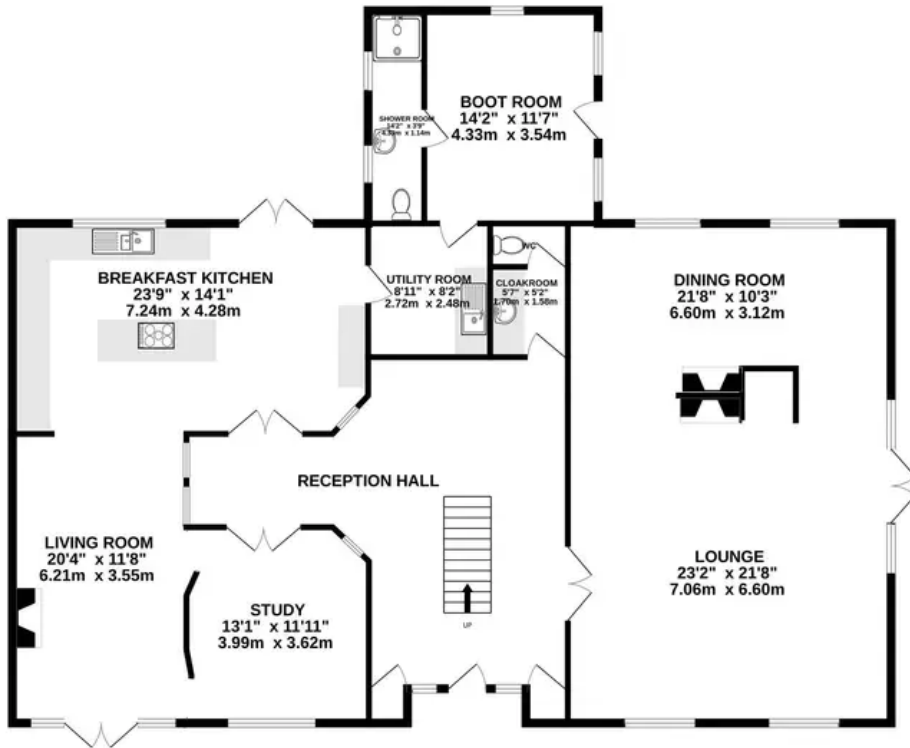
EPC Energy Efficiency Rating: E

EPC Environmental Impact Rating: D

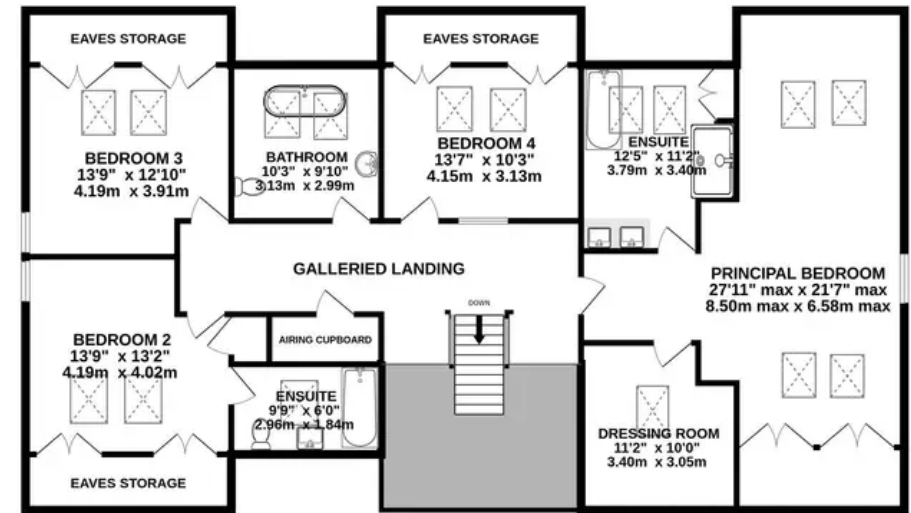
- Superb 4000 square foot barn conversion in a lovely rural location
- Pretty gardens with pond, one acre paddock
- More land available separately if required, including a stable yard, up to 11 acres in all
- Four bedrooms, three bathrooms and three reception rooms
- Excellent location on the Wilmslow side of Mobberley



GROUND FLOOR
2138 sq.ft. (198.6 sq.m.) approx.



1ST FLOOR
1703 sq.ft. (158.2 sq.m.) approx.



TOTAL FLOOR AREA : 3841 sq.ft. (356.8 sq.m.) approx.

Whilst every attempt has been made to ensure the accuracy of the floorplan contained here, measurements of doors, windows, rooms and any other items are approximate and no responsibility is taken for any error, omission or mis-statement. This plan is for illustrative purposes only and should be used as such by any prospective purchaser. The services, systems and appliances shown have not been tested and no guarantee as to their operability or efficiency can be given.

Made with Metropix ©2023



Stuart Rushton & Company

Stuart Rushton & Co, 35 King Street – WA16 6DW

01565 757000

enquiries@srushton.co.uk

www.srushton.co.uk



We are not authorised to make or give any representations or warranties in relation to the property either here or elsewhere. We assume no responsibility for any statement that may be made in these particulars, and they do not form part of any offer or contract and must not be relied upon as statements or representation of fact. Any areas, measurements or distances are approximate. The text, photographs and plans are for guidance only. Importantly, it should not be assumed that the property has all necessary planning, building regulations or other consents and we have not tested any services, equipment or facilities. Purchasers must satisfy themselves by inspection or otherwise.