





110 Dixon Drive

Chelford

An exquisite five-bedroom detached family home occupying a superb plot and position within the highly sought-after Dixon Drive development.

Council Tax band: G

Tenure: Freehold

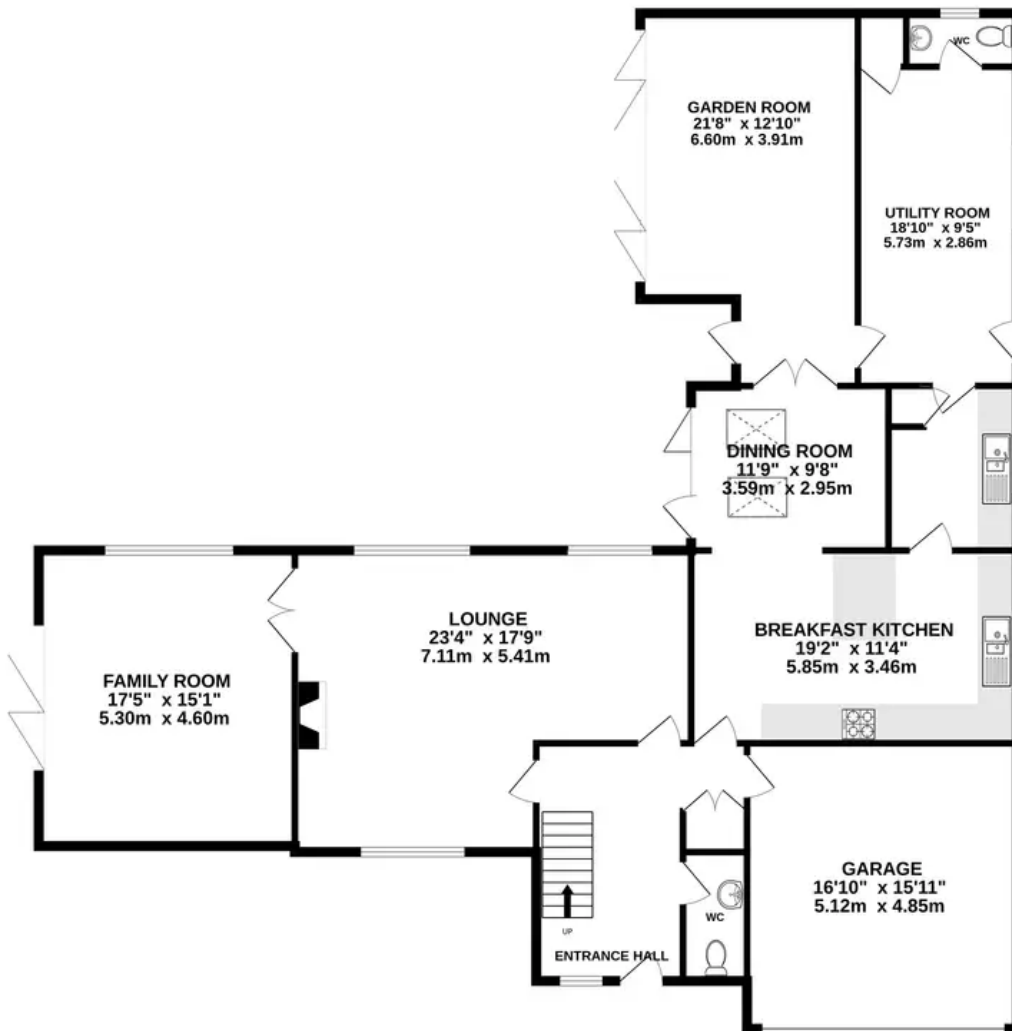
EPC Energy Efficiency Rating:

EPC Environmental Impact Rating:

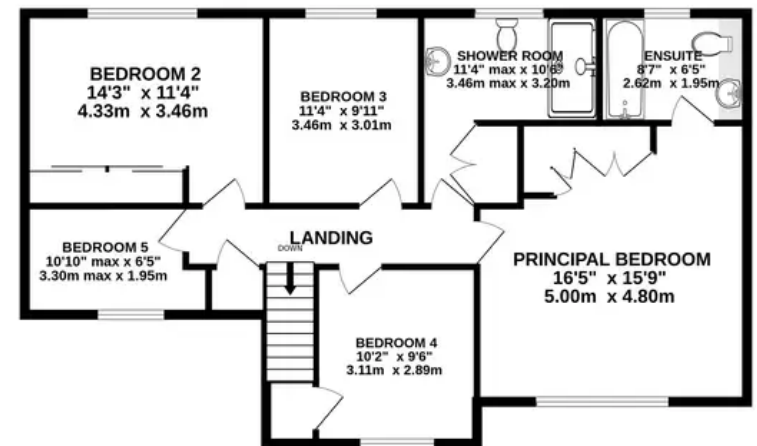
- A large extended detached family home
- More than 2500 square feet plus double garage
- Extensive landscaped gardens looking out over farmers field
- Superb position with a large driveway
- Spacious reception rooms with lovely flow
- Close to Knutsford, Alderley Edge and popular schools
- Short walk from Chelford train station connecting to Manchester city centre
- No onward chain



GROUND FLOOR
1914 sq.ft. (177.9 sq.m.) approx.



1ST FLOOR
931 sq.ft. (86.5 sq.m.) approx.



TOTAL FLOOR AREA : 2845 sq.ft. (264.3 sq.m.) approx.

Whilst every attempt has been made to ensure the accuracy of the floorplan contained here, measurements of doors, windows, rooms and any other items are approximate and no responsibility is taken for any error, omission or mis-statement. This plan is for illustrative purposes only and should be used as such by any prospective purchaser. The services, systems and appliances shown have not been tested and no guarantee as to their operability or efficiency can be given.



Stuart Rushton & Company

Stuart Rushton & Co, 35 King Street – WA16 6DW

01565 757000

enquiries@srushton.co.uk

www.srushton.co.uk



**Stuart
Rushton**
& COMPANY

We are not authorised to make or give any representations or warranties in relation to the property either here or elsewhere. We assume no responsibility for any statement that may be made in these particulars, and they do not form part of any offer or contract and must not be relied upon as statements or representation of fact. Any areas, measurements or distances are approximate. The text, photographs and plans are for guidance only. Importantly, it should not be assumed that the property has all necessary planning, building regulations or other consents and we have not tested any services, equipment or facilities. Purchasers must satisfy themselves by inspection or otherwise.