



4 Conway Road, Ecclestone

PR7 5SW



£995 pcm



Recently renovated semi detached property with versatile accommodation in a popular residential area close to primary transport routes, schools and village amenities. Available to let immediately.

To the front the driveway leads past the low maintenance garden with mature planting to the detached garage and main entrance. Step into the entrance hallway with the living room to the rear. The newly fitted kitchen has a range of wall and base units, space for appliances and also houses the combi boiler. To the front is bedroom three which could also be used as a reception room and completing the ground floor is the bathroom comprising wc, wash hand basin and mixer shower in cubicle.

To the first floor the landing has access to eaves storage with bedroom one a double and bedroom two a comfortable single. Externally the west facing garden is lovely and private with lawn, hedging and mature planting.



The property has new wiring, consumer units, carpets and is neutrally decorated throughout. It is available now and requires a deposit of £1148 including holding deposit of £225.

Council Tax Band: C

EPC Rating: C

- Semi detached property
- Two/three bedrooms
- Versatile accommodation
- Popular residential location
- Off road parking
- Available now



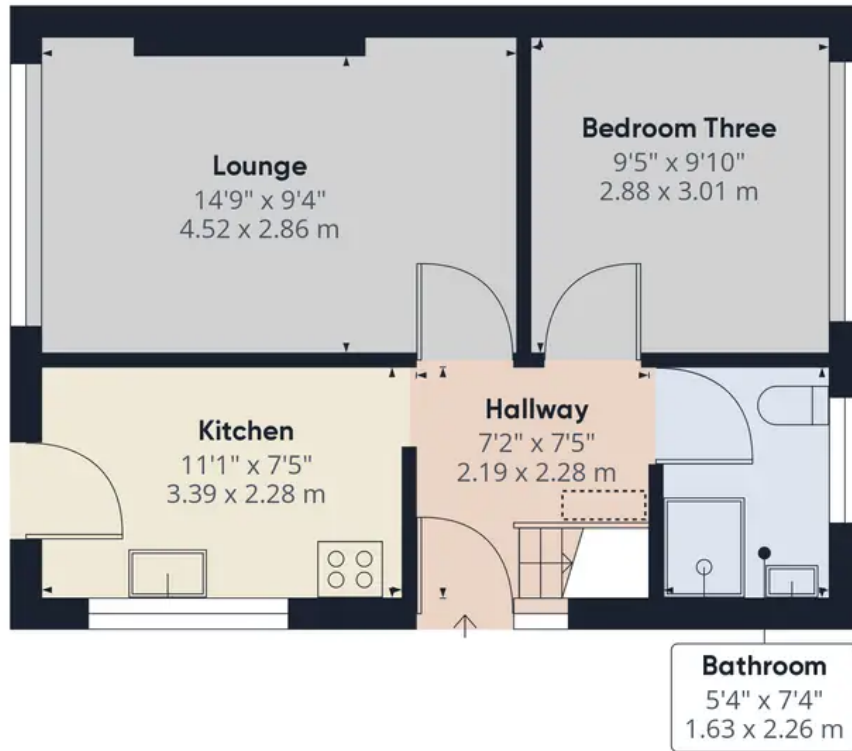
HOME  TRUTHS

Eccleston Branch
265 The Green, Eccleston, PR7 5TF
01257 451673

Coppull Branch
244 Spendmore Lane, Coppull, PR7 5DE
01257 794588

www.hometruthslancs.co.uk
office@hometruthslancs.co.uk





Floor 1 Building 1



Floor 2 Building 1



Floor 1 Building 2

Approximate total area⁽¹⁾

808.38 ft²


75.1 m²

Reduced headroom

4.56 ft²

0.42 m²

(1) Excluding balconies and terraces

 Reduced headroom
(below 1.5m/4.92ft)

While every attempt has been made to ensure accuracy, all measurements are approximate, not to scale. This floor plan is for illustrative purposes only.

GIRAFFE360