

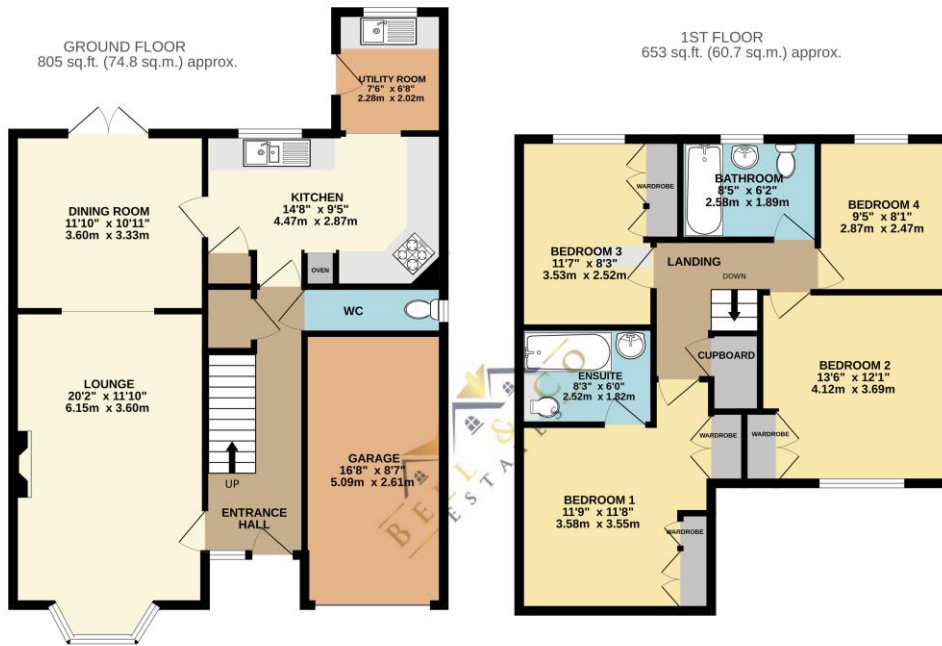


29 Sycamore Drive | Thurcroft | Rotherham | S66 9EP

£280,000

Bell & Co Estates are delighted to present this spacious Four Bedroom Detached home situated on a quiet cul-de-sac location on this popular estate in Thurcroft. In brief the property comprises of spacious Entrance Hallway, under stairs storage cupboard and downstairs WC with wash basin. Front facing spacious LOUNGE with Gas Fire and surround, open plan Dining Room with patio doors opening on to the rear garden. Large modern Kitchen with appliances, plenty of cupboard and worktop space, separate Utility Room with further sink and back door for further access into the garden. Upstairs are FOUR LARGE BEDROOMS, Master Bedroom complete with fitted wardrobes, draws and Ensuite with full size bath with electric Aqualisa power shower above, wash basin and WC. Three further double Bedrooms, two of which also have fitted wardrobes. Family Bathroom complete with shower over bath, wash basin and WC. To the front of the property is an extended driveway for ample parking and access into the garage the boiler. Side gate access to the rear garden with part patio and grassed area with flower borders.

- Four Bedroom Detached
- Spacious Throughout
- Open Plan Lounge with Dining Area
- Large Kitchen with Utility Room
- Master Bedroom Complete With Ensuite and Fitted Wardrobes
- Extended Driveway



TOTAL FLOOR AREA: 1458 sq.ft. (135.4 sq.m.) approx.
 Whilst every attempt has been made to ensure the accuracy of the floorplan contained here, measurements of doors, windows, rooms and any other items are approximate and no responsibility is taken for any error, omission or mis-statement. This plan is for illustrative purposes only and should be used as such by any prospective purchaser. The services, systems and appliances shown have not been tested and no guarantee as to their operability or efficiency can be given.
 Made with Metropix ©2024.

Contact Details

79 Wales Road
 Kiveton Park
 Sheffield
 South Yorkshire
 S26 6RA

www.bellcoestates.com

03333 580590

29 Sycamore Drive
 Thurcroft
 ROTHERHAM
 S66 9EP

Energy rating

D

Valid until
4 April 2034

Certificate number
0320-2105-9340-2704-1655

Property type Detached house

Total floor area 123 square metres

Agents Note: Whilst every care has been taken to prepare these sales particulars, they are for guidance purposes only. All measurements are approximate and for general guidance purposes only and whilst every care has been taken to ensure their accuracy, they should not be relied upon and potential buyers are advised to recheck the measurements