

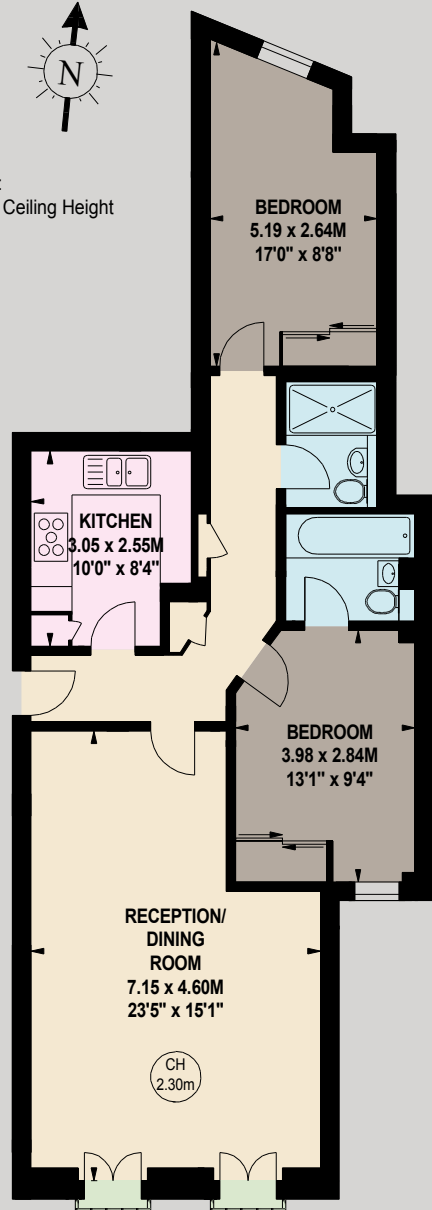


BEAUCHAMP PLACE

KNIGHTSBRIDGE SW3



Key :
CH - Ceiling Height



THIRD FLOOR

APPROXIMATE GROSS INTERNAL AREA

77.85 sq m / 838 sq ft

A BEAUTIFULLY PRESENTED TWO BEDROOM, TWO BATHROOM APARTMENT SITUATED ON THE THIRD FLOOR (WITH LIFT), IN THE HEART OF KNIGHTSBRIDGE.



With a large and bright reception, separate kitchen and communal roof terrace, the property offers the perfect balance between entertaining living, coupled with two well sized double bedrooms and two bathrooms, one of which is ensuite.

Beauchamp Place is perfectly placed to access all the world renowned shops, restaurants and amenities that Knightsbridge has to offer.

- Double Bedroom with Ensuite Bathroom
- Further Double Bedroom ■ Shower Room
- Kitchen ■ Reception Room ■ Communal Roof Terrace
- Lift ■ Weekday Caretaker

£1,000,000

Leasehold with 105 years remaining

Service Charge: Approx. £8,500 per annum including sinking fund



NVP
NICOLAS VAN PATRICK

6-8 MONTPELIER STREET,
LONDON SW7 1EZ
SALES | +44 (0)20 7581 8277
LETTINGS | +44 (0)20 7590 1200
info@nicolasvanpatrick.com
www.nicolasvanpatrick.com

These details have been prepared for general guidance only and should not be relied upon by prospective purchaser/ tenants who before proceeding must check and otherwise satisfy themselves as to the property and the nature, state and availability of any facility or service.