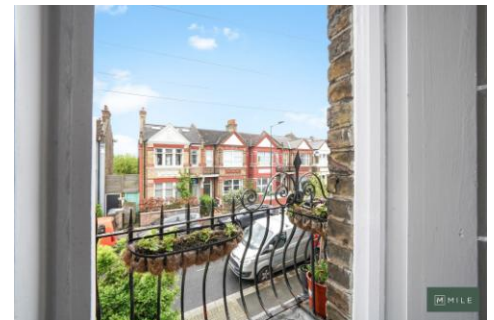




MILE



Clifford Gardens, Kensal Rise NW10

£2,350 pcm

Welcome to Clifford Gardens; newly refurbished and painted two bedroom first floor flat moments away from Kensal Rise Station !

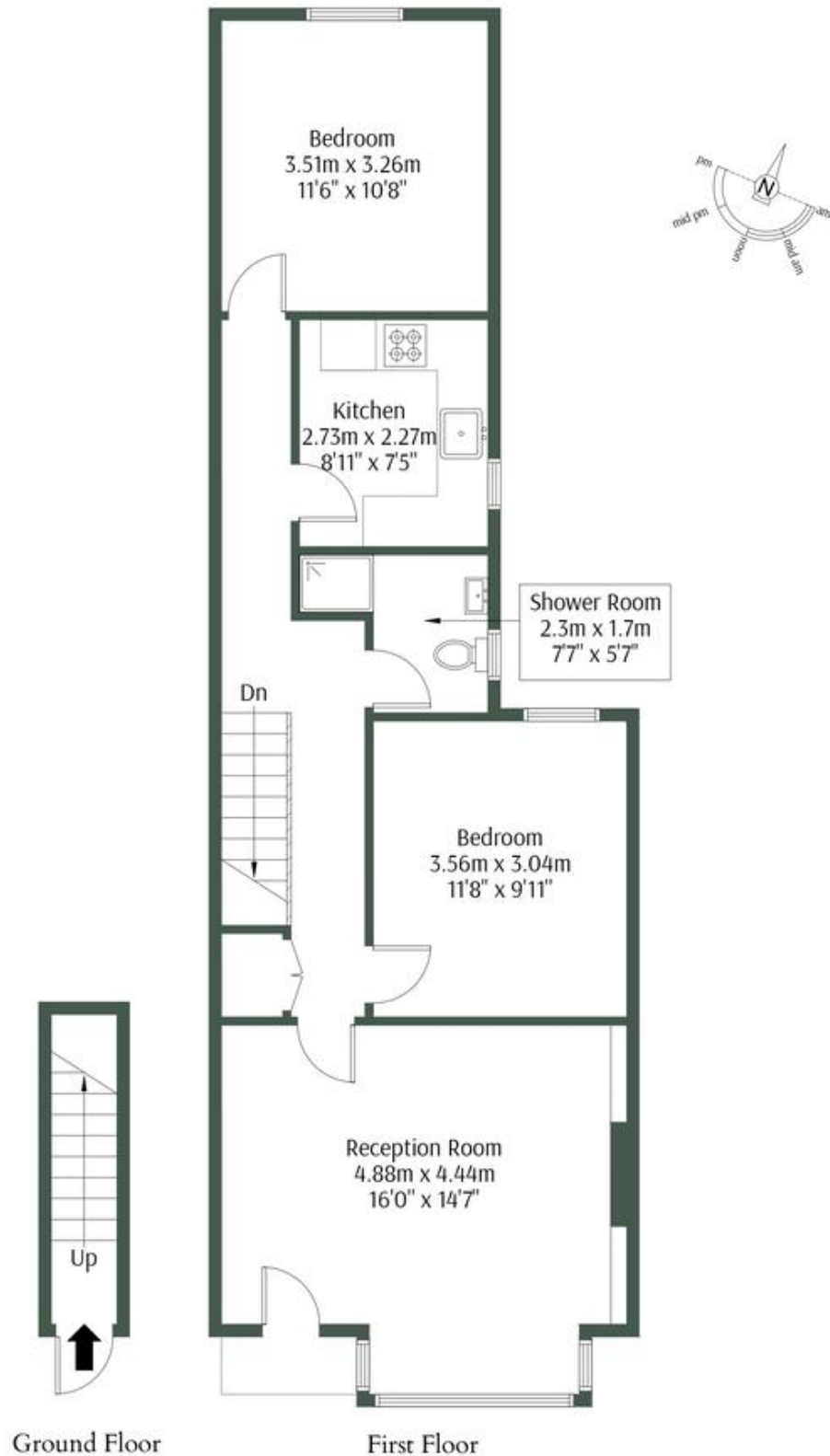
The property benefits from a lovely 16ft reception room with a dining area and access to a south facing balcony, a fully fitted kitchen, two double bedrooms and a three piece shower room.

With sash windows, high ceilings, carpet throughout and an abundance of storage space and natural light ; the opportunity is not to be missed !

- **First floor apartment**
- **Two double bedrooms**
- **Newly refurbished and painted**
- **Superb location**
- **Available now**
- **Unfurnished**
- **Separate kitchen**
- **Bright and airy**
- **Balcony from living-room**
- **Close to shops and transports**

Clifford Gardens, NW10 5JD

Approx Gross Internal Area = 67.5 sq.m / 727 sq.ft



The Floor plan is not to scale and measurements and areas shown are approximate and therefore should be used for

MONEY LAUNDERING REGULATIONS 2003: Intending purchasers will be asked to produce identification documentation at a later stage and we would ask for your co-operation in order that there will be no delay in agreeing the sale.

General: While we endeavour to make our sales particulars fair, accurate and reliable, they are only a general guide to the property and, accordingly, if there is any point which is of particular importance to you, please contact the office and we will be pleased to check the position for you, especially if you are contemplating travelling some distance to view the property.

Measurements: These approximate room sizes are only intended as general guidance. You must verify the dimensions carefully before ordering carpets or any built-in furniture.

Services: Please note we have not tested the services or any of the equipment or appliances in this property, accordingly we strongly advise prospective buyers to commission their own survey or service reports before finalising their offer to purchase.