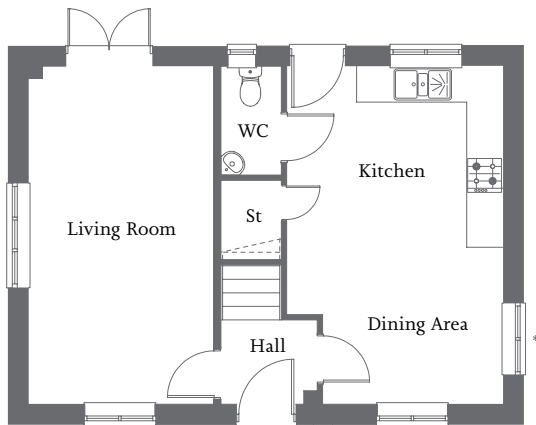




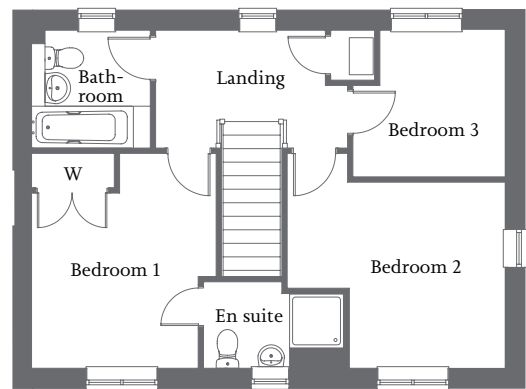
| Living room with French Doors to rear | Open-plan kitchen/dining area |
| Bedroom 1 with en suite and fitted wardrobe | Two further bedrooms and family bathroom | Allocated parking spaces |



* Windows to specific homes only

Ground Floor

Living Room	5.64m x 3.04m	18'6" x 10'0"
Kitchen/Dining Area	5.63m x 3.60m	18'6" x 11'10"



First Floor

Bedroom 1 (incl. wardrobe)	3.57m x 3.10m	11'9" x 10'2"
En suite	2.35m x 1.43m	7'7" x 4'7"
Bedroom 2 (excl. door recess)	3.09m x 2.55m	10'2" x 8'4"
Bedroom 3	2.50m x 2.43m	8'2" x 8'0"
Bathroom	1.99m x 1.96m	6'5" x 6'4"