

Love Homes



Churchill Close, Stewartby, Bedfordshire, MK43 9LU

Step inside this inviting house with an extended living space flooded with natural light. Direct garden access creates harmony between indoors and outdoors. Upstairs, three bedrooms offer comfort, while a modern shower room adds flair. Outside, a spacious garden and driveway with a double garage complete this picturesque property, overlooking a village green.



This property is presented by Stuart Scott - a Love Homes property expert with over 25 years' experience.

Find out more about this property by scanning the QR code.



0.4m



3



1



2

Tenure: Freehold Council Tax Band C

Flitwick & Ampthill 01525 713111



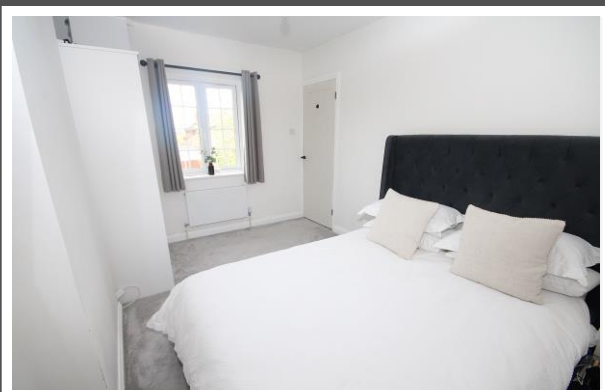
Barton-le-Clay and Luton 01582 882440



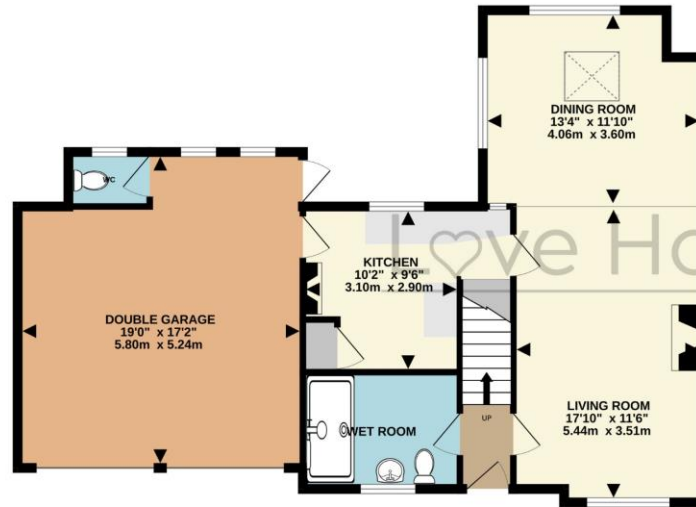
Biggleswade & Sandy 01767 669222



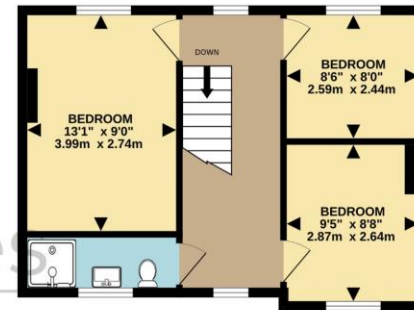
Stewartby village, nestled between Bedford, Milton Keynes, and Ampthill, offers easy access to London via a 40-minute train ride from Bedford or 35 minutes from Milton Keynes to Euston. With close proximity to M1 junction 13 and A1 Black Cat ensures convenient road access. Amenities include a store, social club, Stewartby lakes, and nearby nature escapes at the Forest Centre and Millennium Country Park, providing convenience and tranquility.



GROUND FLOOR
877 sq.ft. (81.4 sq.m.) approx.

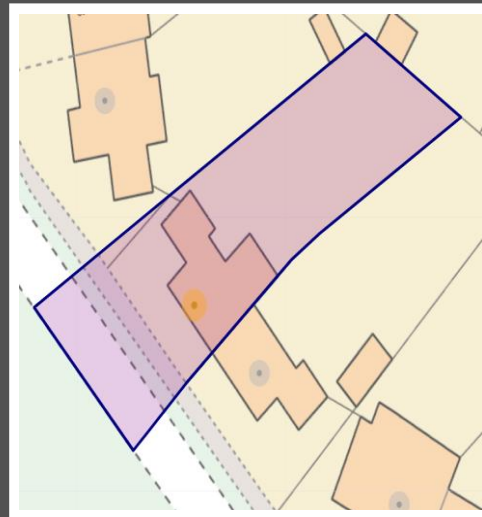


1ST FLOOR
413 sq.ft. (38.4 sq.m.) approx.



TOTAL FLOOR AREA : 1290 sq.ft. (119.8 sq.m.) approx.
Drawn by Love Homes for illustrative purposes only. Measurements and areas shown are approximate.
Made with Metropix ©2024

Score	Energy rating	Current	Potential
92+	A		
81-91	B		
69-80	C		75 C
55-68	D		
39-54	E	39 E	
21-38	F		
1-20	G		



These particulars are set out as a general outline in accordance with the Property Misdescriptions Act (1991) only for the guidance of intending purchasers or lessees, and do not constitute any part of an offer or contract. Details are given without any responsibility, and any intending purchasers, lessees or third parties should not rely on them as statements or representations of fact but must satisfy themselves by inspection or otherwise as to the correctness of each of them. We have not carried out a structural survey and the services, appliances and specific fittings have not been tested. All photographs, measurements, floor plans and distances referred to are given as a guide only and should not be relied upon for the purchase of carpets or any other fixtures or fittings. Gardens, roof terraces, balconies and communal gardens as well as tenure and lease details cannot have their accuracy guaranteed for intending purchasers. Lease details, service ground rent (where applicable) are given as a guide only and should be checked and confirmed by your solicitor prior to exchange of contracts. No person in the employment of Love Homes has any authority to make any representation or warranty whatever in relation to this property. Purchase prices, rents or other prices quoted are correct at the date of publication and, unless otherwise stated, are exclusive of VAT. We retain the copyright in all advertising material used to market this Property. All information is as advised by the seller and subject to change. Council tax bands can be subject to change by the local council.

5 The Russell Centre, Coniston Road, Flitwick, MK45 1QY
Tel: 01525 713111

Email: flitwick@lovehomes.uk

www.lovehomes.uk



Love Homes