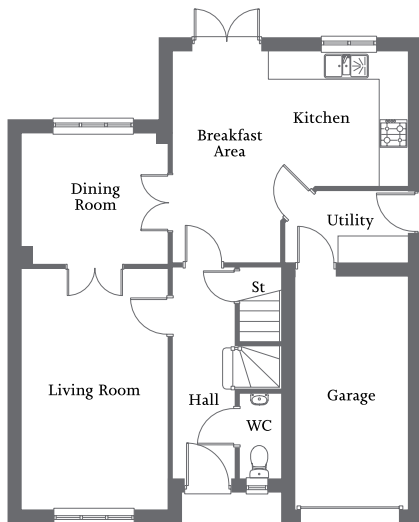


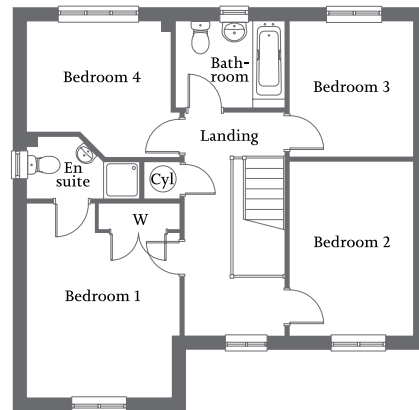


| Front aspect living room | Open-plan kitchen/dining area with French Doors to rear |
| Bedroom 1 with en suite and fitted wardrobe | Three further bedrooms and family bathroom | Integral garage and parking spaces |



Ground Floor

Living Room	3.18m x 5.27m	10'5" x 17'3"
Kitchen/ Breakfast Area	5.14m x 4.63m	16'10" x 15'2"
Dining Room	3.18m x 2.87m	10'5" x 9'5"
Utility	2.70m x 1.57m	8'10" x 5'2"
WC	0.91m x 1.88m	3'0" x 6'2"



First Floor

Bedroom 1 (incl. wardrobe)	3.37m x 4.26m	11'1" x 14'0"
En suite	2.53m x 1.35m	8'4" x 4'5"
Bedroom 2	2.70m x 3.83m	8'10" x 12'7"
Bedroom 3	2.69m x 2.97m	8'10" x 9'9"
Bedroom 4	3.17m x 2.97m	10'5" x 9'9"
Bathroom	2.41m x 1.90m	7'11" x 6'3"