



Cobmead, Hatfield - AL10 0JF

£325,000

END TERRACE HOUSE • TWO BEDROOMS • SPACIOUS LIVING/DINING ROOM • MODERN KITCHEN • UTILITY AREA • BATHROOM & SEPARATE W/C • LARGE WRAP-AROUND GARDEN • CLOSE TO AMENITIES • FREEHOLD • EPC RATING - C

KINGS

Sales Lettings Management



Situated near to many local amenities including Birchwood School and Nursery, Countess Anne Primary School, Hatfield train station and the shops of Old Hatfield and the Town Centre is this recently refurbished two bedroom end terrace house. The ground floor comprises an entrance hall with storage cupboard, spacious dual aspect living/dining room also with under stair storage space, modern kitchen with breakfast bar area and utility area. The first floor features a double bedroom with built in storage, second double bedroom, family bathroom and separate W/C. This home further benefits from a front garden with external storage cupboard, private wrap-around rear and side gardens with side access.

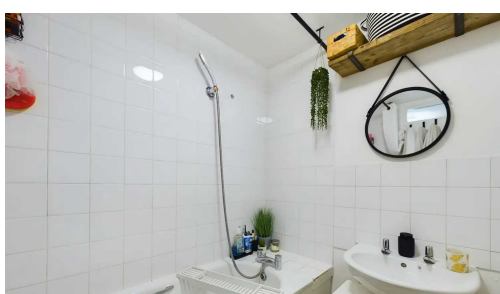
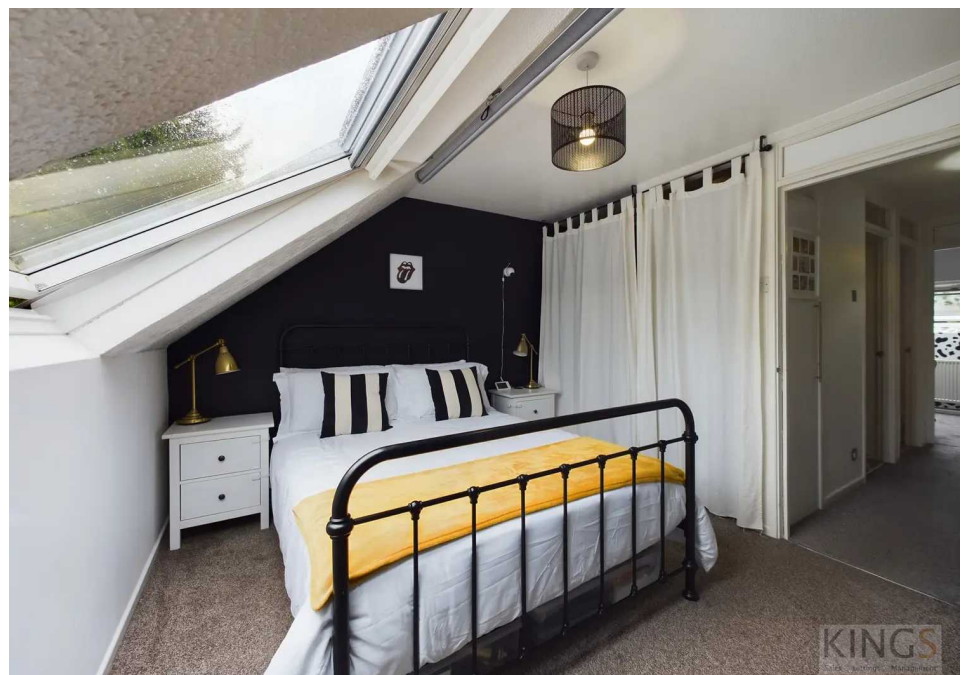


Council Tax band: C

Tenure: Freehold

EPC Energy Efficiency
Rating: C

EPC Environmental Impact
Rating: D





Ground Floor

Approximate total area⁽¹⁾
812.57 ft²
75.49 m²

Reduced headroom
46.06 ft²
4.28 m²



Floor 1

(1) Excluding balconies and terraces

Reduced headroom
(below 1.5m/4.92ft)

While every attempt has been made to ensure accuracy, all measurements are approximate, not to scale. This floor plan is for illustrative purposes only.

GIRAFFE360

