



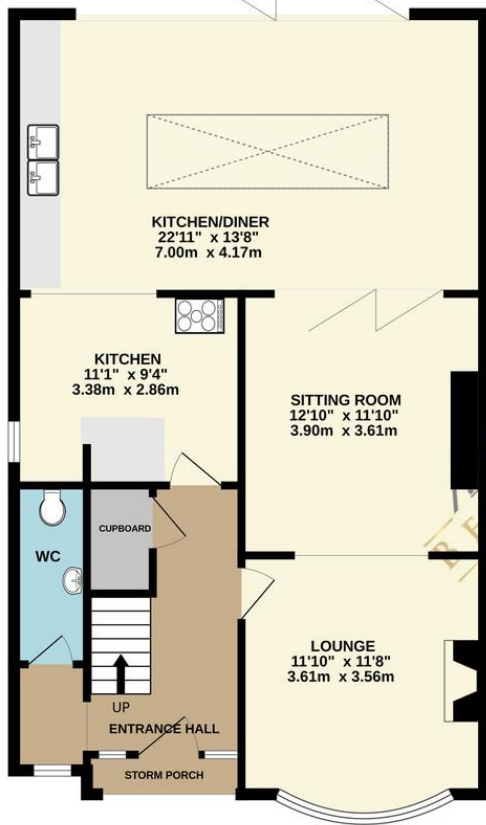
111 Nursery Road | North Anston | Sheffield | S25 4BT

£325,000

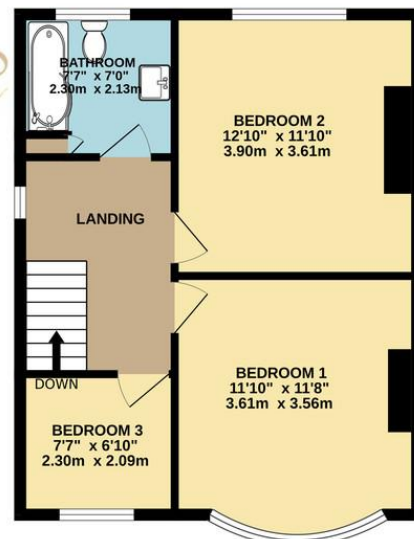
Bell & Co Estates are delighted to present this stunning Three Bedroom Semi-Detached home in the popular village location of North Anston. In brief the property comprises of; a welcoming and spacious Entrance Hallway with a modern downstairs WC, door allowing access to the front facing study which could be used as a play room or separate snug, flowing into the Lounge area which is a lovely cosy space with bifold doors allow access into the open plan modern Kitchen Diner with modern units and integrated appliances and bifolds opening up onto the garden. Access here takes you back to the hallway and to the upstairs is a modern Family Bathroom with shower over bath, sink and WC. Three good sized Bedrooms; the master bedroom benefits from a lovely bay window, the second bedroom is of great size and has a pull down ladder allowing access to the loft space currently used as a play room with storage, and the third Bedroom currently being used as a Dressing Room. To the outside the driveway provides off road parking on the paved and gravelled driveway for multiple vehicles. To the rear, a large enclosed garden provides more than enough space for the family and entertaining with outbuildings for storage. This home is simply stunning and is a must see.



GROUND FLOOR
863 sq.ft. (80.2 sq.m.) approx.



1ST FLOOR
470 sq.ft. (43.7 sq.m.) approx.



Contact Details

79 Wales Road
Kiveton Park
Sheffield
South Yorkshire
S26 6RA

www.bellcoestates.com

03333 580590

111 Nursery Road
North Anston
SHEFFIELD
S25 4BT

Energy rating

D

Valid until

10 April 2034

Certificate number

9394-3036-7204-7194-8204

Property type

Semi-detached house

Total floor area

126 square metres

Agents Note: Whilst every care has been taken to prepare these sales particulars, they are for guidance purposes only. All measurements are approximate and for general guidance purposes only and whilst every care has been taken to ensure their accuracy, they should not be relied upon and potential buyers are advised to recheck the measurements