



2 Bedroom Ground Floor Apartment £145,000

Phoenix Gardens, Swindon, Wiltshire, SN25 2LQ

**mcfarlane**  
property.com

## 2 Bedroom Ground Floor Apartment North Swindon

---

- NO ONWARD CHAIN
  - Ground floor apartment
  - Two bedrooms
  - Living room
- 

A great GROUND FLOOR APARTMENT, with TWO BEDROOMS, living dining room and SEPERATE KITCHEN as well as family bathroom and ALLOCATED PARKIG SPACE, available with NO ONWARD CHAIN and a perfect first time purchase, investment or lock up and go.

Lease Term Remaining 105 years  
Service charges TBC  
Council Tax Band Band C  
Council Tax Estimate £1,954



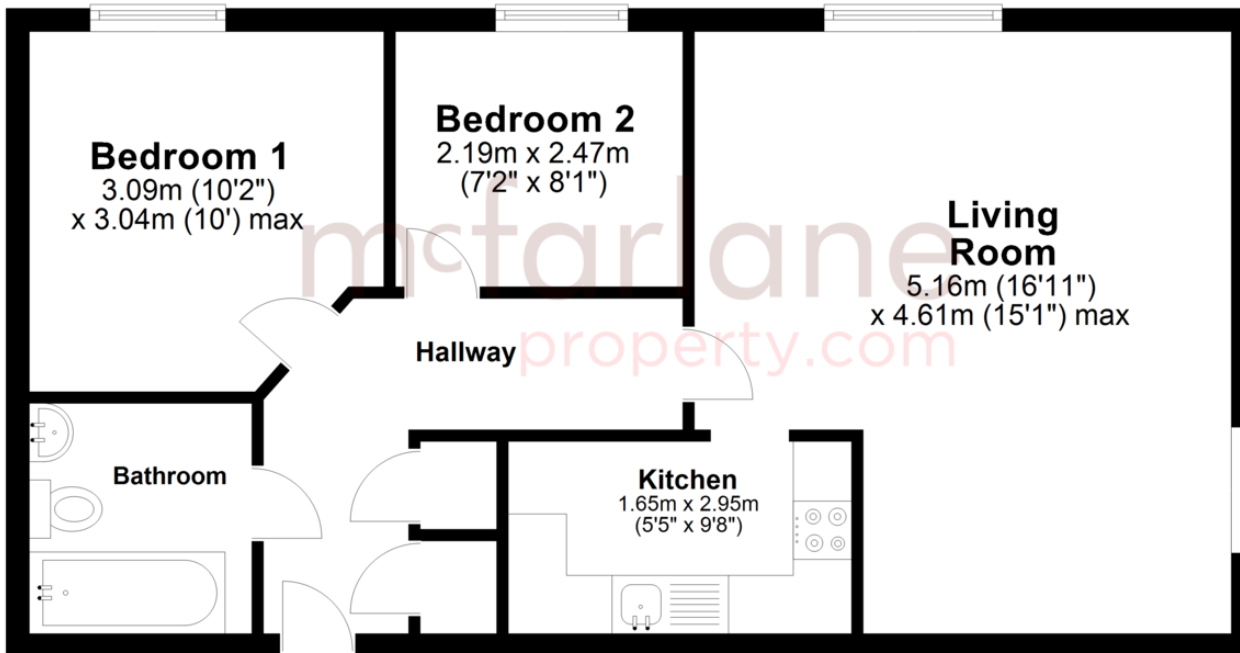




We   
where you  
**LIVE**

## Ground Floor

Approx. 53.3 sq. metres (573.6 sq. feet)




Total area: approx. 53.3 sq. metres (573.6 sq. feet)

Our team are friendly, experienced and are all local. They know it better than they do their own living rooms and can help you find what you're looking for because **we love where we live.**

We would be delighted to show you around this property.

**Because every home  
needs a personal touch.**

**If you would like to view this  
property then please get in touch.**

 01793 296600

 [swindon@mcfarlaneproperty.com](mailto:swindon@mcfarlaneproperty.com)

[mcfarlaneproperty.com](http://mcfarlaneproperty.com)

**mcfarlane**  
property.com

### **Cricklade.**

102 High Street  
Cricklade SN6 6AA

 01793 751044

### **Marlborough.**

106 High Street  
Marlborough SN8 1LT

 01672 514380

### **Old Town.**

28-30 Wood Street  
Swindon SN1 4AB

 01793 296880

### **Swindon.**

The Village Centre,  
Redhouse SN25 2FW

 01793 296600

Agents Note: Whilst every care has been taken to prepare these sales particulars, they are for guidance purposes only. All measurements are approximate are for general guidance purposes only and whilst every care has been taken to ensure their accuracy, they should not be relied upon and potential buyers are advised to recheck the measurements