



BRECKENRIDGE LETTINGS



Magna Carta Park, Englefield Green, Surrey TW20



A truly stunning brand new fully furnished two bedroom apartment located in the exclusive Magna Carta Park development. A unique property that includes bespoke concierge, numerous health and well being facilities and access to the Coopers Hill restaurant.

Available - Immediately

£7950 Per Calendar Month

Fully Furnished



BRECKENRIDGE LETTINGS

- Two Bedrooms
- Two Bathrooms
- Fully Furnished
- Bespoke Concierge
- Health and Well Being Facilities
- Access to Coopers Hill Restaurant





Energy Efficiency Rating		Environmental Impact (CO ₂) Rating			
	Current	Potential		Current	Potential
Very energy efficient - lower running costs			Very environmentally friendly - lower CO ₂ emissions		
(92-100) A			(90-100) A		
(81-91) B	89	89	(81-91) B		
(69-80) C			(69-80) C		
(55-68) D			(55-68) D		
(39-54) E			(39-54) E		
(21-38) F			(21-38) F		
(1-20) G			(1-20) G		
Not energy efficient - higher running costs			Not environmentally friendly - higher CO ₂ emissions		
EU Directive 2002/91/EC			EU Directive 2002/91/EC		

All viewings are strictly by appointment or by e-mail.

Please be advised that any information supplied by the agent is given without any warranty and all negotiations are on a subject to contract basis until a tenancy agreement has been engrossed. Satisfactory references are always required before a tenancy agreement is signed. In addition to the rental and security deposit there is a charge for the tenancy agreement and an Inventory/Check-in procedure.

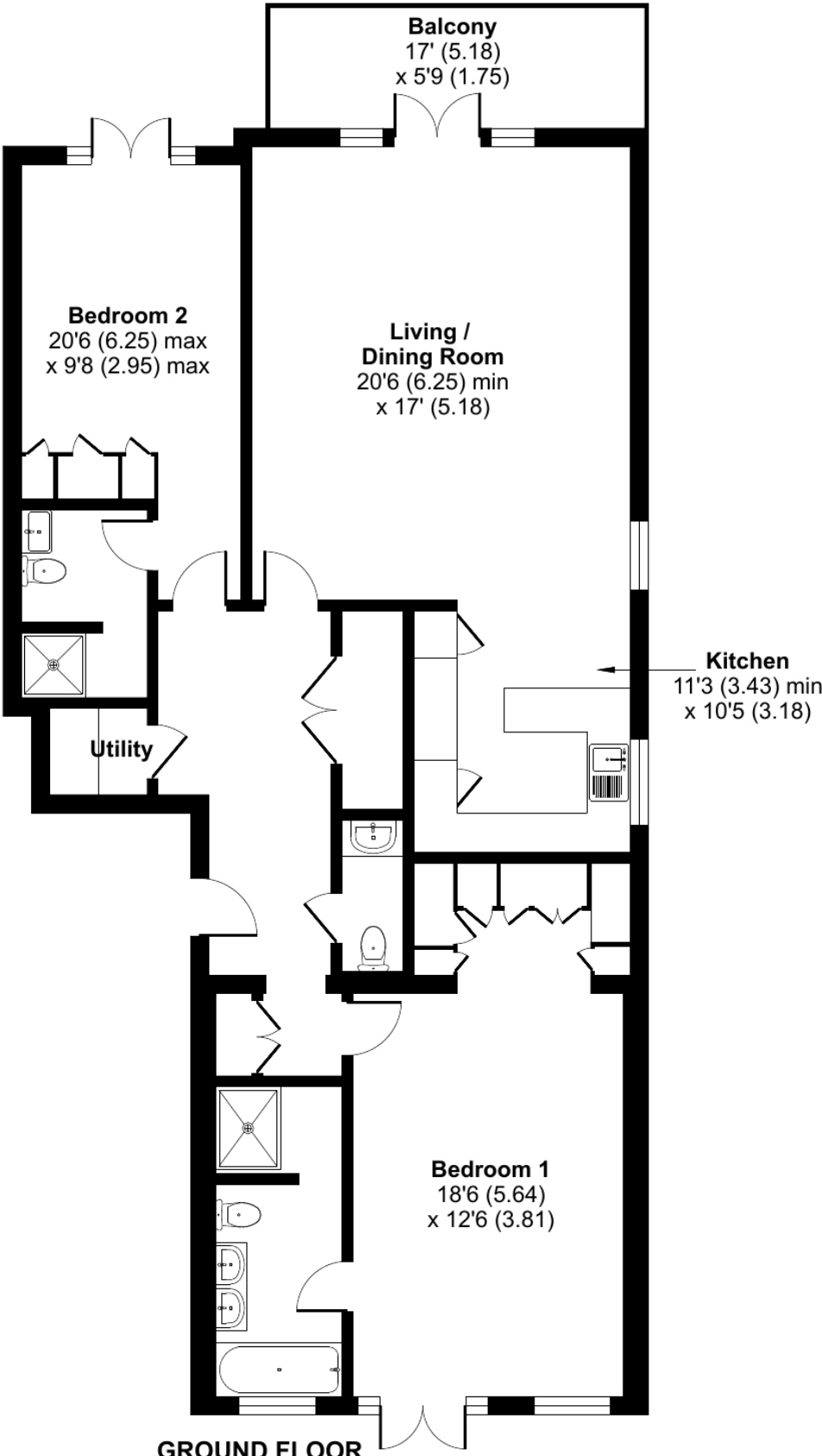
These particulars or any other media, printed or downloaded, do not form part of any contract and must not be relied upon. All measurements mentioned within the particulars are approximate and are given as a guide only.

Email: contact.us@breckenridge-lettings.co.uk

King John Square, Englefield Green, Egham, TW20

Approximate Area = 1360 sq ft / 126.3 sq m

For identification only - Not to scale



Floor plan produced in accordance with RICS Property Measurement Standards incorporating International Property Measurement Standards (IPMS2 Residential). © nichecom 2024. Produced for Breckenridge Lettings Ltd. REF: 1103292