



Josephs Way, New Romney

New Romney

£310,000

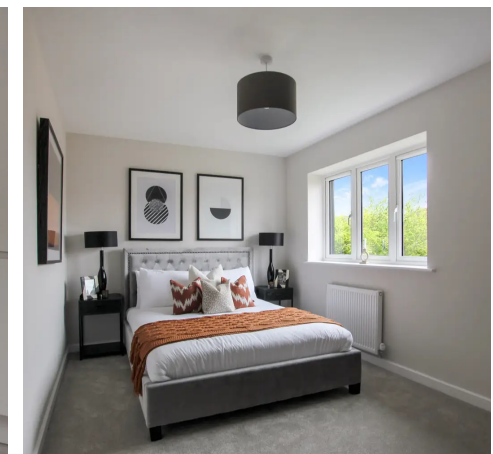
44 Josephs Way

, New Romney

This stunning Chain-Free New Build offers modern living with traditional charm. Features a spacious two bed detached house with high-end finishes, chef's kitchen, double bedrooms, large garden, and off-street parking. A blend of luxury and practicality near town centre.

Tenure: Freehold

- Two Bedroom
- Spacious Home
- Fitted Kitchen
- Large Living Space
- Two Double Bedrooms
- Generous Garden
- Chain Free New Build
- Show Home open by Appointment





Entrance Hall

Living Room

18' 9" x 15' 9" (5.72m x 4.81m)

Kitchen

11' 9" x 7' 10" (3.57m x 2.39m)

Wc

Landing

Bedroom

15' 9" x 10' 2" (4.80m x 3.09m)

Bedroom

15' 9" x 9' 2" (4.80m x 2.80m)

Bathroom

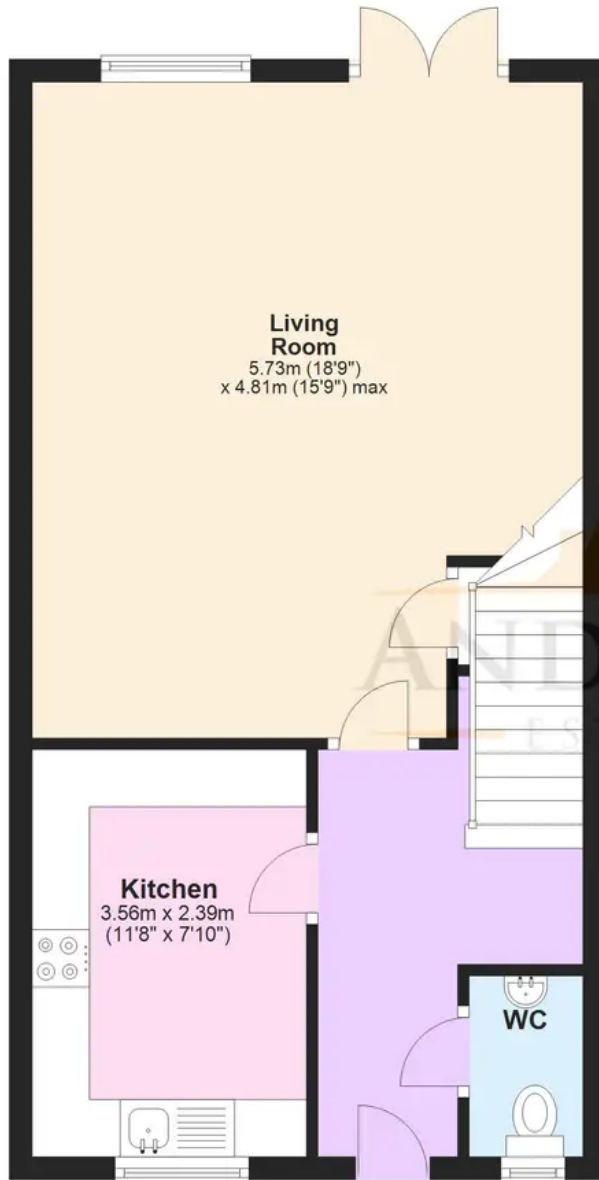
8' 6" x 7' 1" (2.60m x 2.17m)





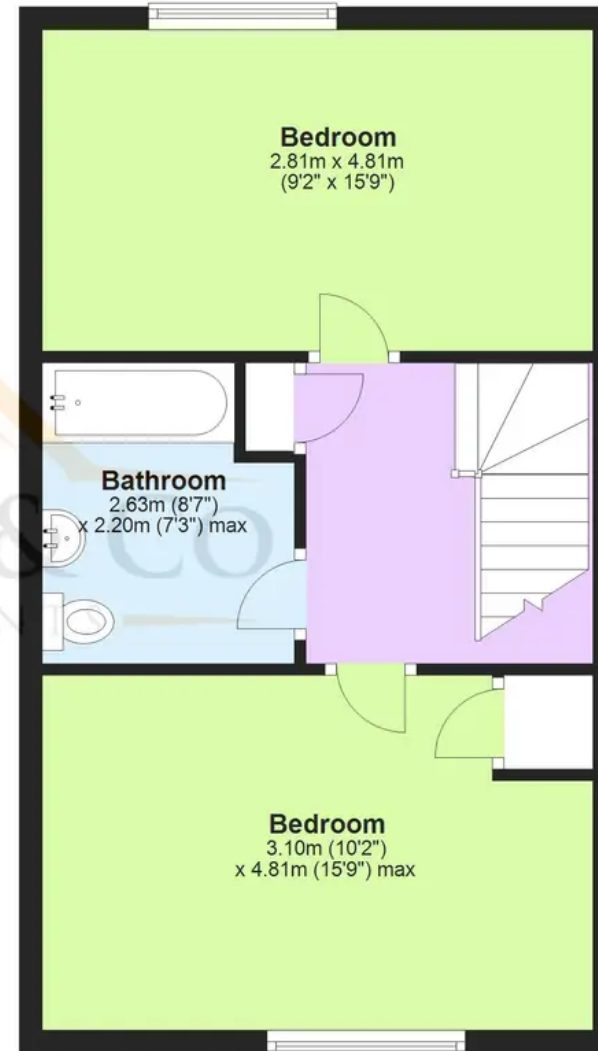
Ground Floor

Approx. 45.1 sq. metres (485.5 sq. feet)



First Floor

Approx. 42.0 sq. metres (452.0 sq. feet)



Total area: approx. 87.1 sq. metres (937.6 sq. feet)

Plans are for layout purposes only and not drawn to scale, with any doors, windows and other internal features merely intended as a guide.

Plan produced using PlanUp.

These particulars are intended to give a fair and reliable description of the property but no responsibility for any inaccuracy or error can be accepted and do not constitute an offer or contract. We have not tested any services or appliances (including central heating if fitted) referred to in these particulars and purchasers are advised to satisfy themselves as to the working order and condition, if a property is unoccupied at any time there may be reconnection charges for any switched off/disconnected or drained services or appliances. All measurements are approximate.



Andrew & Co Estate Agents - New Romney

01797 362898

newromney@andrewandco.co.uk

